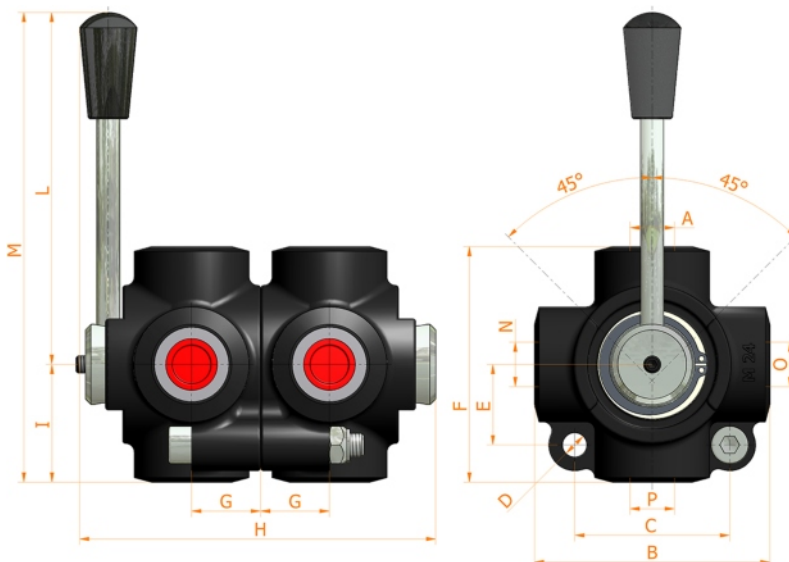
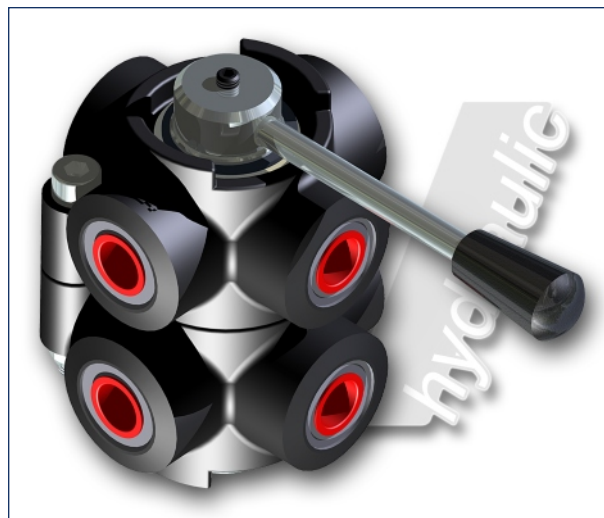
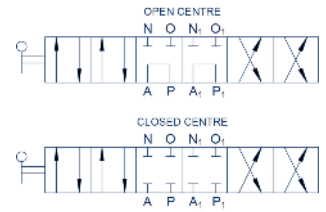


hydraulic diagram

# D8 SAE

8 ways flow inverter



**Specifications:**

- Iron cast body
- White zinc plated external parts
- Standard colour black

O-N-A SAE	FLOW liters/min	PRESSURE BAR	B mm	C mm	D mm	E mm	F mm	G mm	H mm	L mm	M mm	MASS KG	CODE OF OPEN CENTRE	CODE OF CLOSED CENTRE
3/4 - 16	60+60	350	80	54	8,5	28	80	24	124	115	155	2,300	7005.0200	7005.0207
7/8 - 14	90+90	350	80	54	8,5	28	80	24	124	115	155	2,100	7005.0201	7005.0208
1 1/16 - 12	120+120	350	94	74	10,5	38	94	31	152	115	162	4,300	7005.0202	7005.0209
1 5/16 - 12	200+200	300	94	74	10,5	38	94	31	152	115	162	4,000	7005.0203	7005.0210

**HV Hydraulic S.r.l.**

www.hvhydraulic.com - info@hvhydraulic.com  
Via dell'Agricoltura, 162 - Loc. Castelletto di Serravalle - 40053 Valsamoggia (BO) Italy - Tel. +39 051 670.50.11 - Fax +39 051 670.53.74

© ALL RIGHTS RESERVED