

# CETOP-03 SIZE MODULAR CHECK VALVE



## Characteristics

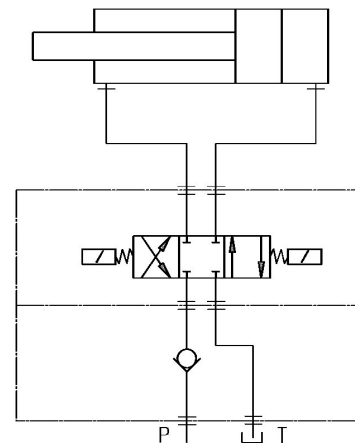
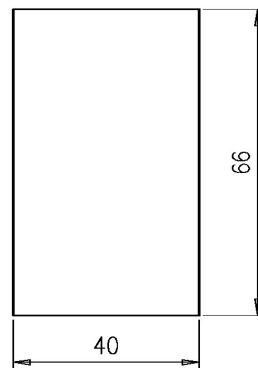
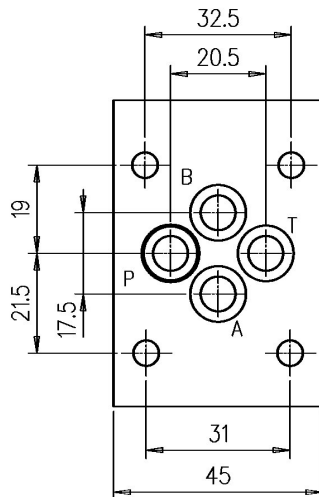
TYPE	FLOW	PRESSURE	WEIGHT
IRM-03/*	24 l/min.	350 bar	1 Kg.

**Description** Cetop-03 size modular check valves either on P or on T port.

## Dimensions

### Type IRM-03/P N°4 OR-108

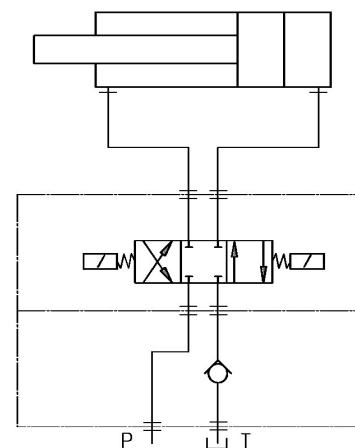
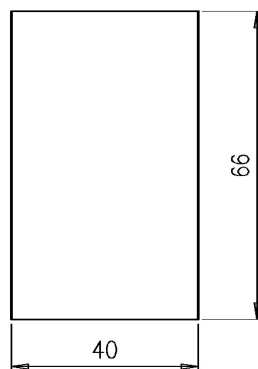
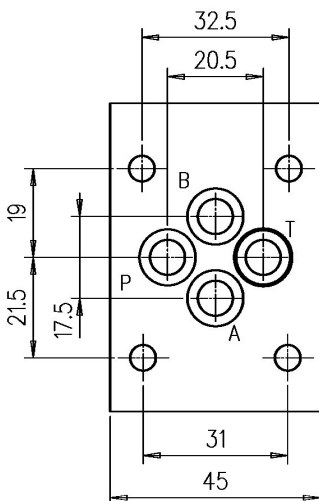
## Symbol



## Dimensions

### Type IRM-03/T N°4 OR-108

## Symbol



## Installation rules

- The valves type IRM can be mounted in any position
- Fluid to be used: hydraulic oil in compliance with DIN 51524 rules, viscosity between 30 and 100 mm<sup>2</sup>/s (cSt) at 40°C
- Recommended filtration of 25μ
- Hydraulic fluid temperature: from -20° to +75°C

## Ordering code

IRM-03 / \*

P=check on P port

T=check on T port

CETOP 03 size modular check valve