

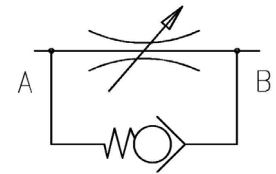
# ONE-WAY, SLEEVE, FLOW REGULATION VALVE



## Characteristics

## Symbol

TYPE	MAX FLOW	MAX PRESSURE
VSR-14	12 l/min.	350 bar
VSR-38	30 l/min.	350 bar
VSR-12	45 l/min.	350 bar
VSR-34	85 l/min.	350 bar

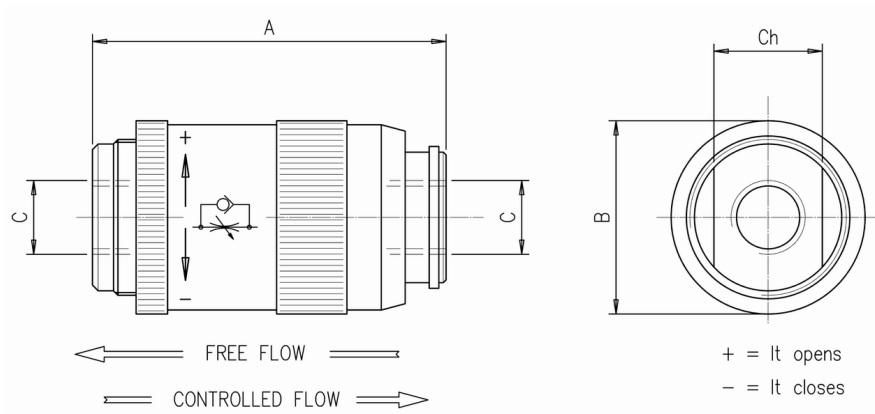


## Description

VSR valves are non-compensated flow regulators with built-in check valve. They allow the flow control in one direction and free flow in the opposite one.

The flow adjustment is achieved by rotating the sleeve body. The adjusted flow depends on the pressure difference between the in and out ports.

## Dimensions



Mod.	A	B	C (Bsp)	Ch.
VSR-14	62	34	1/4"	19
VSR-38	72	40	3/8"	24
VSR-12	80	46	1/2"	30
VSR-34	100	54	3/4"	36

## Installation rules

- The valves type VSR can be mounted in any position
- Fluid to be used: hydraulic oil in compliance with DIN 51524 rules, viscosity between 30 and 100 mm<sup>2</sup>/s (cSt) at 40°C
- Recommended filtration: 25μ
- Hydraulic fluid temperature: from -20° to +75°C

## Ordering code

VSR - \*\*

14 = 1/4" BSP 38 = 3/8" BSP 12 = 1/2" BSP 34 = 3/4" BSP  
 One-way flow regulator