

SERIE 3VMR - 3VMR SERIES

COME ORDINARE - HOW TO ORDER

3V	M	Cilindrata Size	Rotazione Rotation	Bocche Ports	Albero Shaft	Flangia Flange	Pos. bocche Port position	Guarnizioni Seals	Opzioni Options	Drenaggio Drain
Serie Series	Pompa Pump	22	R Revers.le Reversible	F.	T0	B1	-	-	-	Q1
		26		E.	T1	B2	C	V		Q2
		29		L0/L4 L5,L6	C2	A0	R	H		Q0
		33		U.	C3			T		
		36			S0			N		
		42			S1					
		46								
		50								
		55								
		63								

Posizione bocche - Port position

- Laterale / Side
- R Posteriore / Rear

Guarnizioni - Seals

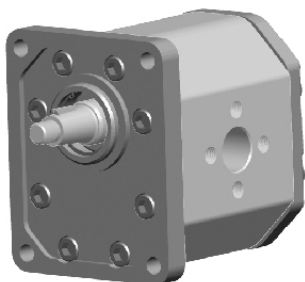
- Buna (-10°C + 80°C) - Max pressione in Aspirazione 3 bar assoluti / Inlet pressure up to 3 bar absolute
- V Viton (-10°C + 120°C) - Max pressione in Aspirazione 3 bar assoluti / Inlet pressure up to 3 bar absolute
- H Silicon (-40°C + 80°C) - Max pressione in Aspirazione 3 bar assoluti / Inlet pressure up to 3 bar absolute
- T Buna (-10°C + 80°C) - Max pressione in Aspirazione 6 bar assoluti / Inlet pressure up to 6 bar absolute
- N Buna (-10°C + 80°C) - Max pressione in Aspirazione 10 bar assoluti / Inlet pressure up to 10 bar absolute

Opzioni - Options

Drenaggio - Drain

- Q1 Drenaggio esterno / External drain 3/8 BSPP
- Q2 Drenaggio esterno / External drain 9/16 - 18 UNF
- Q0 Drenaggio interno / Internal drain

3VM..R - E. T0 B1-Q1



Profondità 19mm filetto M10

M10 thread depth 19mm

Flangia anteriore e coperchio posteriore in ghisa

Cast iron front flange and back cover

Assemblaggio con 8 tiranti da M10 coppia di serraggio 80 Nm

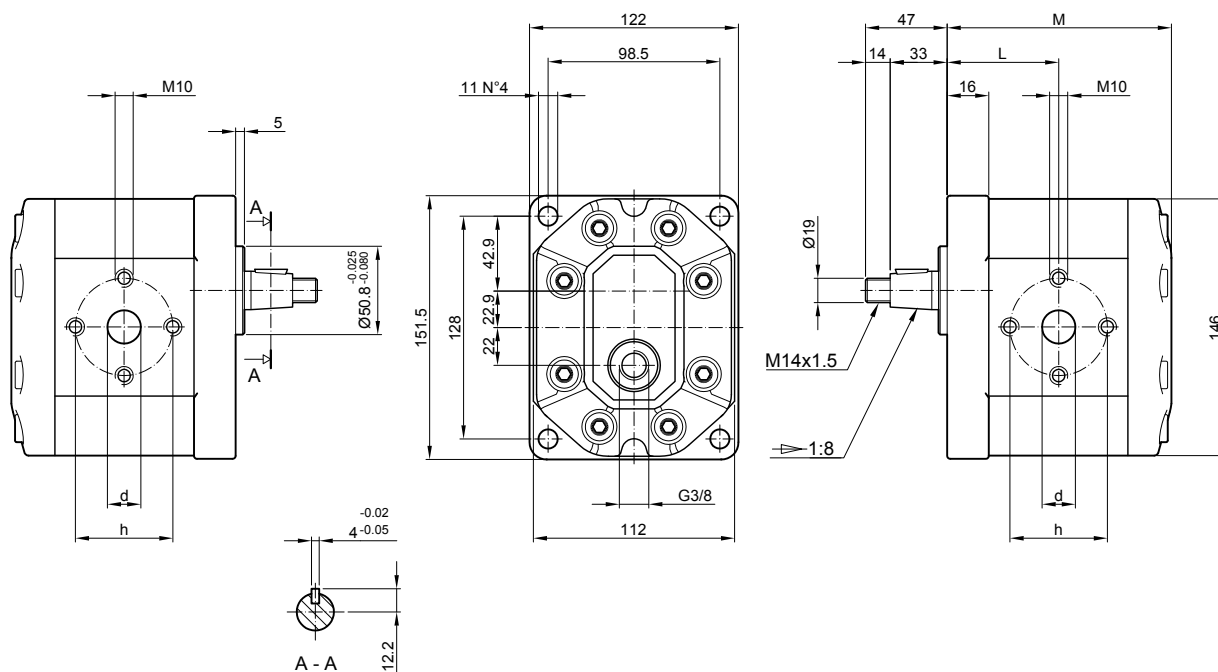
To mount the pump n.8xM10 screws with a torque wrench settings fixed at 80 Nm

Drenaggio 3/8 BSPP profondità utile 15mm

3/8 BSPP drain port thread depth 15mm

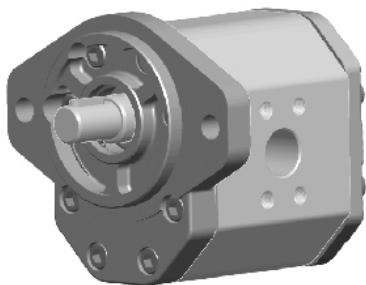
**MANDATA
OUTLET**

**ASPIRAZIONE
INLET**



Tipo Type	Cilindrata Displacement cm ³ /giro (cm ³ /rev)	Velocità minima Min. speed giri/min (rpm)	Pressioni massime Max pressure			Velocità Massima Max speed giri/min (rpm)	Dimensioni Dimensions			
			Pe bar	Pc bar	Pp bar		L mm	M mm	d mm	h mm
3VM 22 R	22	600	230	220	250	3500	64	130	27	56
3VM 26 R	26	600	230	220	250	3000	65	133	27	56
3VM 29 R	29	600	230	220	250	3000	66	135	27	56
3VM 33 R	33	500	230	220	250	3000	68	139	27	56
3VM 36 R	36	500	220	210	240	3000	70	142	27	56
3VM 42 R	42	500	210	200	230	2800	73	149	27	51
3VM 46 R	46	500	210	200	230	2800	75	152	27	51
3VM 50 R	50	500	200	190	215	2500	77	156	27	56
3VM 55 R	55	400	200	190	215	2500	79	160	33	62
3VM 63 R	63	400	190	180	205	2500	83	168	33	62

3VM..R - F. C2 A0-Q2



Profondità 19 filetto 3/8-16 UNC

3/8-16 UNC thread depth 19

Assemblaggio con 8 tiranti da M10 coppia di serraggio 47±3 Nm

To mount the pump n.8 M10 screws, with a torque wrench settings fixed at 47±3 Nm

Flangia anteriore e coperchio posteriore in ghisa

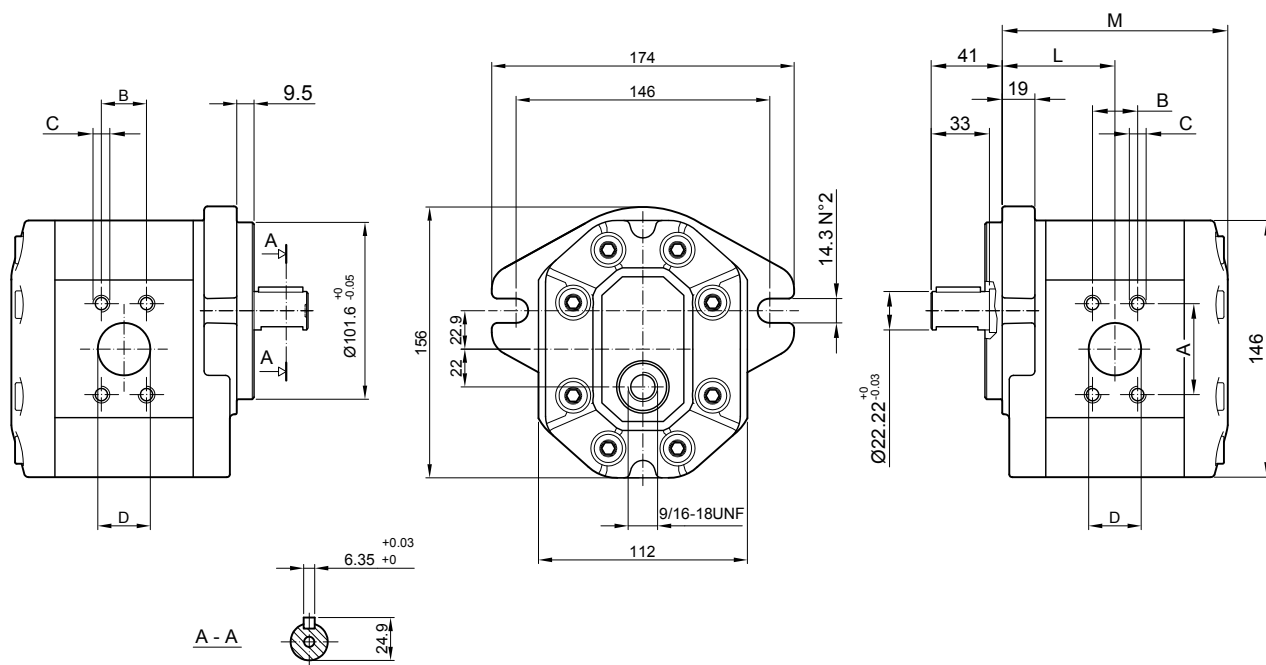
Cast iron front flange and back cover

Drenaggio G3/8 profondità utile 15 mm

G3/8 drain port thread depth 15 mm

MANDATA
OUTLET

ASPIRAZIONE
INLET

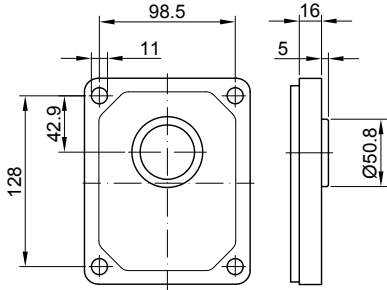


Tipo Type	Cilindrata Displacement	Velocità minima Min. speed	Pressioni massime Max pressure			Velocità Massima Max speed	Dimensioni Dimensions					
			Pe	Pc	Pp		L	M	B	A	C	D
	cm ³ /giro (cm ³ /rev)	giri/min (rpm)	bar	bar	bar	giri/min (rpm)	mm	mm	mm	mm	UNC	mm
3VM 22 R	22	600	230	220	250	3500	64	130	22,20	47,60	3/8	19
3VM 26 R	26	600	230	220	250	3000	65	133	22,20	47,60	3/8	19
3VM 29 R	29	600	230	220	250	3000	66	135	22,20	47,60	3/8	19
3VM 33 R	33	500	230	220	250	3000	68	139	22,20	47,60	3/8	19
3VM 36 R	36	500	220	210	240	3000	70	142	22,20	47,60	3/8	19
3VM 42 R	42	500	210	200	230	2800	73	149	22,20	47,60	3/8	19
3VM 46 R	46	500	210	200	230	2800	75	152	22,20	47,60	3/8	19
3VM 50 R	50	500	200	190	215	2500	77	156	22,20	47,60	3/8	19
3VM 55 R	55	400	200	190	215	2500	79	160	26,20	52,40	3/8	27
3VM 63 R	63	400	190	180	205	2500	83	168	26,20	52,40	3/8	27

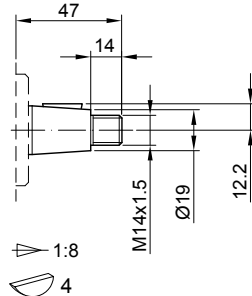
SERIE 3VM..R - 3VM..R SERIES

FLANGE / FRONT COVERS

ALBERI / SHAFTS

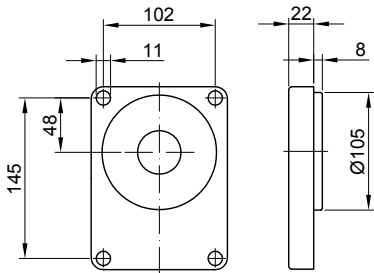


B1

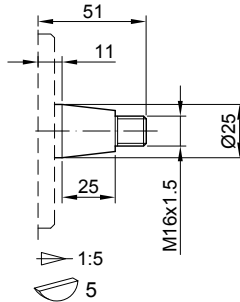


T0

Coppia max 300 Nm
Max. torque 300 Nm

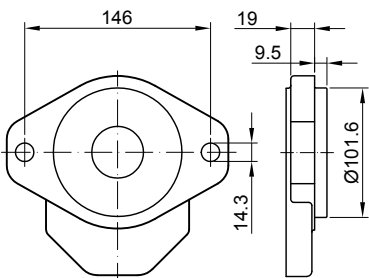


B2

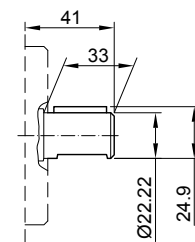


T1

Coppia max 350 Nm
Max. torque 350 Nm

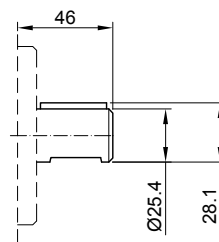


A0



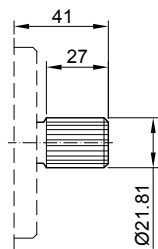
C2

Coppia max 400 Nm
Max. torque 400 Nm



C3

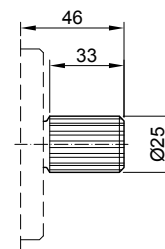
Coppia max 450 Nm
Max. torque 450 Nm



DP16/32-30° - 13T

S0

Coppia max 500 Nm
Max. torque 500 Nm



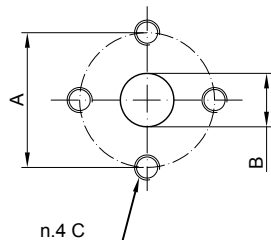
DP16/32-30° - 15T

S1

Coppia max 600 Nm
Max. torque 600 Nm

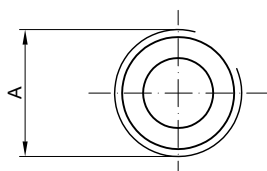
SERIE 3VM..R - 3VM..R SERIES

BOCCHE / PORTS



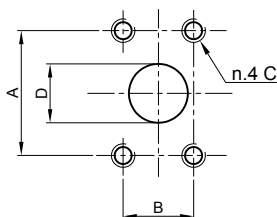
E1/E2/E3

Tipo Type	Codice bocca Ports code	Motore Bidirezionale Bi-directional Motor					
		A	B	C			
3VM 22 ÷ 36	E2	56	27	M10			
3VM 42 ÷ 46	E1	51	27	M10			
3VM 50	E2	56	27	M10			
3VM 55 ÷ 63	E3	62	33	M10			



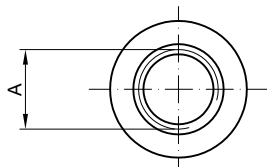
L0/L4/L5

Tipo Type	Codice bocca Ports code	Motore Bidirezionale Bi-directional Motor					
		A					
3VM 22	L0	G 3/4					
3VM 26 ÷ 42	L4	G 1					
3VM 46 ÷ 63	L5	G 1 1/4					



F.

Tipo Type	Codice bocca Ports code	Motore Bidirezionale Bi-directional Motor						
		A	B	C	D			
3VM 22 ÷ 50	F.	47.6	22.2	3/8 - 16UNC	19			
3VM 55 ÷ 63	F.	52.4	26.2	3/8 - 16UNC	27			

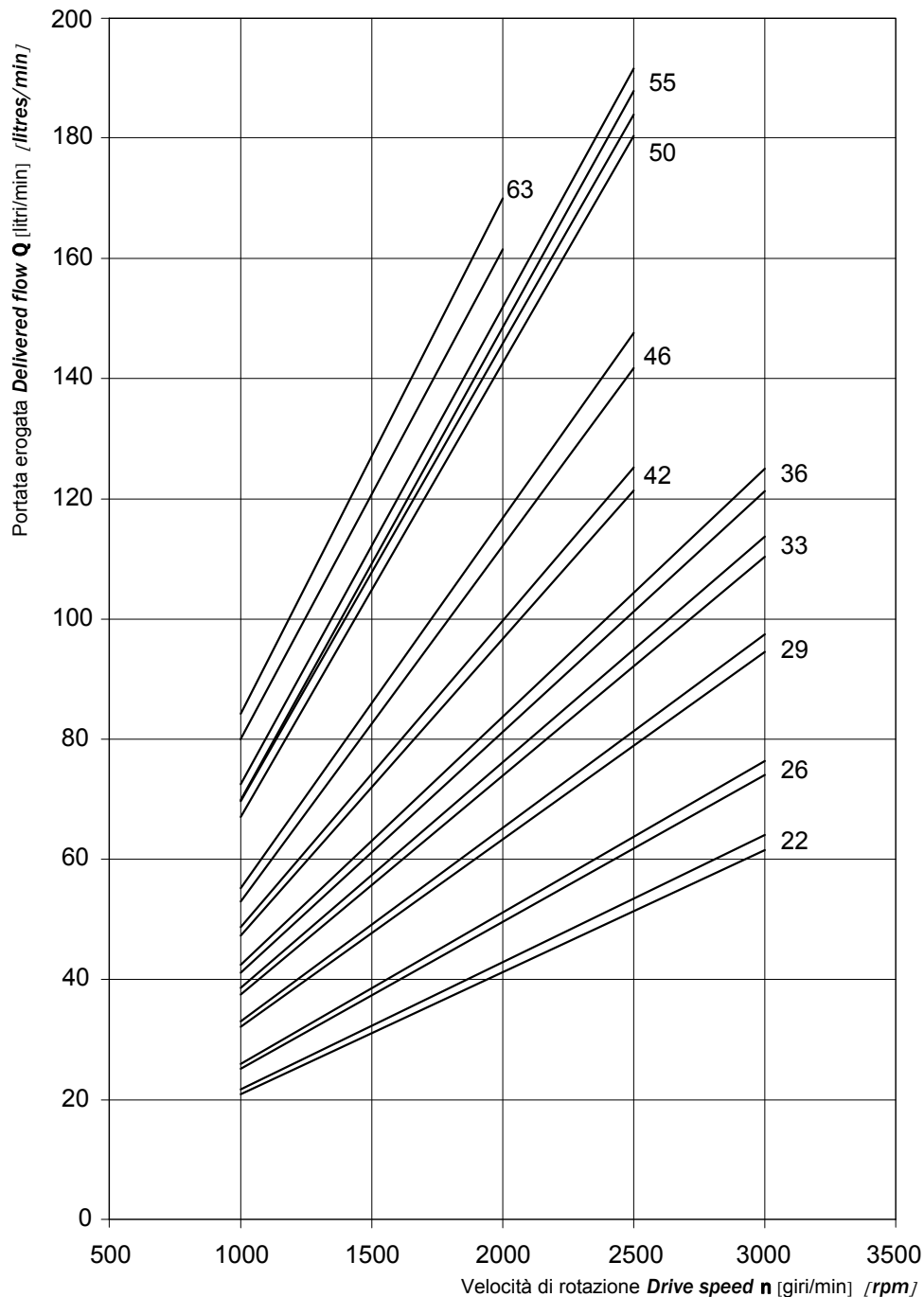


U.

Tipo Type	Codice bocca Ports code	Motore Bidirezionale Bi-directional Motor					
		A					
3VM 22 ÷ 36	U.	1 1/16 - 12UNF					
3VM 42 ÷ 50	U.	1 1/16 - 12UNF					
3VM 55 ÷ 63	U.	1 5/16 - 12UNF					

SERIE 3VM - 3VM SERIES

3VM CURVE CARATTERISTICHE / 3VM PERFORMANCE CURVES



Le curve sono state ottenute alla temperatura di 50°C, utilizzando olio con viscosità 30 cSt alle pressioni sotto riportate.

Each curve has been obtained at 50°C, using oil with viscosity 30 cSt at these pressure.

22 | 25-250 bar
26 |

42 | 25-220 bar

50 | 25-180 bar

29 | 25-240 bar
33 |
36 |

46 | 25-200 bar

55 | 25-170 bar

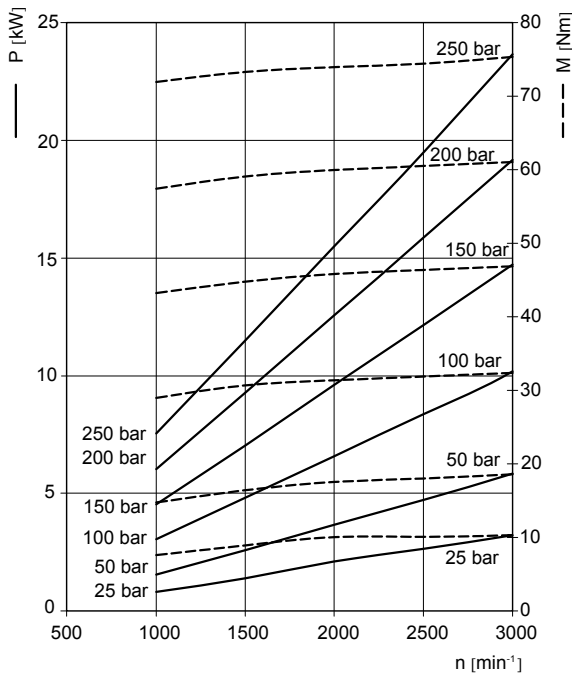
63 | 25-150 bar

SERIE 3VM - 3VM SERIES

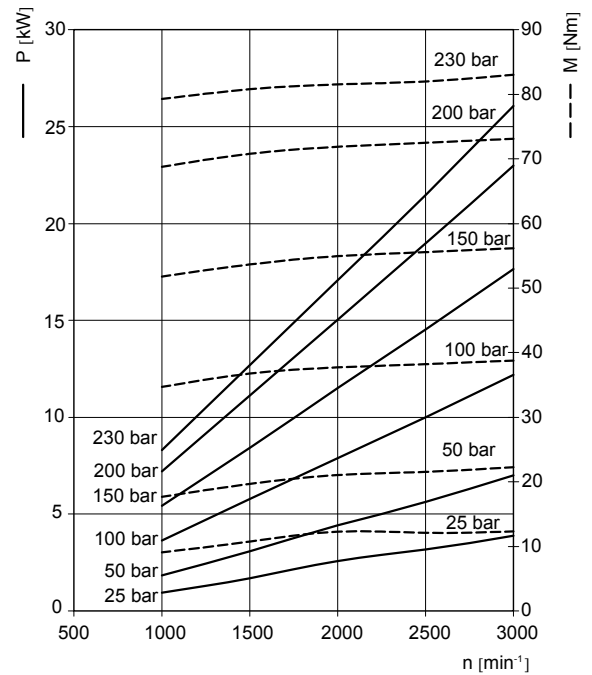
CURVE CARATTERISTICHE / PERFORMANCE CURVES

Potenza erogata - *Delivered power* P [kW]
 Momento torcente erogato - *Delivered torque* M [Nm]
 Velocità di rotazione - *Drive speed* n [giri/min] [rpm]

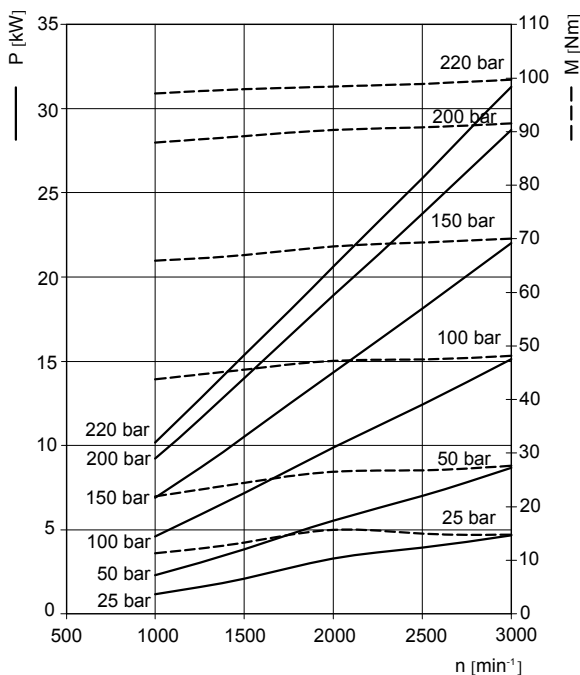
3VM 22



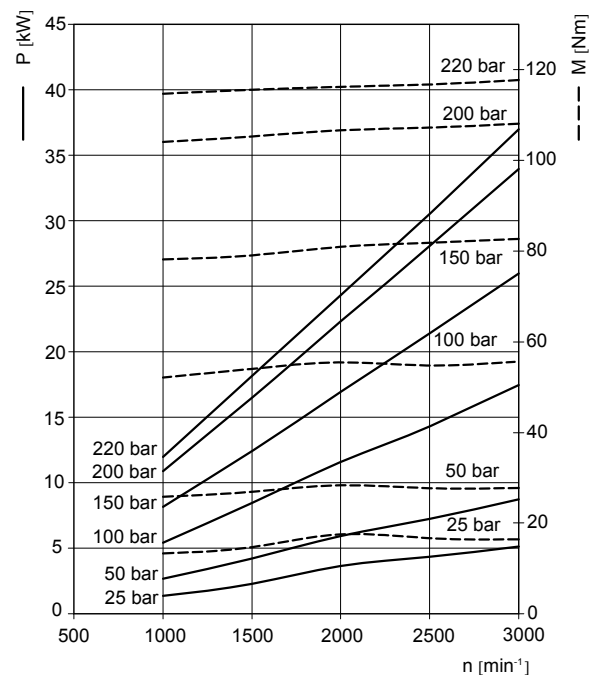
3VM 26



3VM 29



3VM 33

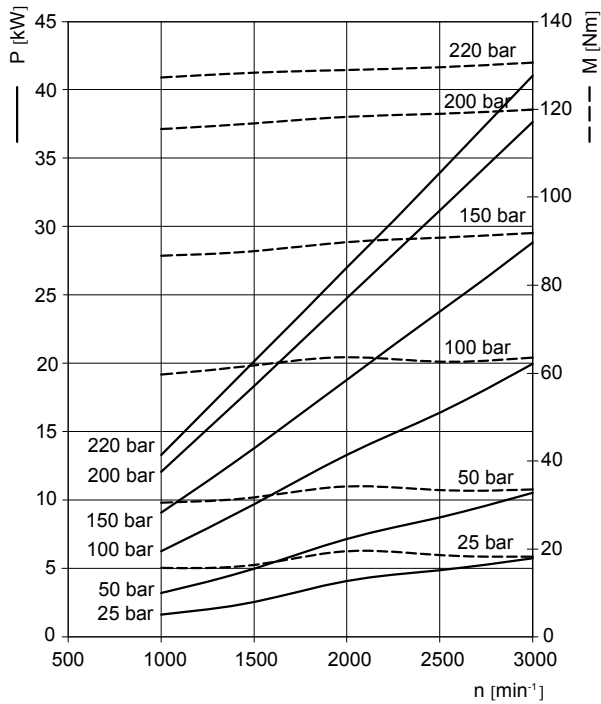


SERIE 3VM - 3VM SERIES

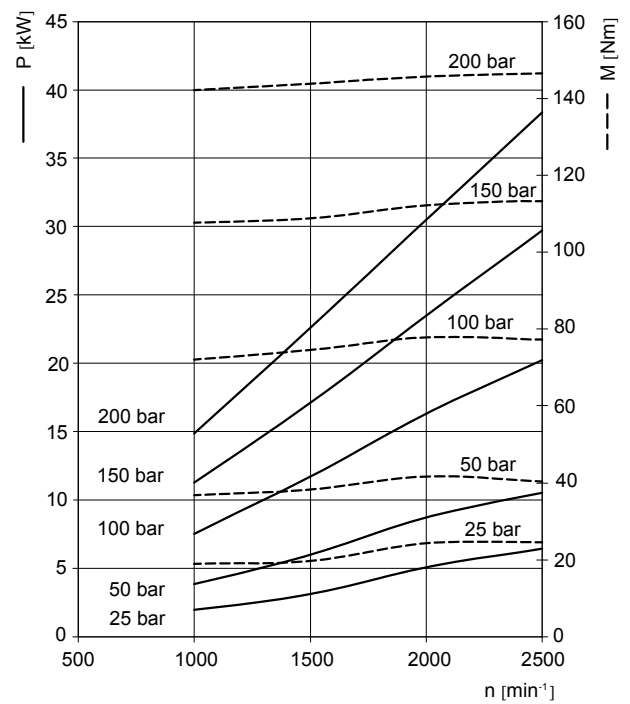
CURVE CARATTERISTICHE / PERFORMANCE CURVES

Potenza erogata - *Delivered power P* [kW]
 Momento torcente erogato - *Delivered torque M* [Nm]
 Velocità di rotazione - *Drive speed n* [giri/min] [rpm]

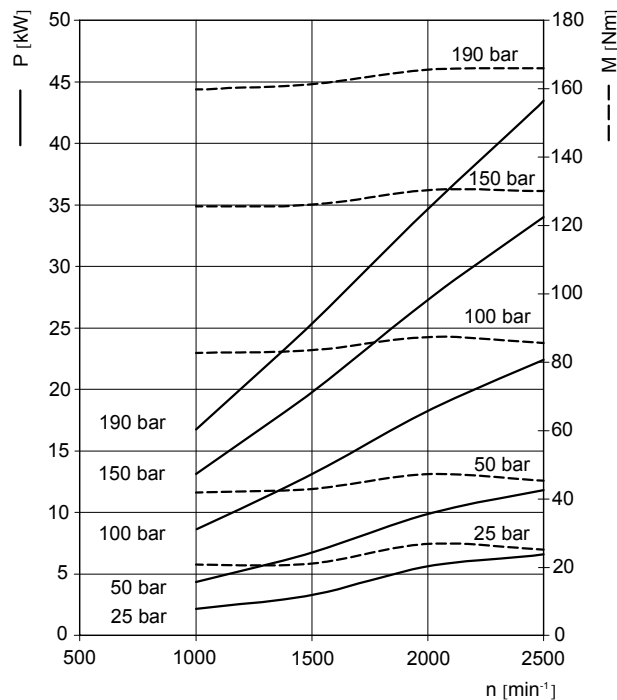
3VM 36



3VM 42



3VM 46

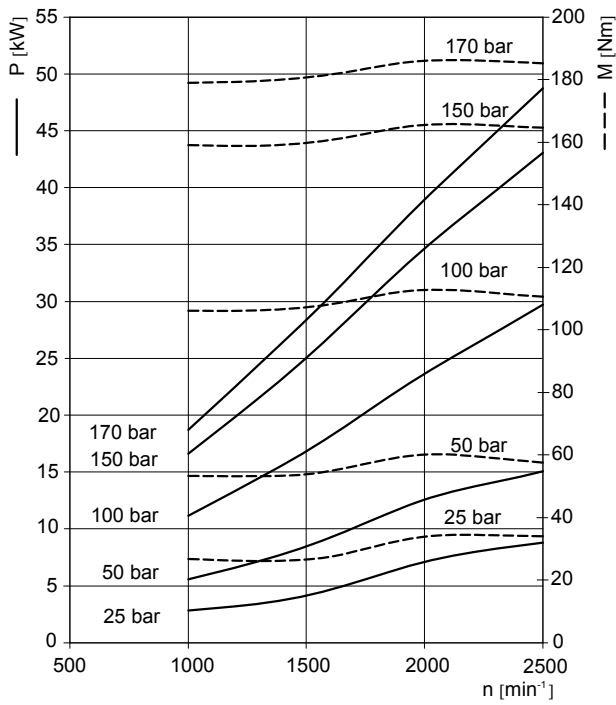


SERIE 3VM - 3VM SERIES

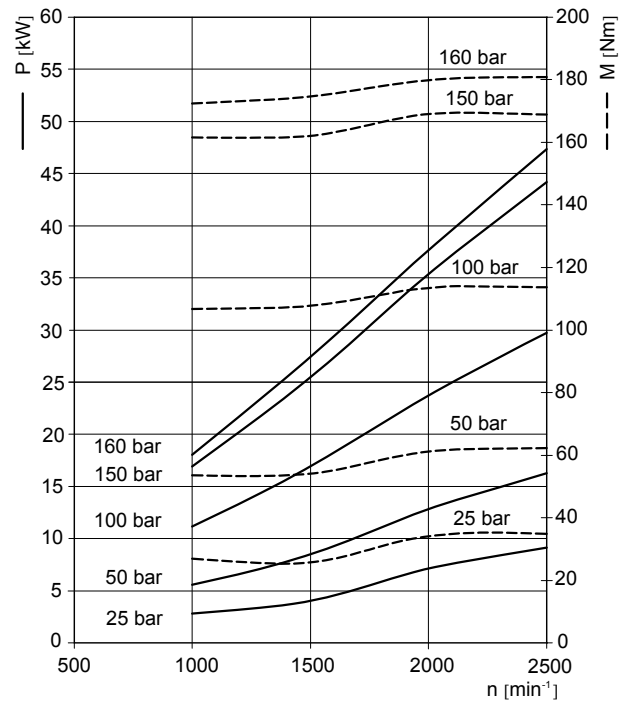
CURVE CARATTERISTICHE / PERFORMANCE CURVES

Potenza erogata - *Delivered power P* [kW]
 Momento torcente erogato - *Delivered torque M* [Nm]
 Velocità di rotazione - *Drive speed n* [giri/min] [rpm]

3VM 50



3VM 55



3VM 63

