

# reversible pump - series XV

**XV-OR**

HY TYPE PUMP

Ø22 BODY-SHAPED FLANGE - MILLED SHANK

**X 0 R 06 21 B B B E**

|              |     |                                 |
|--------------|-----|---------------------------------|
| Series       | X   | series XV                       |
| Group        | 0   | group 0                         |
| Category     | R   | reversible pump                 |
| Displacement | 06  | 0.76                            |
| Flange       | 21  | Ø22 HY reversible rotation      |
| Shaft        | B   | CF001 - Milled shank ø7 - thk.5 |
| Body         | IN  | inlet - 1/4" GAS                |
|              | OUT | outlet - 1/4" GAS               |
| Cover        | E   | reversible w/external drainage  |



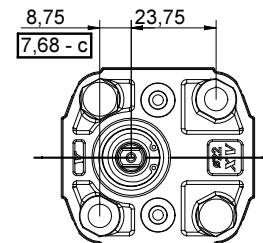
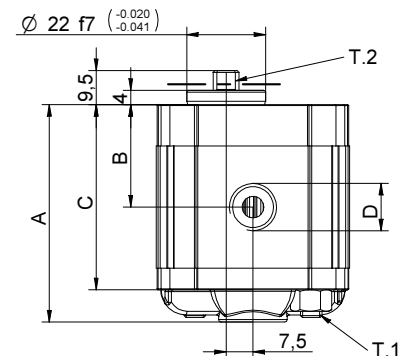
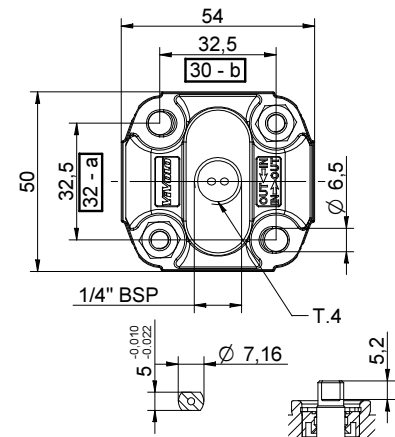
**XR017**

Technical data table

| TYPE       | Displacement<br>cm3/rev | Max. Pressure |        | CODE                |                     |
|------------|-------------------------|---------------|--------|---------------------|---------------------|
|            |                         | P1 bar        | P3 bar | External drainage   | Internal drainage   |
| XV-OR/0.17 | 0,16                    | 220           | 260    | X 0 R 01 21 B B B E | X 0 R 01 21 B B B F |
| XV-OR/0.25 | 0,24                    | 220           | 260    | X 0 R 02 21 B B B E | X 0 R 02 21 B B B F |
| XV-OR/0.45 | 0,45                    | 220           | 280    | X 0 R 04 21 B B B E | X 0 R 04 21 B B B F |
| XV-OR/0.57 | 0,56                    | 220           | 280    | X 0 R 05 21 B B B E | X 0 R 05 21 B B B F |
| XV-OR/0.76 | 0,75                    | 220           | 280    | X 0 R 06 21 B B B E | X 0 R 06 21 B B B F |
| XV-OR/0.98 | 0,92                    | 220           | 280    | X 0 R 07 21 B B B E | X 0 R 07 21 B B B F |
| XV-OR/1.27 | 1,26                    | 220           | 280    | X 0 R 09 21 B B B E | X 0 R 09 21 B B B F |
| XV-OR/1.52 | 1,48                    | 220           | 280    | X 0 R 11 21 B B B E | X 0 R 11 21 B B B F |
| XV-OR/2.30 | 2,28                    | 190           | 210    | X 0 R 13 21 B B B E | X 0 R 13 21 B B B F |

P1) Max. working pressure - P3) Max. peak pressure

For heavy-duty applications, it is recommended to check the admissible torque of the shaft



Dimensions table

| TYPE       | Weight<br>kg | A    | B    | C    | D         | D         |
|------------|--------------|------|------|------|-----------|-----------|
|            |              | mm   | mm   | mm   | IN        | OUT       |
| XV-OR/0.17 | 0,400        | 55,8 | 26,2 | 46,8 | 1/4" BSPP | 1/4" BSPP |
| XV-OR/0.25 | 0,410        | 56,4 | 26,5 | 47,4 | 1/4" BSPP | 1/4" BSPP |
| XV-OR/0.45 | 0,420        | 58,0 | 27,3 | 49,0 | 1/4" BSPP | 1/4" BSPP |
| XV-OR/0.57 | 0,430        | 59,0 | 27,8 | 50,0 | 1/4" BSPP | 1/4" BSPP |
| XV-OR/0.76 | 0,440        | 60,5 | 28,5 | 51,5 | 1/4" BSPP | 1/4" BSPP |
| XV-OR/0.98 | 0,460        | 62,0 | 29,3 | 53,0 | 1/4" BSPP | 1/4" BSPP |
| XV-OR/1.27 | 0,480        | 64,5 | 30,5 | 55,5 | 1/4" BSPP | 1/4" BSPP |
| XV-OR/1.52 | 0,500        | 66,5 | 31,5 | 57,5 | 1/4" BSPP | 1/4" BSPP |
| XV-OR/2.30 | 0,560        | 72,5 | 34,5 | 63,5 | 1/4" BSPP | 1/4" BSPP |

T.1 = 11.7÷13.7 [Nm] - screw tightening torque M6

T.2 = 9.2 [Nm] - admissible shaft torque (N.B. When choosing a shaft, always check the admissible torque).


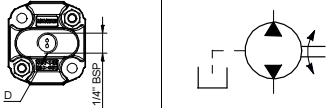
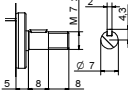
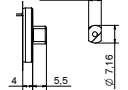
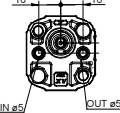
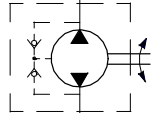
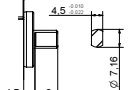
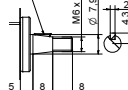

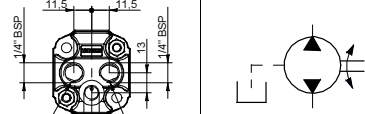
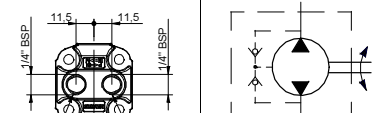
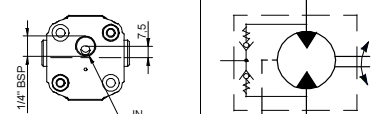

T.4 = 0.3÷0.5 bar - max. drainage pressure

26/08/04 XR0621888E.dft

# Table of variations

**XV-OR**

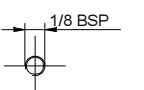
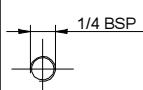
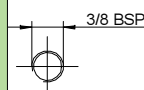
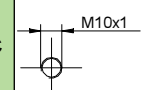
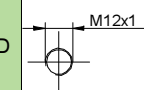
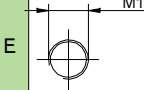
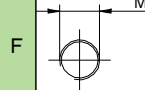
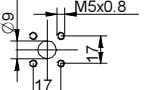
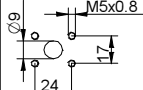
## ø22 "HY" Body-Shaped FLANGE

| ø22 "HY" Body-Shaped FLANGE   |    | Shaft   |   | Cover                                  |   |  |   |
|---|----|---|---|--|---|--|---|
|  | 21 | CI001 - Parallel<br>T.2 = 2.1 [Nm]  | A   | CF001 - Milled shank<br>T.2 = 9.2 [Nm] | B | <br>External drainage   | E |
|   |    |  |  |  |   |  |   |
|  | 24 | CF005 - Milled shank<br>T.2 = 8.4 [Nm]  | F   | CO001 - Tapered<br>T.2 = 21.9 [Nm]     | E | <br>Internal drainage   | F |
|   |    |  |  |  |   |  |   |
|  | 25 |   |   |  |   | <br>IN + OUT + external | K |
|   |    |   |   |  |   |  |   |
|   |    |   |   |  |   | <br>IN + OUT + internal | L |
|   |    |   |   |  |   |  |   |
|   |    |   |   |  |   | <br>Single inlet      | M |
|   |    |   |   |  |   |  |   |
|   |    |   |   |  |   | <br>Flange drainage   | P |
|   |    |   |   |  |   |  |   |

| Displacement |      |
|--------------|------|
| TYPE         | CODE |
| XV-OR/0.17   | 01   |
| XV-OR/0.25   | 02   |
| XV-OR/0.45   | 04   |
| XV-OR/0.57   | 05   |
| XV-OR/0.76   | 06   |
| XV-OR/0.98   | 07   |
| XV-OR/1.27   | 09   |
| XV-OR/1.52   | 11   |
| XV-OR/2.30   | 13   |

| Standard bodies      |                  |       |       |
|----------------------|------------------|-------|-------|
| Displacement cm3/rev | Standard threads |       |       |
|                      | 0.17             | B - B | Z - Z |
| 0.25                 | B - B            | Z - Z |       |
| 0.45                 | B - B            | Z - Z |       |
| 0.57                 | B - B            | Z - Z |       |
| 0.76                 | B - B            | Z - Z |       |
| 0.98                 | B - B            | Z - Z |       |
| 1.27                 | B - B            | Z - Z |       |
| 1.52                 | B - B            | Z - Z |       |
| 2.30                 | B - B            | Z - Z |       |

Table showing standard flange and thread combinations available in stock

| Body (threads/flanges)  |   |   |   |   |   |   |   |  |   |   |   |   |   |
|---|---|---|---|---|---|---|---|--|---|---|---|---|---|
|  | A |  | B |  | C |  | D |  | E |  | F |  | G |
|  | H |  | I | Closed Body   |   | Z   |   |  |   |   |   |   |   |