

reversible motor - series XV

XV-OM

BH TYPE MOTOR
ø22 BODY-SHAPED FLANGE - MILLED SHANK

X 0 M 06 07 B B B E

Series	X	series XV
Group	0	group 0
Category	M	reversible motor
Displacement	06	0.76
Flange	07	Ø22 BH reversible rotation
Shaft	B	CF001 - Milled shank ø7 - thk.5
Body	IN	inlet - 1/4" GAS
	OUT	outlet - 1/4" GAS
Cover	E	reversible w/external drainage



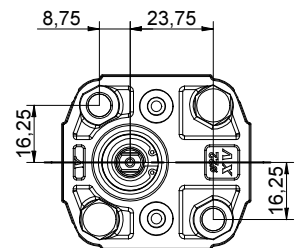
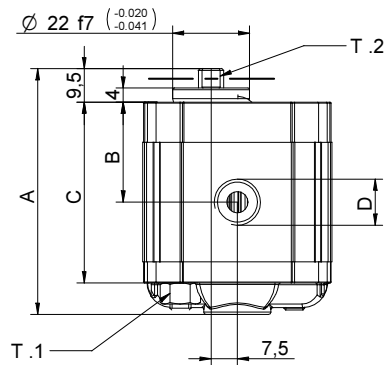
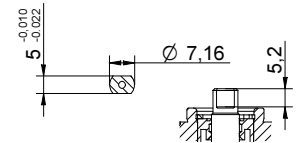
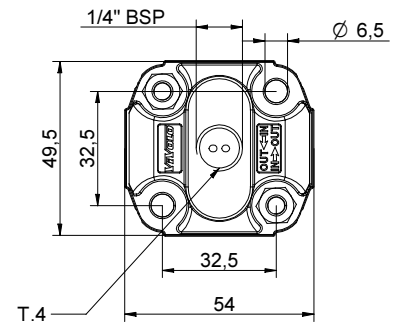
XM012

Technical data table

TYPE	Displacement cm3/rev	Max. Pressure		CODE	
		P1 bar	P3 bar	External drainage	Internal drainage
XV-OM/0.45	0,45	220	280	X 0 M 04 07 B B B E	X 0 M 04 07 B B B F
XV-OM/0.57	0,56	220	280	X 0 M 05 07 B B B E	X 0 M 05 07 B B B F
XV-OM/0.76	0,75	220	280	X 0 M 06 07 B B B E	X 0 M 06 07 B B B F
XV-OM/0.98	0,92	220	280	X 0 M 07 07 B B B E	X 0 M 07 07 B B B F
XV-OM/1.27	1,26	220	280	X 0 M 09 07 B B B E	X 0 M 09 07 B B B F
XV-OM/1.52	1,48	220	280	X 0 M 11 07 B B B E	X 0 M 11 07 B B B F
XV-OM/2.30	2,28	190	210	X 0 M 13 07 B B B E	X 0 M 13 07 B B B F

P1) Max. working pressure - P3) Max. peak pressure

For heavy-duty applications, it is recommended to check the admissible torque of the shaft



26/08/04 X0R0607888E.dft


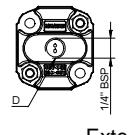
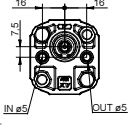
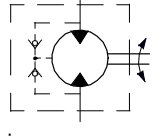
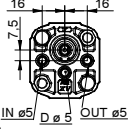
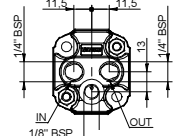
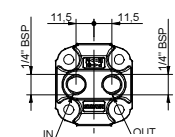

T.1 = 11.7÷13.7 [Nm] - screw tightening torque M6

T.2 = 9.2 [Nm] - admissible shaft torque (N.B. When choosing a shaft, always check the admissible torque).

Table of variations

XV-OM

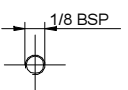
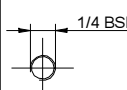
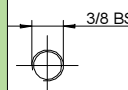
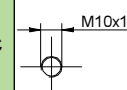
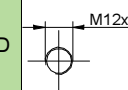
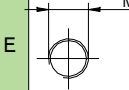
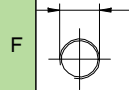
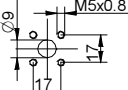
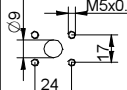
ø22 "BH" Body-Shaped FLANGE

ø22 "BH" Body-Shaped FLANGE		Shaft		Cover			
	07	CI001 - Parallel T.2 = 2.1 [Nm]	A	CF001 - Milled shank T.2 = 9.2 [Nm]	B	 External drainage	E
	10	CF005 - Milled shank T.2 = 8.4 [Nm]	F	CO001 - Tapered T.2 = 21.9 [Nm]	E	 Internal drainage	F
	11					 IN + OUT + external	K
						 IN + OUT + internal	L
						 Flange drainage	P

Displacement	
TYPE	CODE
XV-OM/0.45	04
XV-OM/0.57	05
XV-OM/0.76	06
XV-OM/0.98	07
XV-OM/1.27	09
XV-OM/1.52	11
XV-OM/2.30	13

Standard bodies		
Displacement cm ³ /rev	Standard threads	
	0.17	B - B
0.25	B - B	Z - Z
0.45	B - B	Z - Z
0.57	B - B	Z - Z
0.76	B - B	Z - Z
0.98	B - B	Z - Z
1.27	B - B	Z - Z
1.52	B - B	Z - Z
2.30	B - B	Z - Z

Table showing standard flange and thread combinations available in stock

Body (threads/flanges)													
	A		B		C		D		E		F		G
	H		I	Closed Body		Z							