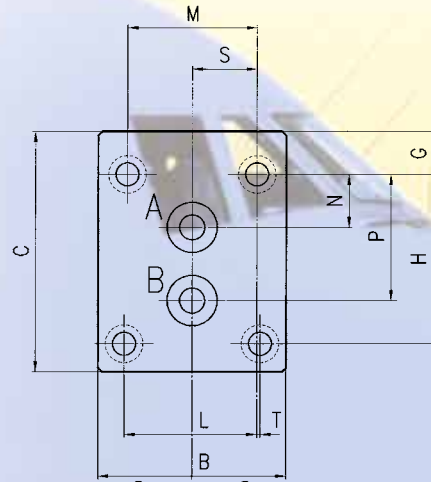
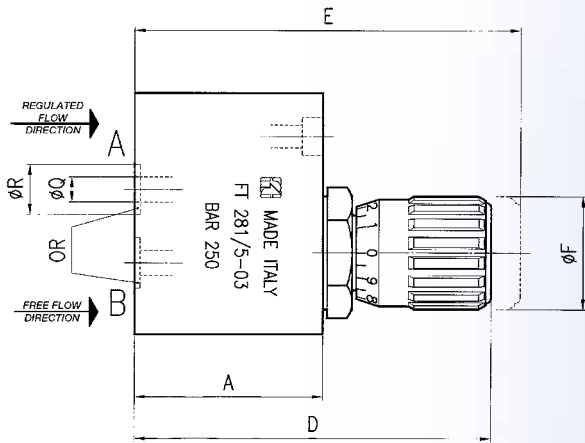




## MATERIALS

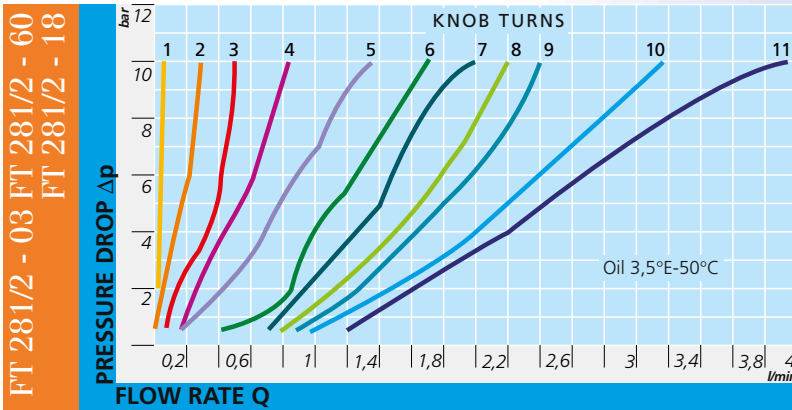
|                     |                               |
|---------------------|-------------------------------|
| TERMINAL STRIP      | 11 S MN Pb 30 - UNI EN 10087  |
| CARTRIDGE BODY      | 11 S MN Pb 30 - UNI EN 10087  |
| NEEDLE              | AISI 303 - UNI EN 10088       |
| HANDWHEEL           | GD AL SI 12 - UNI EN AB 46100 |
| NIPPLE              | NYLON 6                       |
| OR                  | NITRILE                       |
| ANTIEXTRUSION RINGS | PTFE                          |

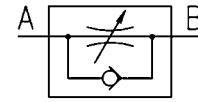
*All components are surface treated and protected*



## DIMENSIONS

| TYPE | A  | B  | C    | D  | E  | $\varnothing F$ | G    | H    | L     | M  | N    | P    | $\varnothing Q$ | $\varnothing R$ | S    | T    | OR  | SCREW | WEIGHT<br>KG |
|------|----|----|------|----|----|-----------------|------|------|-------|----|------|------|-----------------|-----------------|------|------|-----|-------|--------------|
| 03   | 38 | 45 | 55,5 | 72 | 80 | 22              | 9,25 | 40,5 | 31,75 | 31 | 12,7 | 30,2 | 5               | 12              | 15,5 | 0,75 | 108 | M5x45 | 0,710        |



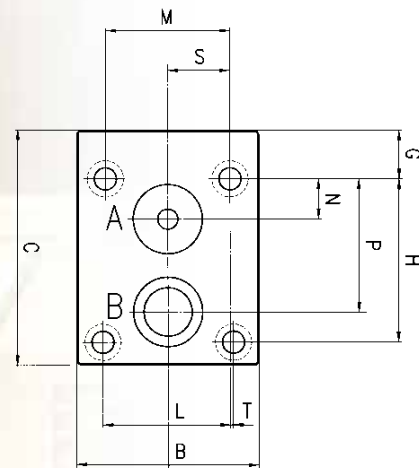
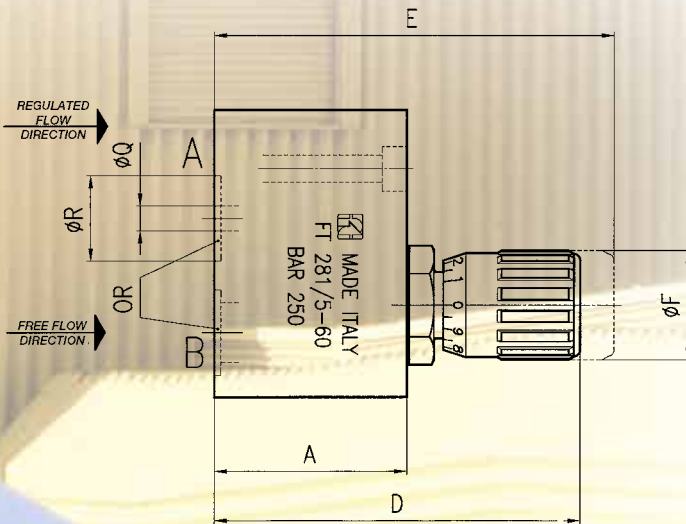


## SINGLE-ACTING MICROFINE CONTROL PLATE VALVES

They are the most suitable solution for those applications requiring precise adjustment characteristics or for reduced rate of flow. They are characterised by a great flow rate section in the direction of free flow. They are provided with plate connections mod. CETOP 03 or interchangeable with the broadly used valves. The connection seals are equipped in series. Max. working pressure 250 bar.



# FT 281/5



### DIMENSIONS

| TYPE | A  | B  | C  | D  | E  | $\phi F$ | G  | H    | L     | M  | N  | P  | $\phi Q$ | $\phi R$ | S    | T    | OR   | SCREW | WEIGHT<br>KG |
|------|----|----|----|----|----|----------|----|------|-------|----|----|----|----------|----------|------|------|------|-------|--------------|
| 60   | 39 | 45 | 58 | 73 | 81 | 22       | 12 | 40,5 | 31,75 | 31 | 10 | 33 | 5        | 17,2     | 15,5 | 0,75 | 2056 | M5x45 | 0,760        |

### EXAMPLE FOR ORDERING

| CODE     | TYPE |
|----------|------|
| FT 281/5 | 03   |
| FT 281/5 | 60   |

FLUSSO LIBERO  
FT 281/5 - 03 FT 281/5 - 60

