


MATERIALS

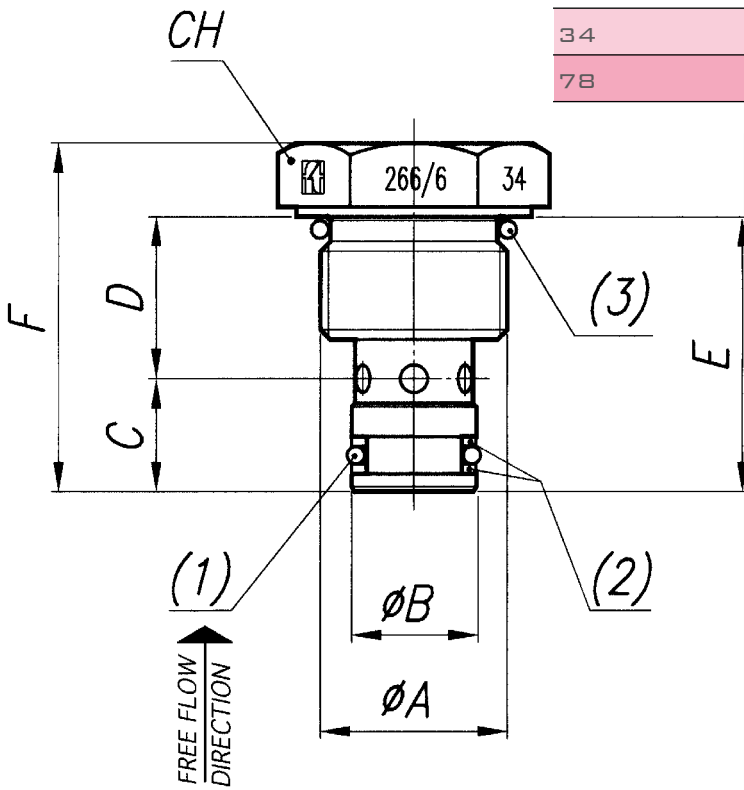
BODY	11 S MN PB 30 - UNI EN 10087
BALL	UNI 100 C 6
SPRING	AISI 302
BALL GUIDE	NYLON 66 + CARBON FIBRE

EXAMPLE FOR ORDERING

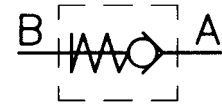
	CODE	TYPE	VITON SEAL	KNOB IN PLASTIC
STEEL	FT 266/6	34	V	MP
STAINLESS STEEL	FT 2266/6	34	-	MP

SEAL KIT ON THE SEATING

TYPE	1 (OR)	2 (BK)
34	2037	266/6.022.00.1-34
78	2050	267/2.022.00.1-38


DIMENSIONS

TYPE	ϕA UNI 4534	ϕB	C	D	E	F	CH	(3)
34	3/4"-16 UNF	12,7	11,5	16,5	28	35,5	24	2068
78	7/8"-14 UNF	15,8	12,5	20	32,5	40	27	3075



CARTRIDGE MOUNTED SINGLE-ACTING CONTROL VALVES MAX 350 BAR

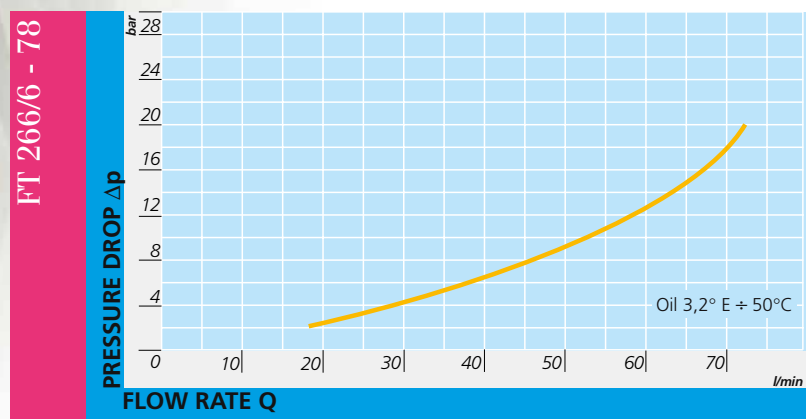
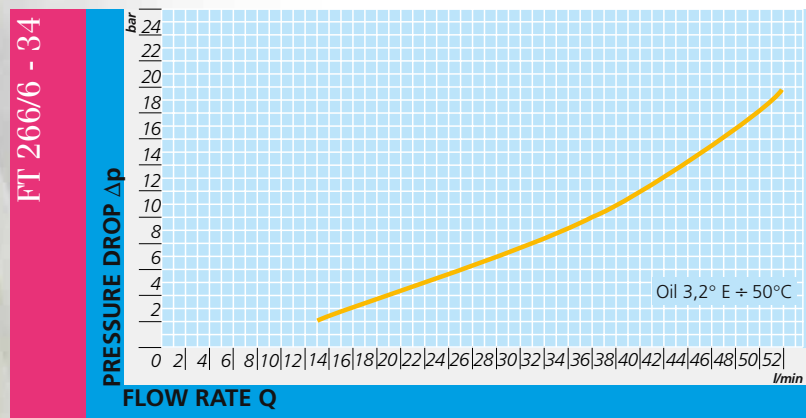
They allow the flow in one direction, shutting-off the same in the opposed direction.

On request

- Complete with Viton seals (V)
- AISI 316 Stainless steel version



FT 266/6-UNF

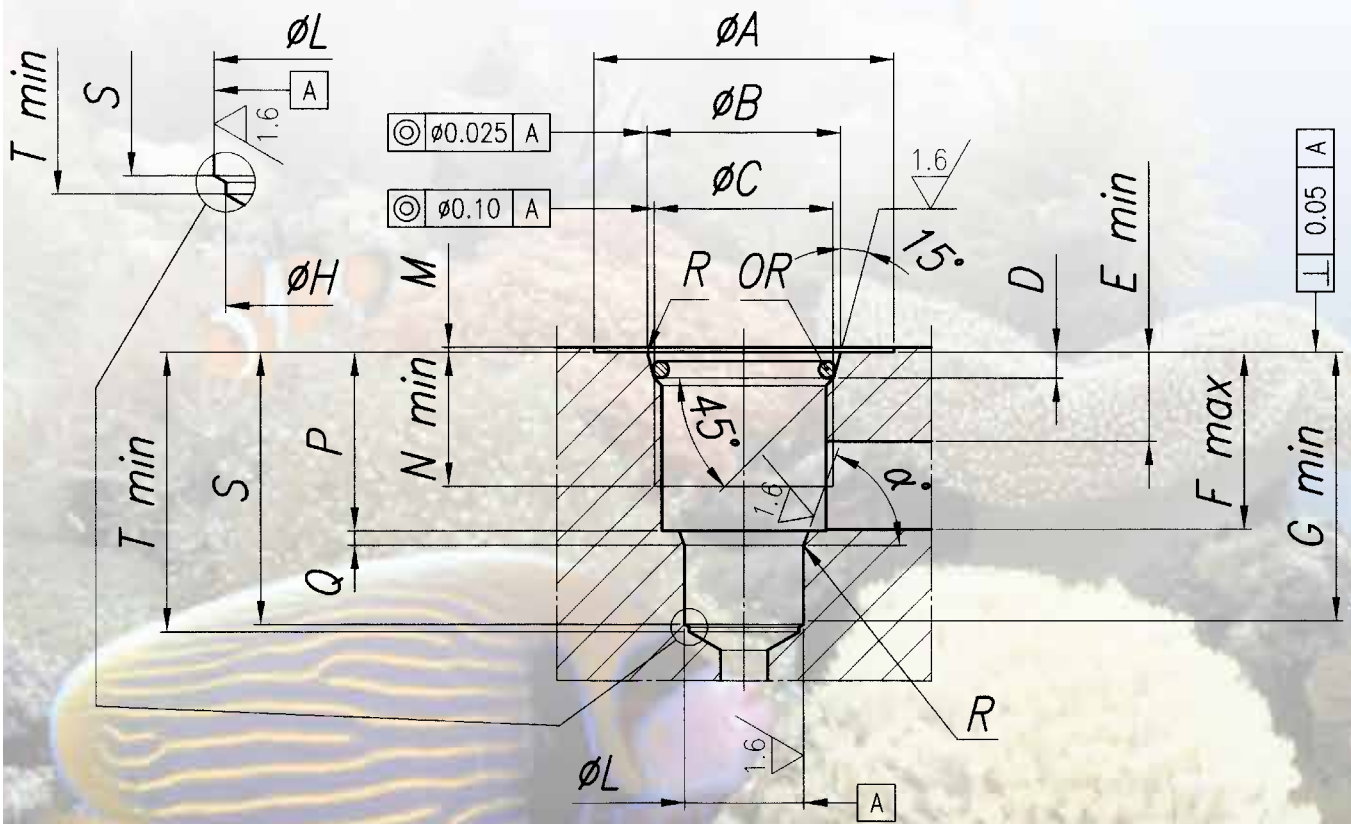


TECHNICAL DATA

TYPE	MAX. WORKING PRES- SURE BAR	MIN. BURSTING PRES- SURE BAR	WORKING TEMPERATURE °C	FILTRATION GRADE μM ABSOLUTE
34	320	1300	-20°/+100°	25
78	320	1300	-20°/+100°	25



Sealing realized
with OR seals
on conical seating
for UNF threads



DRAWING OF CAVITY MACHINE FOR CARTRIDGE MOUNTED VALVES



FT 265/2 - 266/2 - 266/5 - 266/6 - 268/2

CONICAL SEATING FOR OR FT 265/2 - FT 266/2 FT 266/5 - FT266/6 - 268/2

TYPE	∅A	∅B	^C UNI 4534	D	E	F	G	∅H	∅L
34	32 \pm 0,4	20,65 \pm 0,1	3/4"-16UNF-2B	2,75	9,5	18,9	28,6	11,7	12,7 $^{+0,05}_{-0}$
78	32 \pm 0,4	24 \pm 0,1	7/8"-14UNF-2B	2,75	12,35	24,25	31,85	15	15,875 $^{+0,05}_{-0}$

CONICAL SEATING FOR OR FT 265/2 - FT 266/2 FT 266/5 - FT266/6 - 268/2

TYPE	M	N	P	Q	R	S	T	α°	OR
34	0,5	14,3	19,05 \pm 0,13	1,53 \pm 0,08	0,1 $^{+0,15}_{-0}$	29 \pm 0,4	29,8	70°	2068
78	0,5	15,75	24,45 \pm 0,1	1,4 \pm 0,1	0,1 $^{+0,15}_{-0}$	33,75 \pm 0,4	34,5	60°	3075