



# CHECK VALVE VP-NV

- NG 6, 10
- Up to 350 bar [5 076 PSI]
- Up to 60 l/min [26,4 GPM]
- Connecting dimensions to ISO 4401.
- For vertical stacking - sandwich plate design.
- Free hydraulic fluid flow in one direction.

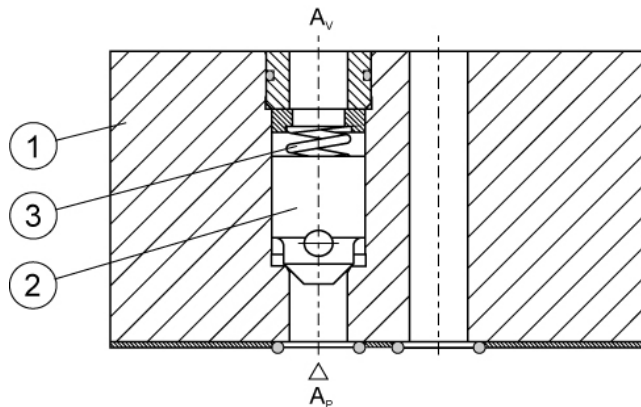


VP-NV-6, VP-NV-10

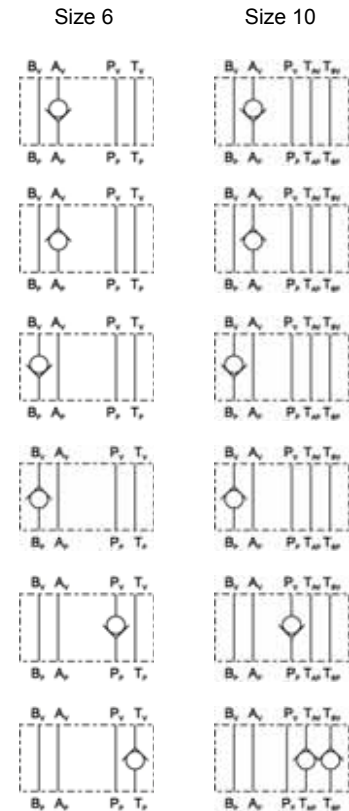
Direct operated valves

## Operation

Check valves type VP-NV permit the hydraulic fluid flow in one direction, with a tight-off in the opposite direction. Sandwich plate design - for vertical stacking. These valves consist of a housing (1), poppet (2), and a spring (3). A poppet valve can be fitted into the line P, T, A or B. It serves for shutting off the hydraulic fluid flow in one direction, permitting a free flow in the opposite direction. This is made possible by the poppet (2) which provides positive seating. The hydraulic fluid flow under cracking pressure 0,4 bar [5.8 PSI] causes the poppet to lift, thus freeing the flow. In the opposite direction, the spring (3) pushes the poppet (2) against the seat, shutting the hydraulic fluid flow off.



## Hydraulic symbols



Pilot operated valves

## Features

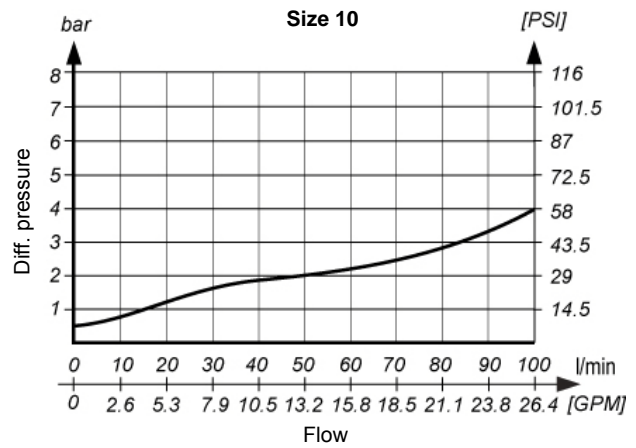
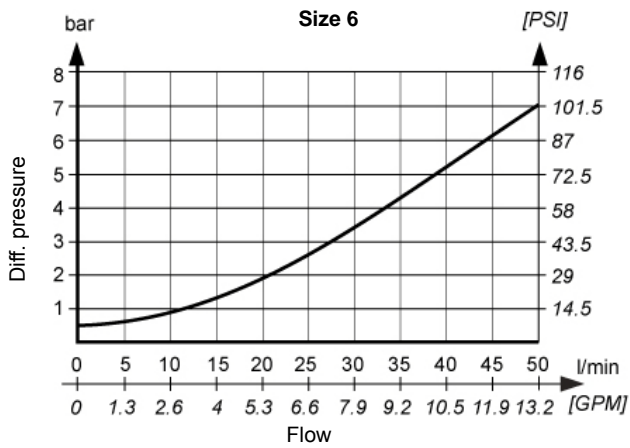
Size		6	10
Flow rate	l/min [GPM]	50 [13.2]	100 [26.4]
Flow velocity	m/s	4	
Operating pressure	Bar [PSI]	350 [5 076]	
Cracking pressure	Bar [PSI]	0,4 [5.8]	
Oil temperature range	°C [°F]	-20 to +70 [-4 to +158]	
Viscosity range	mm <sup>2</sup> /s [SUS]	15 to 380 [69,5 to 1.760]	
Filtration	NAS 1638	8	
Mass	kg [lbs]	0,87 [1.91]	2,77 [6.10]

Counterbalance valves

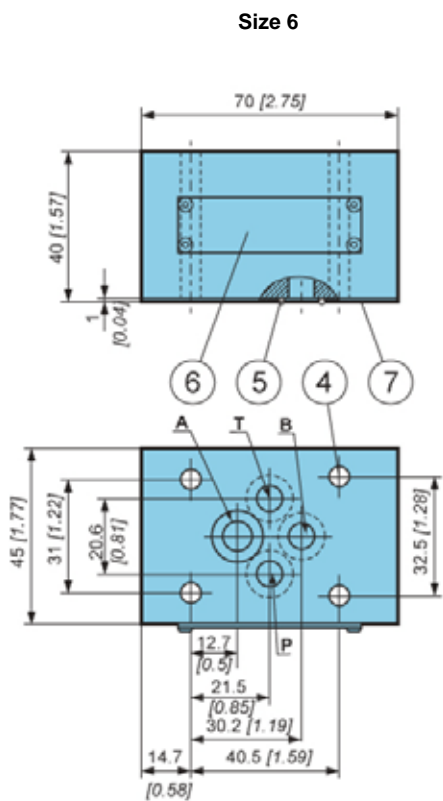


**ΔP-Q Performance curves**

Measured at 50C [122F]  
and viscosity of 32 mm<sup>2</sup>/s [148 SUS].

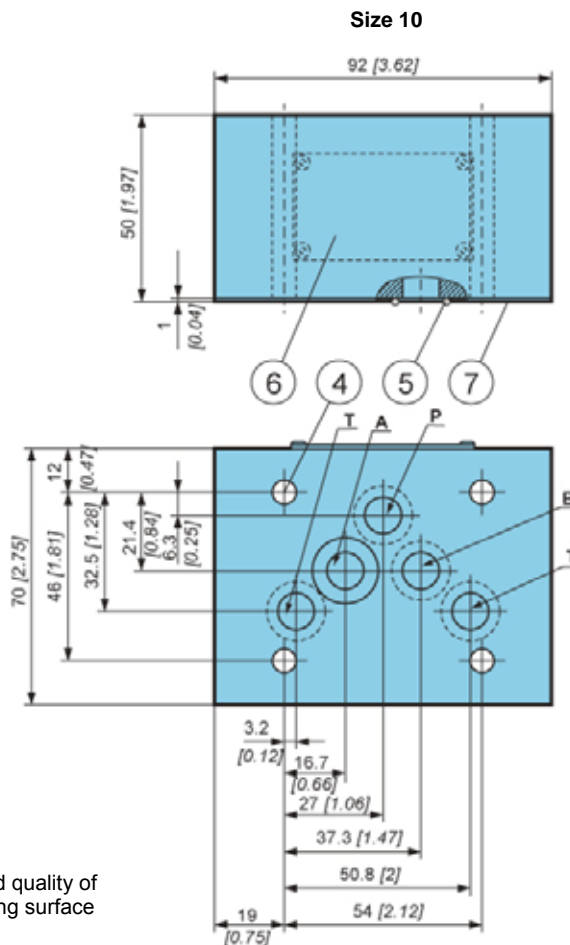
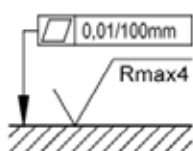


**Dimensions**



- 4. Bores for fixing screws M5
- 5. O-ring 9,25x1,78
- 6. Nameplate
- 7. O-ring plate

Required quality of the mating surface



- 4. Bores for fixing screws M6
- 5. O-ring 12,42x1,78
- 6. Nameplate
- 7. O-ring plate



**Model code**

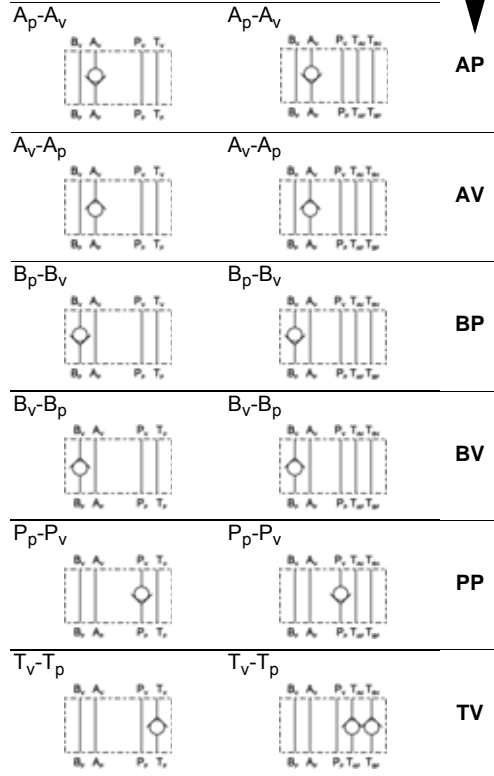


**Size**

Size 6	6
Size 10	10

**To be fitted into line...Flow direction**

Size 6	Size 10
--------	---------



**Seals type**

NBR seals for mineral oil HL,HLP to DIN 51524	No designation
FPM seals for HETG, HEES, HEPG to VDMA 24568 and ISO 15380	E

**Special requirements to be briefly specified**

Direct operated valves

Pilot operated valves

Counterbalance valves

