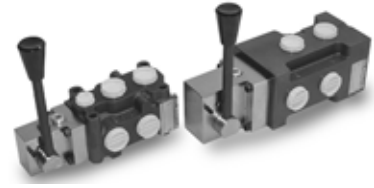




6/2 WAY DIRECTIONAL VALVES KV

- NG 6, 10
- Up to 350 bar [5 076 PSI]
- Up to 60 L/min [15.8 GPM] for NG 6
- Up to 120 L/min [31.7 GPM] for NG 10
- Threaded connections to ISO 9974 (Metric), ISO 1179 (BSPP/Gas).



KV-6/2-6-R..., KV-6/2-10-R...

Mechanically operated

Operation

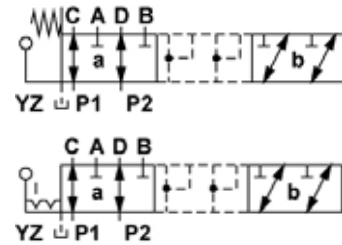
Directional valves type KV with direct mechanical operation by means of a lever control the direction of the hydraulic medium flow. They are mostly used as link between two consumers and the basic directional valve, when we want to control both consumers alternately by means of one basic directional valve.

There are two types of operation:

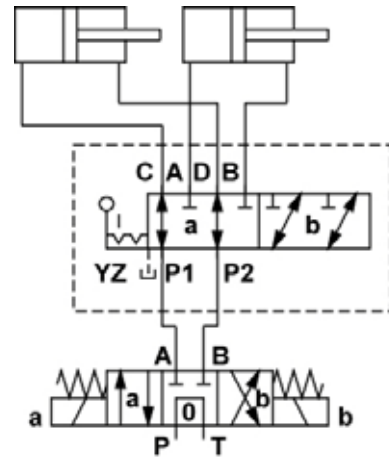
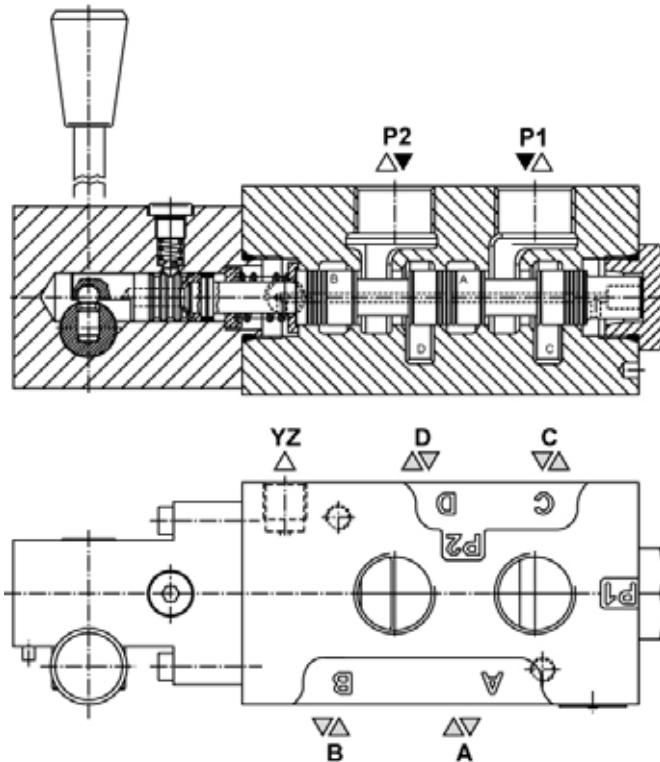
- 1/ With control spool not held in the operating position (the control spool returns to position "a" on ceasing to apply force to the mechanism - type KV-...-R).
- 2/ With control spool held (detent) in the operating position (the control spool remains in the operating position on ceasing to apply force to the control mechanism lever - type KV-...-RA).

Hydraulic symbols

Spool types



Mounting example



Hydraulically operated

Electrically operated



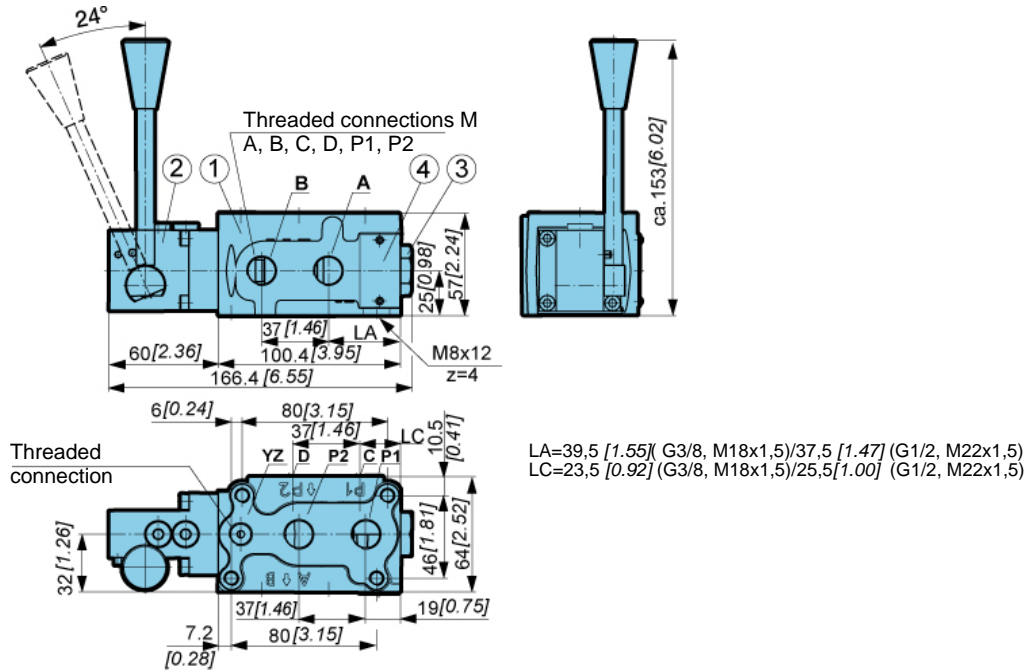
Features

Size		6	10
Flow rate	L/min [GPM]	60 [15.8]	120 [31.7]
Operating pressure	With YZ	bar [PSI] 350 [5 076]	
	Without YZ	bar [PSI] 160 [2 320]	
Viscosity range	mm ² /s [SUS]	15 to 380 [69,5 to 1 760]	
Oil temperature range	°C [°F]	-20 to +70 [-4 to 158]	
Filtration	NAS 1638	8	
Mass	kg [lb]	2,4 [5.3]	5,3 [11.7]
Mounting position		Optional	

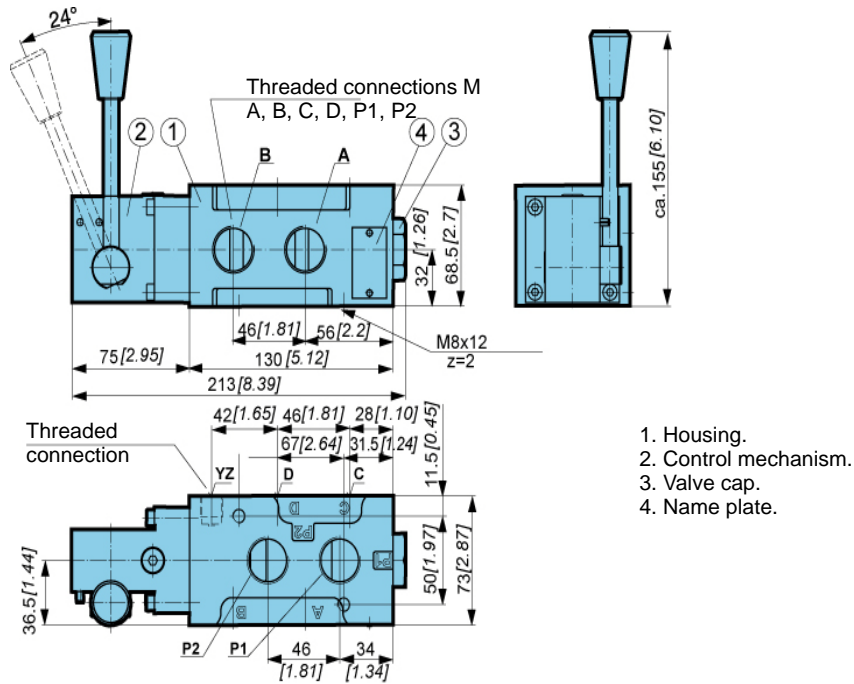


Dimensions

Size 6



Size 10



Mechanically operated

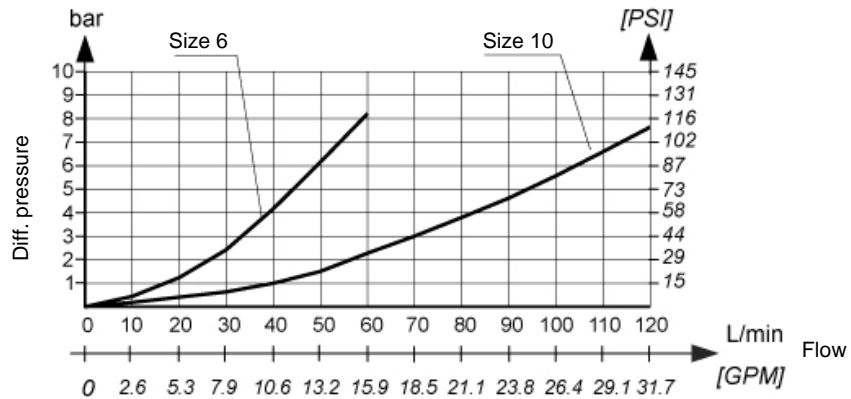
Hydraulically operated

Electrically operated



ΔP-Q Performance curves

Measured at 50°C [122°F] and viscosity of 32 mm²/s [148 SUS].



Model code

K V - 6 / 2 - [] - [] - [] - [] - [] - *

Size		
Size 6	6	
Size 10	10	
Control spool held		
	R	
	RA	
Threaded connections (M ; YZ)		
Size 6	M18x1,5; M14x1,5	No designation
	M22x1,5; M14x1,5	M22
	G3/8; G1/4	G3/8
	G1/2; G1/4	G1/2
Size 10	3/4-16 UNF-2B; 9/16-18 UNF-2B	SAE 8
	M22x1,5; M14x1,5	No designation
	M27x1,5; M14x1,5	M27
	G1/2; G1/4	G1/2
	G3/4; G1/4	G3/4
	7/8-14 UNF-2B; 9/16-18 UNF-2B	SAE 10
Drainage		
Without YZ	No designation	
With YZ	YZ	
Seal type		
NBR seals for mineral oil HL, HLP to DIN 51524	No designation	
FPM seals for HETG, HEES, HEPG to VDMA 24568 and ISO 15380	E	
Special requirements to be briefly specified		