



2/2 WAY DIRECTIONAL VALVES KVC-NV

- NG 6
- Up to 210 bar [3 045 PSI]
- Up to 40 L/min [10.5 GPM]



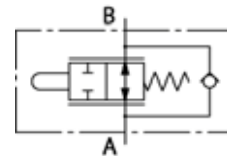
KVC-2/2-NV-T

Mechanically operated

Features

Size	6	
Flow rate	L/min [GPM]	40 [10.5]
Operating pressure	bar [PSI]	210 [3 045]
Viscosity range	mm ² /s [SUS]	15 to 380 [69.5 to 1 760]
Oil temperature range	°C [°F]	-20 to +70[-4 to 158]
Filtration	ISO 4406-1999	19/17/14
Mass	kg [lb]	1,2 [2.6]
Seal type	NBR seals for mineral oil HL, HLP, to DIN 51524	

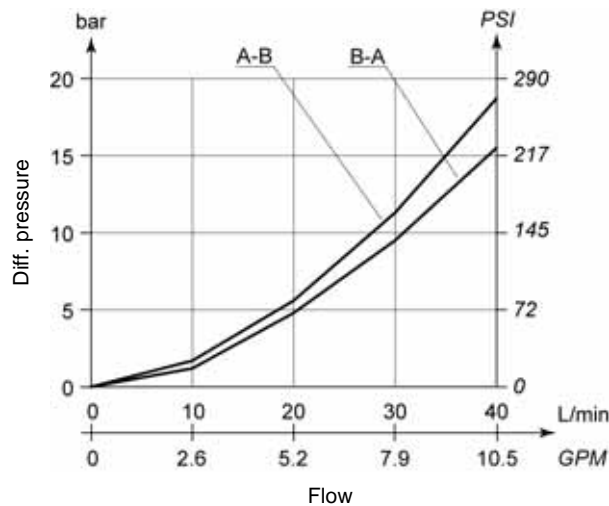
Hydraulic symbol



Hydraulically operated

ΔP-Q Performance curves

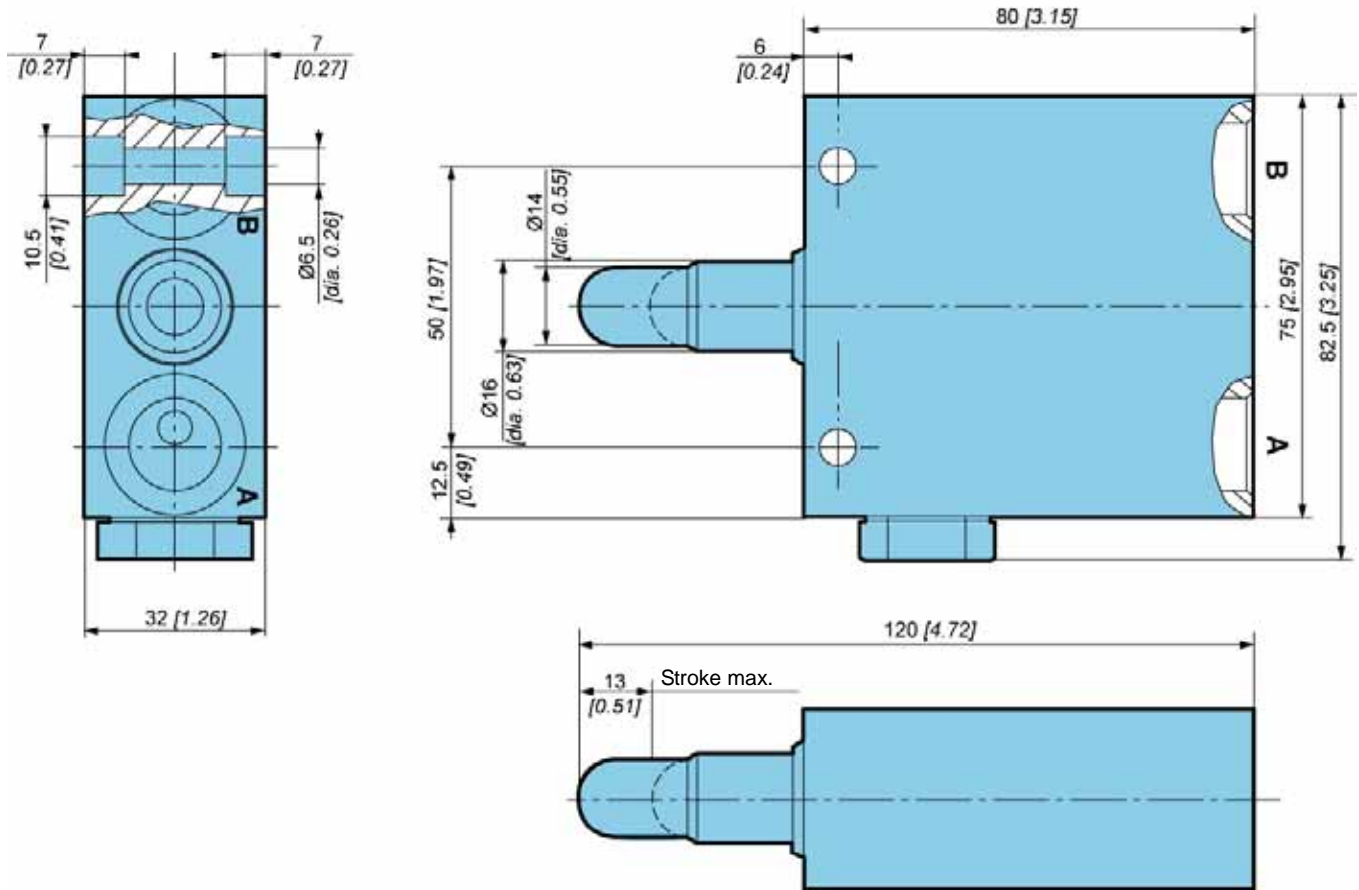
Measured at 50°C [122°F] and viscosity of 32 mm²/s [148 SUS].



Electrically operated



Dimensions



Model code

K V C - 2 / 2 - N V - T - - *

Threaded connections

M18x1,5	No designation
G3/8	3/8

Special requirements to be briefly specified