

CETOP-03 SIZE, DIRECT OPERATED, SOLENOID POPPET TYPE VALVE



Characteristics

TYPE	P-MAX PRESSURE	T-MAX PRESSURE	MAX FLOW RECOMMENDED	WEIGHT
DES-03	350 bar	210 bar	30 l/min	1.6 Kg.

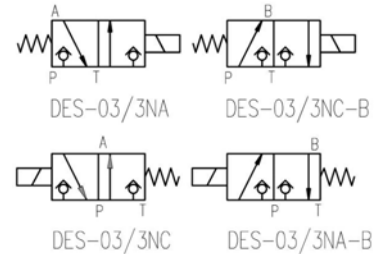
Description

3 way directional solenoid poppet type valve, direct operated, for CETOP 03 plate-mounting.

This valve is studied for hydraulic circuits application, where leakage free is strictly required, thanks to the poppet execution combined with fine mechanical manufacturing.

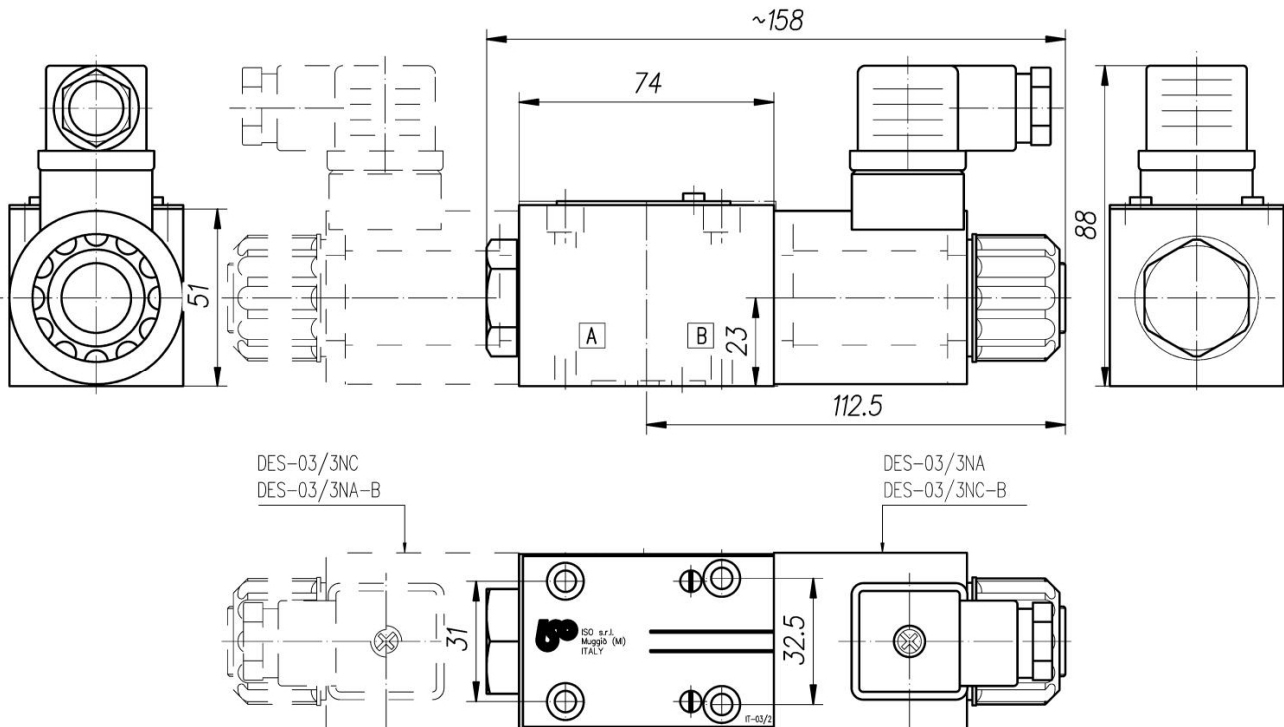
The perfect hydraulic balance makes the switching easy also with high pressures on ports.

Symbol



N°4 screws TCEI M5x45

Dimensions



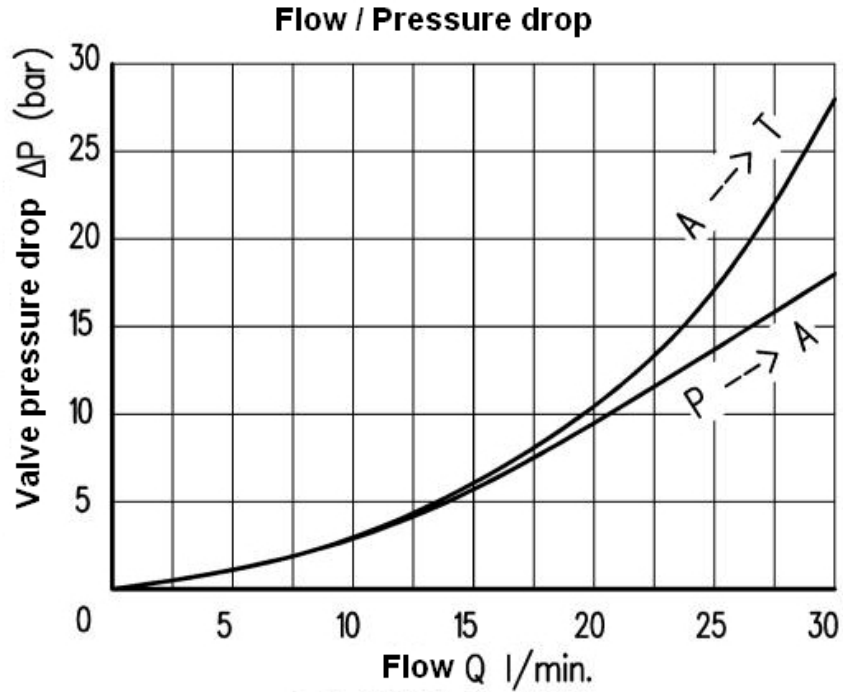
Installation rules

- The valves type DES can be mounted in any position. It is possible to orient the electric connector of coil in three positions: at 90° degree one from the other.
- Fluid to be used: hydraulic oil in compliance with DIN 51524 rules, viscosity between 30 and 100 mm²/s (cSt) at 40°C
- Recommended filtration: 25μ
- Hydraulic fluid temperature: from -20° to +75°C

CETOP-03 SIZE, DIRECT OPERATED, SOLENOID POPPET TYPE VALVE



Diagram



Ordering code

DES-03 / 3 * - *

Supply voltage:

- NA = Output port "A" connected to tank with de-energized solenoid
- NC = Output port "A" connected to P with de-energized solenoid
- NA-B = Output port "B" connected to tank with de-energized solenoid
- NC-B = Output port "B" connected to P with de-energized solenoid

12DC
24DC
48DC
110 DC
220 DC

CETOP-03 size direct operated, solenoid poppet type valve