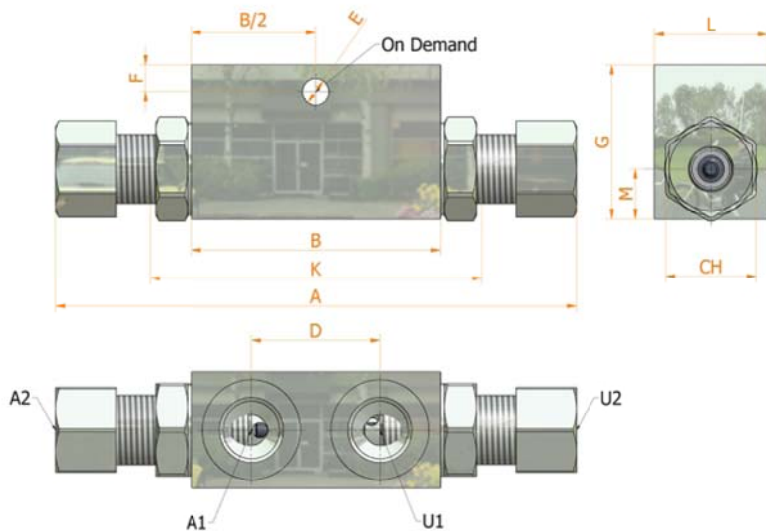
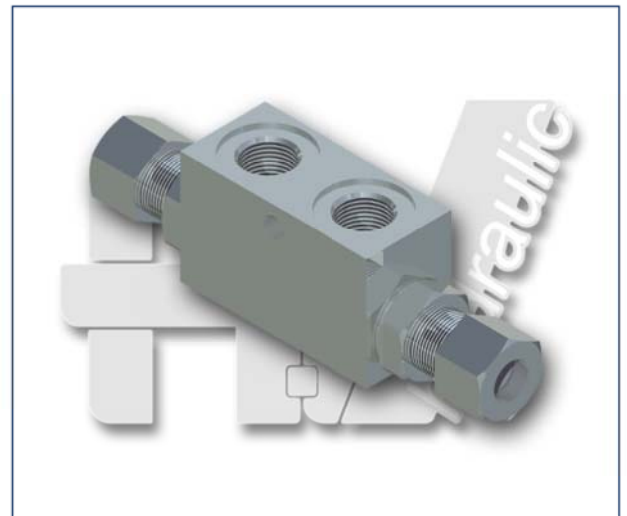
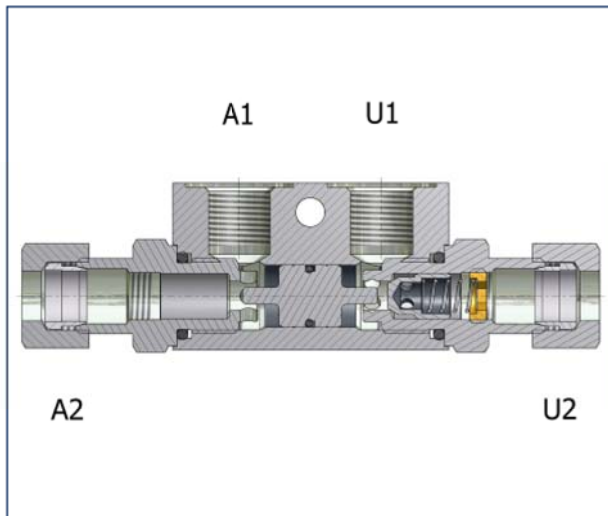
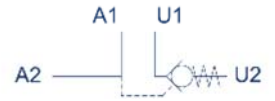


VBSE - DIN 2353

inline single acting
pilot operated
check valve



Specifications:

- Zinc plated steel body
- Heat treated components

Upon demand:

- Spring 0,5 bar
- Spring 8 bar



VBSE - DIN 2353

inline single acting
pilot operated
check valve



SPECIFICATIONS

DIMENSIONS	000	005	010	015	020	025	030
MAX. PRESSURE BAR	350	350	350	350	350	300	300
RATED FLOW lt/min	20	20	20	20	50	50	80
PILOT RATIO	1: 4,5	1: 4,5	1: 4,5	1: 4,5	1: 4,5	1: 4,5	1: 4
OPENING PRESSURE BAR	4	4	4	4	4	4	4

WEIGHT AND DIMENSIONS

DIMENSIONS	A	B	A1-U1 A2-U2 GAS	A1-U1 A2-U2 NPT	A1-U1 A2-U2 SAE	D	E	F	G	L	M	CH	K	WEIGHT KG
000	138	66	1/4 10	1/4 10	-	34	7,0	7,0	40	30	13	24	88	0,65
005	138	66	3/8 10	3/8 10	-	34	7,0	7,0	40	30	13	24	88	0,63
010	138	66	1/4 12	1/4 12	-	34	7,0	7,0	40	30	13	24	88	0,68
015	138	66	3/8 12	3/8 12	3/16 - 18 1/2	34	7,0	7,0	40	30	13	24	88	0,67
020	140	76	3/8 15	3/8 15	3/4 - 16 5/8	40	8,5	15,0	50	30	16	27	106	0,98
025	140	76	1/2 15	1/2 15	7/8 - 14 5/8	40	8,5	15,0	50	30	16	27	106	0,90
030	180	77	1/2 18	1/2 18	7/8 - 14 3/4	40	8,5	15,0	60	40	20	30	133	1,65

ITEM CODE

VBSE **DIN 2353** [] [] [] [] [] [] []

G GAS
N NPT
S SAE

C CONE
S BALL

O WITHOUT OR
R WITH OR

	A1-U1 GAS	A2-U2 --	A1-U1 NPT	A2-U2 --	A1-U1 SAE	A2-U2 INCH
000	1/4	10	1/4	10	-	-
005	3/8	10	3/8	10	-	-
010	1/4	12	1/4	12	-	-
015	3/8	12	3/8	12	9/16 - 18	1/2
020	3/8	15	3/8	15	3/4 - 16	5/8
025	1/2	15	1/2	15	7/8 - 14	5/8
030	1/2	18	1/2	18	7/8 - 14	3/4

O WITHOUT HOLE
F WITH HOLE

1 SPRING 0,5
4 SPRING 4
8 SPRING 8