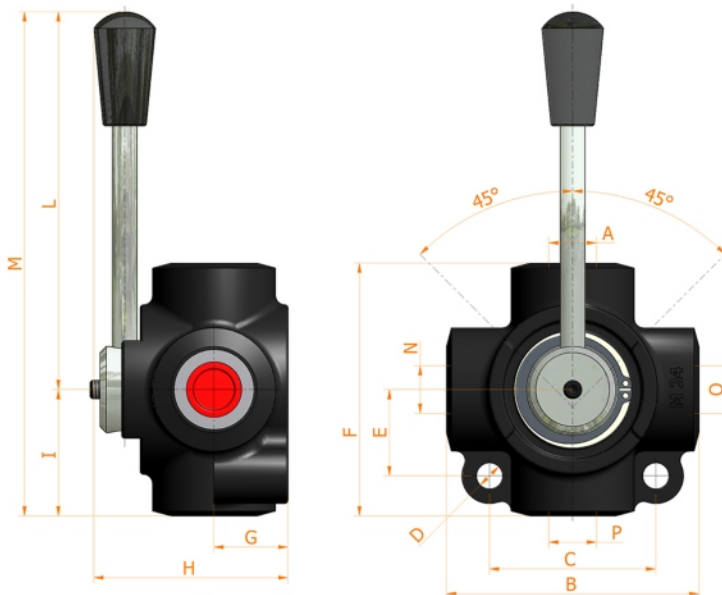
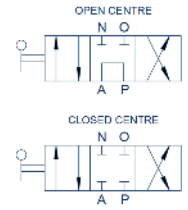




D4

4 ways flow inverter



Specifications:

- Iron cast body
- White zinc plated external parts
- Standard colour black

O-N-A GAS	FLOW liters/min	PRESSURE BAR	B mm	C mm	D mm	E mm	F mm	G mm	H mm	L mm	M mm	MASS KG	CODE OF OPEN CENTRE	CODE OF CLOSED CENTRE
1/4"	60	350	80	54	8,5	28	80	24	63	115	155	1,200	7001.0104	7001.0111
3/8"	60	350	80	54	8,5	28	80	24	63	115	155	1,200	7001.0100	7001.0107
1/2"	90	350	80	54	8,5	28	80	24	63	115	155	1,100	7001.0101	7001.0108
3/4"	120	350	94	74	10,5	38	94	31	77	115	162	2,200	7001.0102	7001.0109
1"	200	300	94	74	10,5	38	94	31	77	115	162	2,000	7001.0103	7001.0110

HV Hydraulic S.r.l.