

CETOP-05 SIZE PILOT-OPERATED MODULAR CHECK VALVE



Characteristics

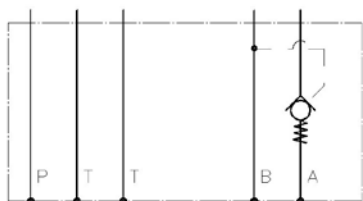
TYPE	SPRING	MAX PRESSURE	WEIGHT
IRME-05/*	2 bar	320 bar	3,1 Kg.

Description

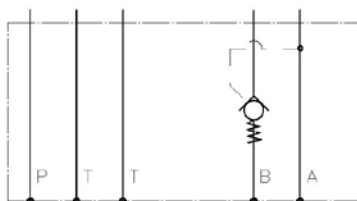
Cetop-05 size, pilot-operated modular check valve. Single on A or B ports, double on AB ports.

Symbol

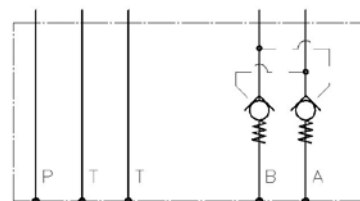
Type IRME-05/A



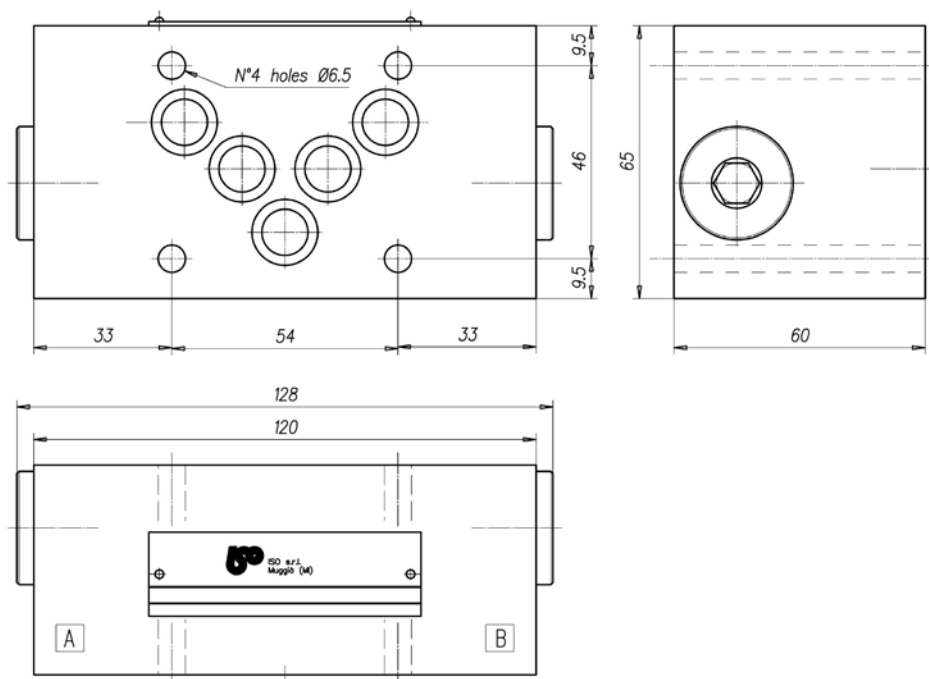
Type IRME-05/B



Type IRME-05/AB



Dimensions



Installation rules

- The valves type IRME can be mounted in any position
- Fluid to be used: hydraulic oil in compliance with DIN 51524 rules, viscosity between 30 and 100 mm²/s (cSt) at 40°C
- Recommended filtration of 25µ
- Hydraulic fluid temperature: from -20° to +75°C

Ordering code

IRME-05 / *

A=check on A port B=check on B port AB=check on AB port

CETOP- 05 size modular check valve