

IN-LINE MOUNTED CHECK VALVE



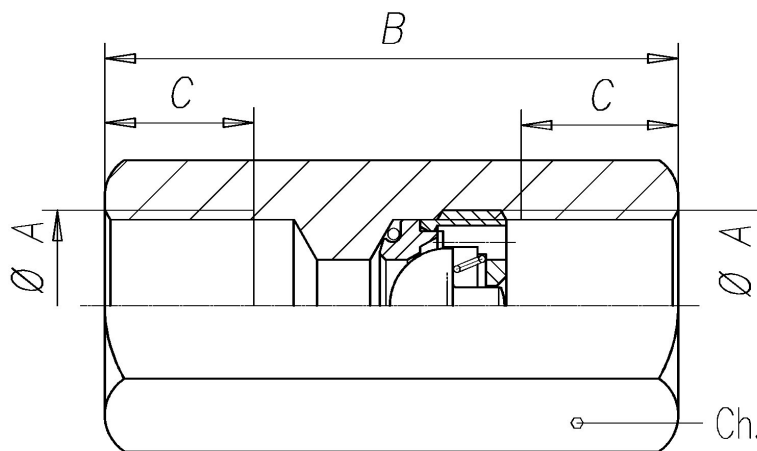
Characteristics

| TYPE | SIZE | MAX FLOW | MAX PRESSURE | OPENING PRESSURE |
|--------|---------|-----------|--------------|------------------|
| IRL-14 | 1/4"BSP | 20 l/min. | 500 bar | 0.1 bar |
| IRL-38 | 3/8"BSP | 35 l/min. | 500 bar | 0.1 bar |
| IRL-12 | 1/2"BSP | 60 l/min. | 350 bar | 0.15 bar |

Description Hydraulic check valve designed for in-line mounting. They mount IRC cartridges with ball valve (see datasheet E04-1).

Dimensions

Symbol



Datasheet E04-1

| TYPE | A | B | C | Ch. |
|--------|----------|----|----|-----|
| IRL-14 | 1/4" BSP | 45 | 12 | 19 |
| IRL-38 | 3/8" BSP | 50 | 13 | 22 |
| IRL-12 | 1/2" BSP | 55 | 15 | 27 |

Installation rules

- The valves type IRL can be mounted in any position
- Fluid to be used: hydraulic oil in compliance with DIN 51524 rules, viscosity between 30 and 100 mm²/s (cSt) at 40°C
- Recommended filtration: 25μ
- Hydraulic fluid temperature: from -20° to +75°C

Ordering code

| | | |
|-----------------------------|--------------|--------------|
| IRL | - | ** |
| | 14 = 1/4"BSP | 38 = 3/8"BSP |
| | 12 = 1/2"BSP | |
| In-line mounted check valve | | |