

SERIE 2.5VGP - 2.5VGP SERIES

COME ORDINARE - HOW TO ORDER

2.5VG	P	Cilindrata Size	Rotazione Rotation	Bocche Ports	Albero Shaft	Flangia Flange	Pos. bocche Port position	Guarnizioni Seals	Opzioni Options
Serie Series	Pompa pump	23	D Destrosa CW	F0	S0	A0	-	-	-
		25	S Sinistrosa CCW	L0	S1		C	V	
		26.5		Z0	S2		R	H	
		28			S3			T	
		30						N	
		32							
		36							
		40							

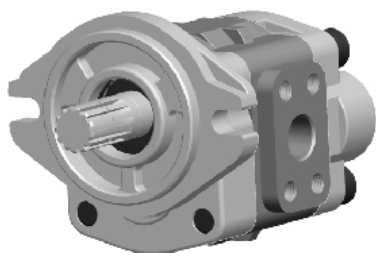
Posizione bocche - Port position

- Aspirazione laterale - Mandata laterale / *side Inlet - side Outlet*
- C Aspirazione posteriore - Mandata laterale / *back Inlet - side Outlet*
- R Aspirazione e Mandata posteriore / *back Inlet - back Outlet*

Guarnizioni - Seals

- Buna (-10°C + 80°C) - Max pressione in Aspirazione 3 bar assoluti / *Inlet pressure up to 3 bar absolute*
- V Viton (-10°C + 120°C) - Max pressione in Aspirazione 3 bar assoluti / *Inlet pressure up to 3 bar absolute*
- H Silicon (-40°C + 80°C) - Max pressione in Aspirazione 3 bar assoluti / *Inlet pressure up to 3 bar absolute*
- T Buna (-10°C + 80°C) - Max pressione in Aspirazione 6 bar assoluti / *Inlet pressure up to 6 bar absolute*
- N Buna (-10°C + 80°C) - Max pressione in Aspirazione 10 bar assoluti / *Inlet pressure up to 10 bar absolute*

2.5VGP..D - F0 S3 A0



Profondità 15mm filetto M10x1.25

M10x1.25 thread depth 15

Assemblaggio con 4 tiranti da M12 coppia di serraggio 75 Nm

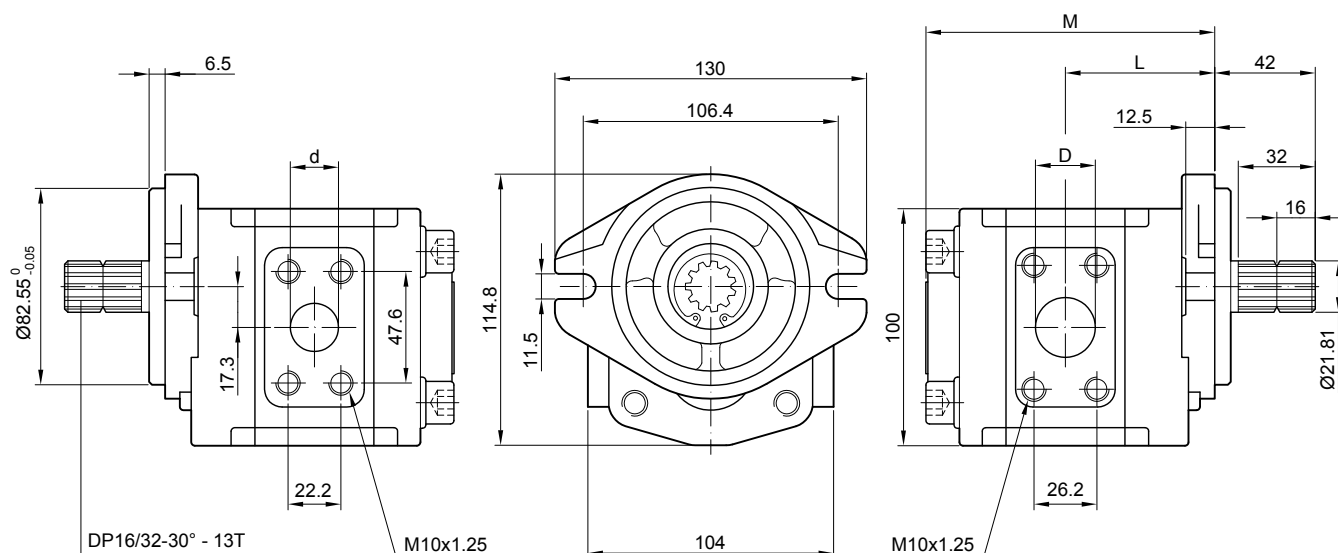
To mount the pump n.4xM12 screws with a torque wrench settings fixed at 75 Nm

Flangia anteriore e coperchio posteriore in alluminio, corpo in ghisa

Aluminium front flange and back cover, cast iron body

**MANDATA
OUTLET**

**ASPIRAZIONE
INLET**

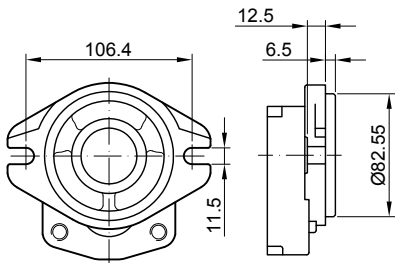


Tipo Type	Cilindrata Displacement (cm ³ /rev)	Pressione massima Max pressure			Velocità massima Max. speed (r/min)	Velocità minima Min. speed (r/min)	Dimensioni Dimensions			
		P1 bar	P2 bar	P3 bar			M mm	L mm	D mm	d mm
2.5VGP 23 D	23	230	250	260	3500	600	118	60.5	25	20
2.5VGP 25 D	25	230	250	260	3500	600	120	61.8	25	20
2.5VGP 26.5 D	26.5	230	250	260	3500	600	122	62.8	25	20
2.5VGP 28 D	28	230	250	260	3500	600	124	63.8	25	20
2.5VGP 30 D	30	230	250	260	3000	600	126	64.8	25	20
2.5VGP 32 D	32	200	230	250	3000	600	129	66.3	25	20
2.5VGP 36 D	36	200	230	250	2750	500	133	68.3	25	20
2.5VGP 40 D	40	160	180	200	2500	500	138	70.8	28	20

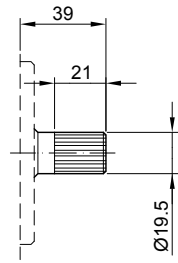
SERIE 2.5VGP - 2.5VGP SERIES

FLANGE / FRONT COVERS

ALBERI / SHAFTS



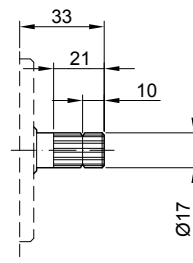
A0



EXT12Z-1.5m - 30°

S0

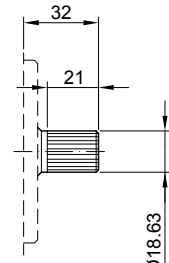
Coppia max 220 Nm
Max. torque 220 Nm



DP16/32-30° - 10T

S1

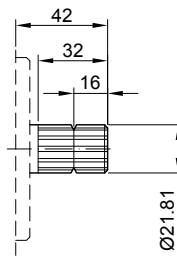
Coppia max 200 Nm
Max. torque 200 Nm



DP16/32-30° - 11T

S2

Coppia max 210 Nm
Max. torque 210 Nm



DP16/32-30° - 13T

S3

Coppia max 300 Nm
Max. torque 300 Nm

BOCCHE / PORTS

NOTA: BOCCHIE DISPONIBILE F0/F1; L0/L1 E Z0/Z1/Z2 (VEDI PAG. 5E)

NOTE: AVAILABLE PORTS F0/F1; L0/L1 AND Z0/Z1/Z2 (SEE PAG. 5E)