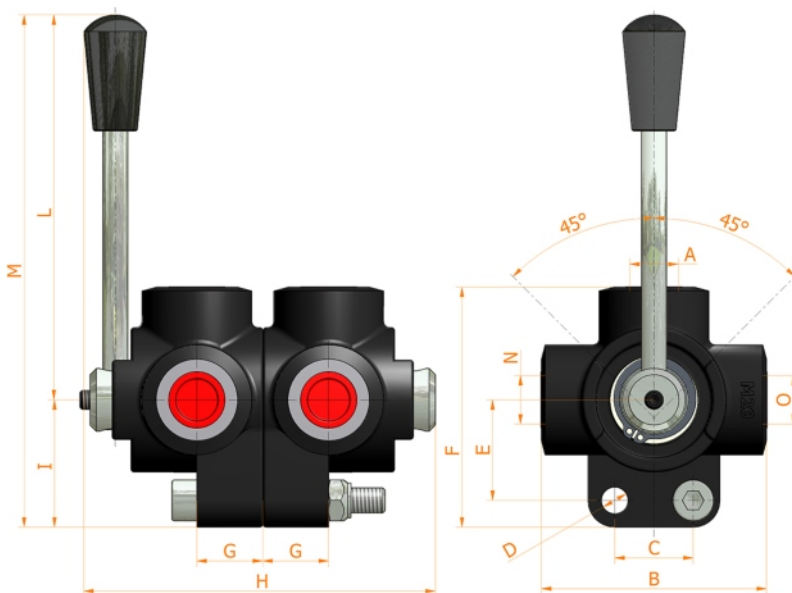
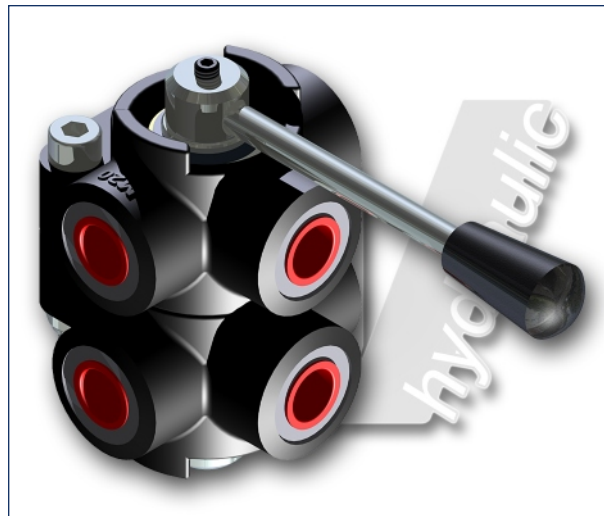
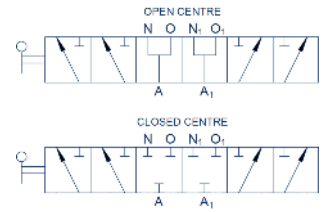


hydraulic diagram

D6 SAE

6 ways flow divider



Specifications:

- Iron cast body
- White zinc plated external parts
- Standard colour black

O-N-A SAE	FLOW liters/min	PRESSURE BAR	B mm	C mm	D mm	E mm	F mm	G mm	H mm	L mm	M mm	MASS KG	CODE OF OPEN CENTRE	CODE OF CLOSED CENTRE
3/4 - 16	60+60	350	70	25	8,5	32	75,5	21	112	115	155,5	1,500	7003.0200	7003.0207
7/8 - 14	90+90	350	80	32	8,5	36	86	24	124	115	161	2,300	7003.0201	7003.0208
1 1/16 - 12	120+120	350	90	32	10,5	42	98,5	26	132	115	168,5	3,500	7003.0202	7003.0209
1 5/16 - 12	200+200	300	98	32	10,5	50	110	31	152	115	176,5	5,300	7003.0203	7003.0210

HV Hydraulic S.r.l.

www.hvhydraulic.com - info@hvhydraulic.com

Via dell'Agricoltura, 162 - Loc. Castelletto di Serravalle - 40053 Valsamoggia (BO) Italy - Tel. +39 051 670.50.11 - Fax +39 051 670.53.74

© ALL RIGHTS RESERVED