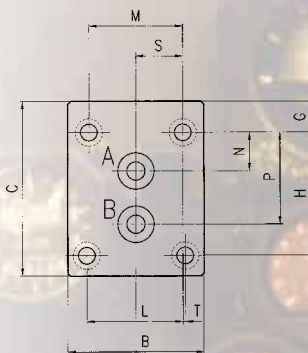
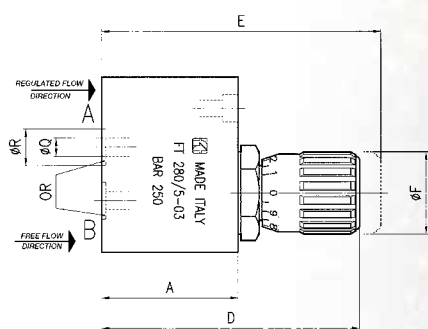




MATERIALS

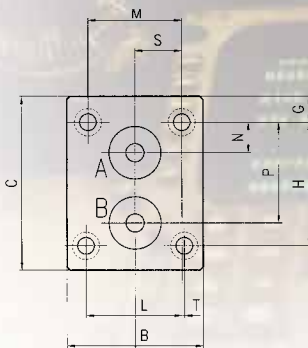
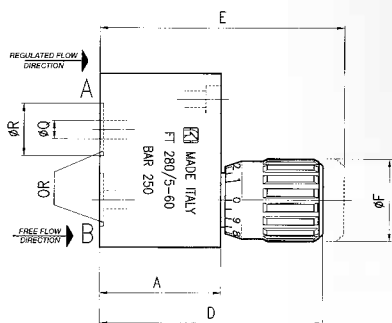
| | |
|---------------------|------------------------------------|
| TERMINAL STRIP BODY | 11 S MN Pb 30 - UNI EN 10087 |
| CARTRIDGE BODY | 11 S MN Pb 30 - UNI EN 10087 |
| NEEDLE | 1 C 40 - UNI 8373 |
| HANDWHEEL | GD AL SI 12 UNI EN AB 46100 |
| NIPPLE | NYLON 6 |
| GUIDE CAGE | NYLON 66 + CARBON FIBRE |
| BALL | STAINLESS STEEL - UNI 100 C 6 |
| SPRING | STEEL INOX AISI 302 |
| PLUG | STEEL 35 S MN Pb 10 - UNI EN 10087 |
| OR | NITRILE |
| ANTIEXTRUSION RING | PTFE |
| OBTURATOR | STEEL C 15 Pb |

All components are surface treated and protected



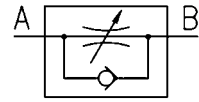
DIMENSIONS

| TYPE | A | B | C | D | E | ∅F | G | H | L | M | N | P | ∅Q | ∅R | S | T | OR | SCREW | WEIGHT KG |
|------|----|----|------|------|------|----|------|------|-------|----|------|------|----|----|------|------|-----|-------|--------------|
| 03 | 45 | 45 | 57,5 | 85,3 | 92,3 | 27 | 10,3 | 40,5 | 31,75 | 31 | 12,7 | 30,2 | 6 | 12 | 15,5 | 0,75 | 108 | M5x50 | 0,885 |



DIMENSIONS

| TYPE | A | B | C | D | E | ∅F | G | H | L | M | N | P | ∅Q | ∅R | S | T | OR | SCREW | WEIGHT KG |
|------|----|----|----|------|------|----|-----|------|-------|----|----|----|----|------|------|------|------|-------|--------------|
| 60 | 45 | 45 | 57 | 73,8 | 80,8 | 27 | 8,5 | 40,5 | 31,75 | 31 | 10 | 33 | 6 | 17,2 | 15,5 | 0,75 | 2056 | M5x45 | 0,785 |



SINGLE-ACTING CONTROL PLATE VALVES

They control and eventually shut-off the flow in one direction, allowing a free return in the opposed direction. The suitable dimensions allow to obtain in reduced spaces a remarkable mechanical resistance of components.

As all valves pertaining to series FT 257 they ensure:

- efficient metallic sealing;
- flow linearity during opening;
- accurate flow control, made well visible by the double reference device;
- wide control range of specific flow rate;
- absolute safety against needle withdrawal also in the maximum opening position;
- positioning stability, thanks to the dowel inserted in knob.

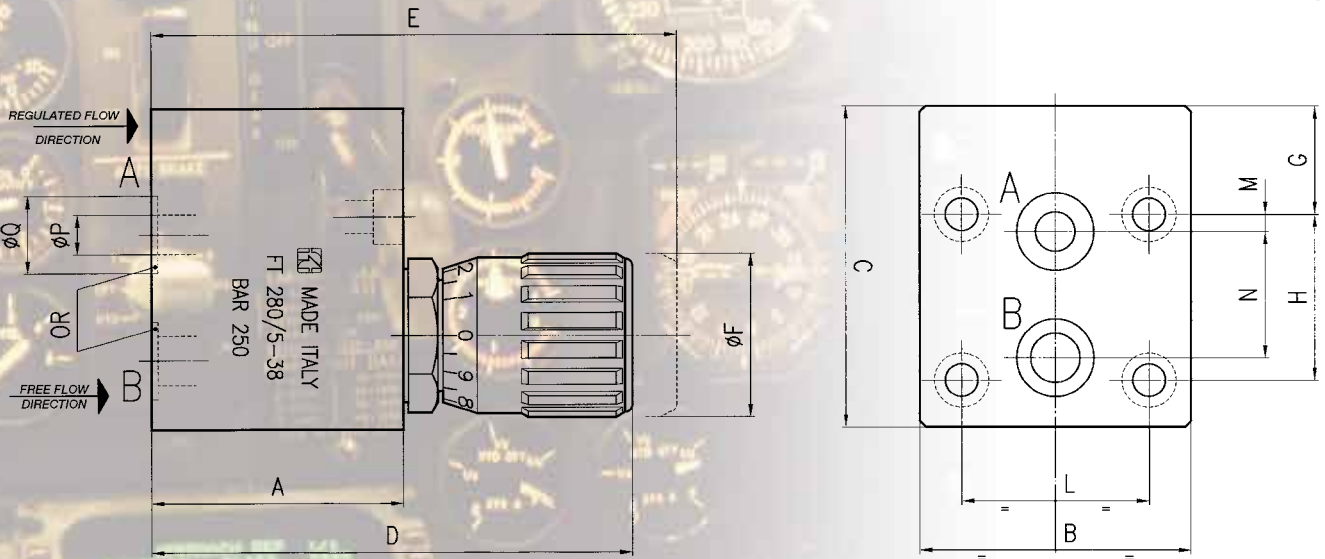
They are provided with plate connections mod. CETOP 03 or interchangeable with the broadly used valves. The connection seals are equipped in series. Max. working pressure 250 bar.

On request

- Complete with Viton seals (V)
- Knob in ABS (mp)



FT 280/5



DIMENSIONS

| TYPE | A | B | C | D | E | ØF | G | H | L | M | N | ØP | ØQ | OR | SCREW | WEIGHT KG |
|------|----|----|------|-------|-------|----|------|------|------|-----|------|----|------|------|-------|-----------|
| 14 | 45 | 50 | 60,5 | 85,3 | 92,3 | 27 | 18 | 35 | 33,5 | 5 | 25,5 | 6 | 12,7 | 2037 | M6x50 | 1,020 |
| 38 | 51 | 55 | 65 | 97,5 | 106,5 | 33 | 22 | 33,5 | 38 | 3,5 | 25,5 | 8 | 15,7 | 2050 | M6x55 | 1,380 |
| 12 | 65 | 65 | 82,5 | 119,1 | 129,6 | 38 | 30,5 | 38 | 44,5 | 4 | 30 | 11 | 19,7 | 119 | M6x70 | 2.620 |

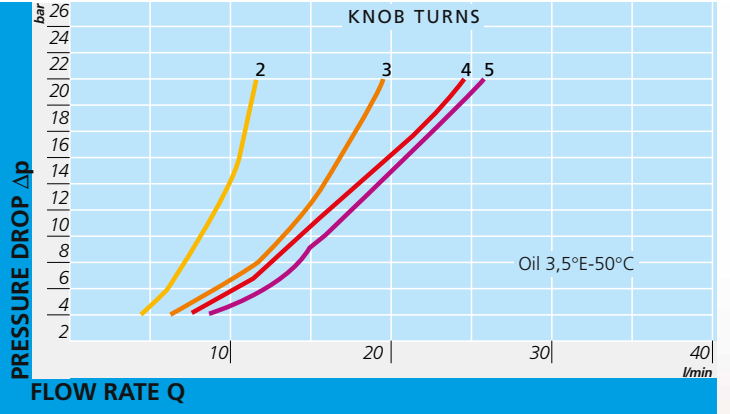
EXAMPLE FOR ORDERING

| CODE | TYPE |
|----------|------|
| FT 280/5 | 14 |

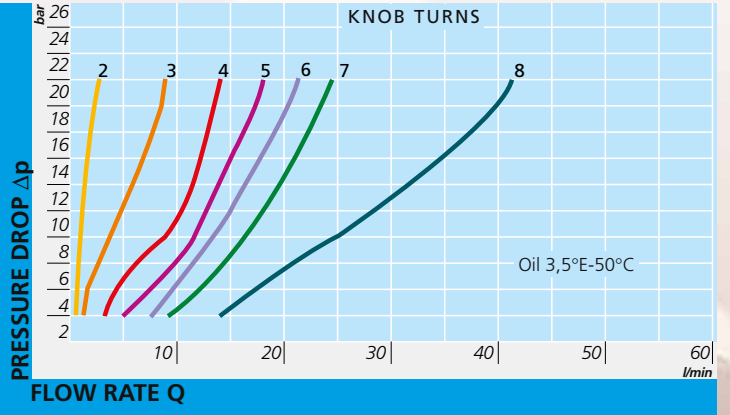


FT 280/5 FLOW RATE CURVES

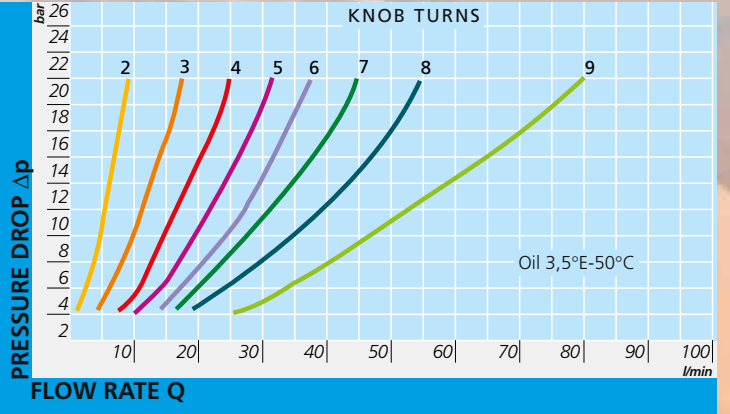
FT 280/5 - 14



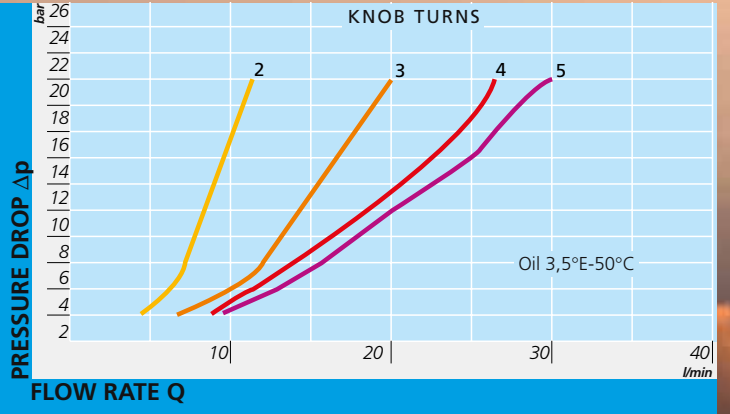
FT 280/5 - 38



FT 280/5 - 12



FT 280/5 - 03



CONTROL FLOW PLATE VALVES



FT 280/5

