
MATERIALS

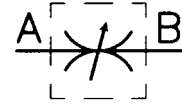
BODY	11 S MN PB 30 - UNI EN 10087
NEEDLE	1 C 40 - UNI 8373
OR	NITRILE
ANTIEXTRUSION RING	PTFE
KNOB	GD AL SI 12 - UNI EN AB 46100
KNOB (MP)	ABS

EXAMPLE FOR ORDERING

	CODE	TYPE	VITON SEAL	PLASTIC KNOB
STEEL	FT 267/2	38	V	MP
STAINLESS STEEL	FT 2267/2	12	-	MP


DIMENSIONS

TYPE	A	ϕB	C	D	E	ϕF	$\phi F1$	G	H	L	CH	WEIGHT KG
18	M15x1	12	9,3	11,2	20,5	22	40	35	55,5	5	22	0,064
14	M20x1,5	14	11	15,5	26,5	27	50	42,5	68,5	7	27	0,125
38	M20x1,5	16	13	17,5	30,5	33	70	48,5	78,5	9	27	0,180
12	M27x2	19	15,5	24,5	40	38	80	56	96	10,5	32	0,305
34	M33x2	27	18	26	44	47	100	63,5	109	13	41	0,580
100	M42x2	35	22	30,5	52,5	58	120	82	134,5	20	50	1,185



THREADED CARTRIDGE MOUNTED DOUBLE-ACTING CONTROL VALVES

They allow for regulation of flow in both directions.

On request

- Version AISI 316 Code FT 2267/2
- Complete with Viton seals (V)
- Knob in ABS (mp)
- Lobes aluminium die-cast handwheel (RA)



FT 267/2

TECHNICAL DATA

TIPO	TYPE FLOW SECTION CM ²	MAX. WORKING PRESSURE BAR	MIN. BURSTING PRESSURE BAR	WORKING TEMPERATURE °C	FILTRATION GRADE μM ABSOLUTE
18	0,12	320	1300	-20°/+100°	25
14	0,19	320	1300	-20°/+100°	25
38	0,39	320	1300	-20°/+100°	25
12	0,68	320	1300	-20°/+100°	25
34	1,13	320	1300	-20°/+100°	25
100	2,09	320	1300	-20°/+100°	25

SEAL KIT ON THE NEEDLE

TYPE	OR	BK
18	2018	2018
14	2021	2021
38	108	108
12	2043	2043
34	115	115
100	123	123

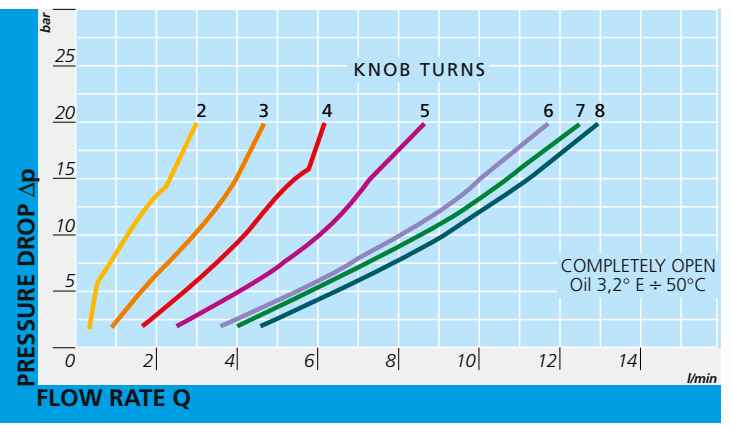
SEAL KIT ON THE SEATING

TYPE	1 (OR)	2 (BK)
18	108	267/2-022.00.1-18
14	2043	267/2-022.00.1-14
38	2050	267/2-022.00.1-38
12	2062	267/2-022.00.1-12
34	130	267/2-022.00.1-34
100	3118	267/5-022.00.1-34

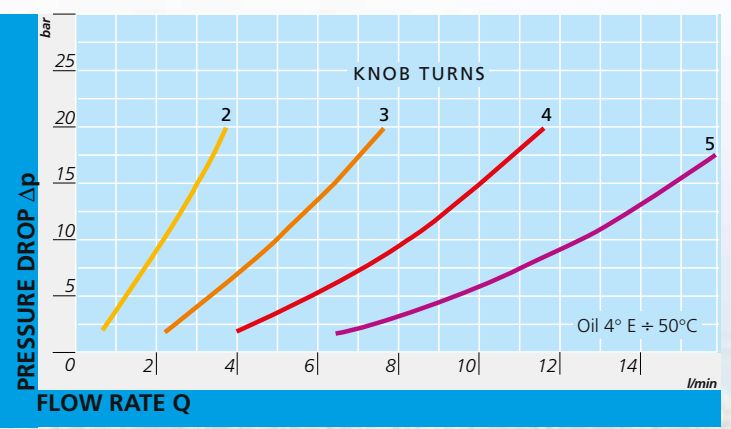


FT 267/2

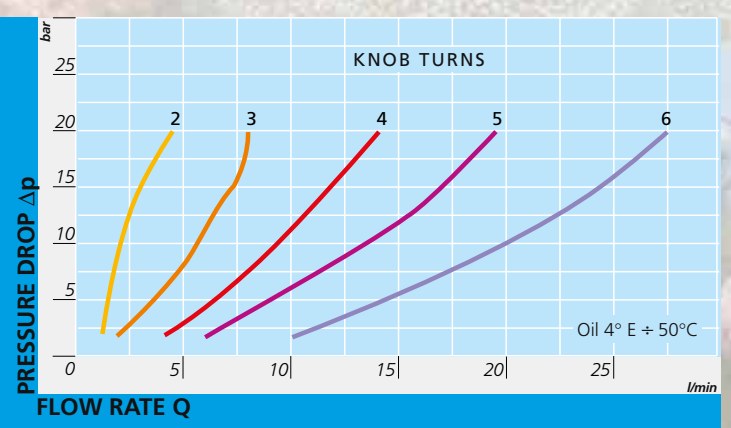
FT 267/2 - 18



FT 267/2 - 14



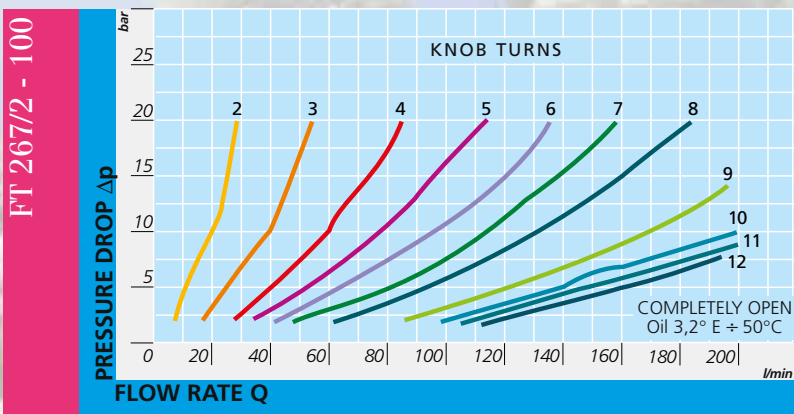
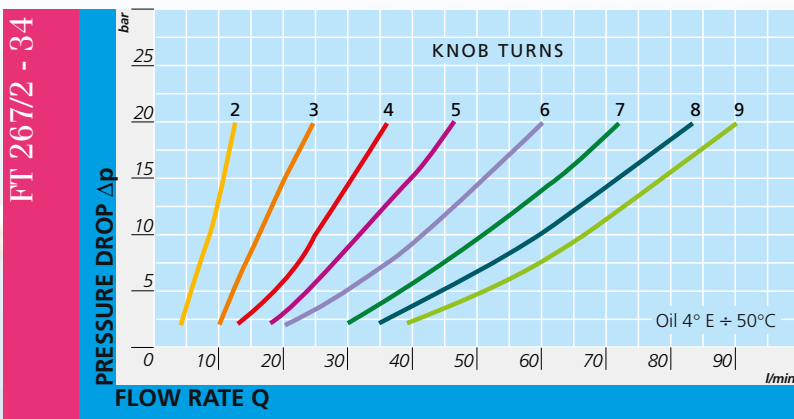
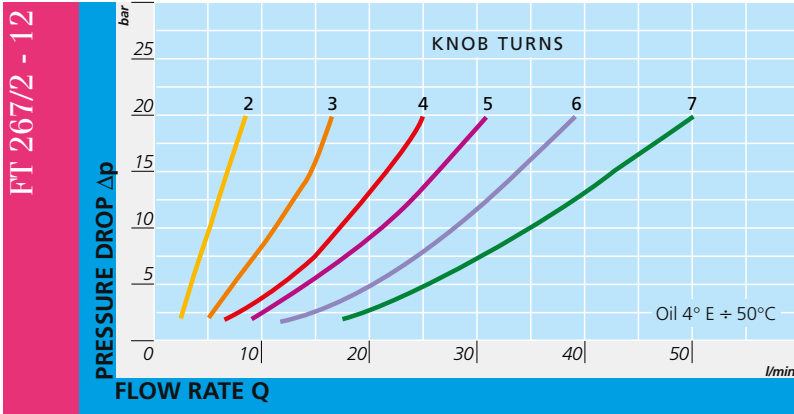
FT 267/2 - 38



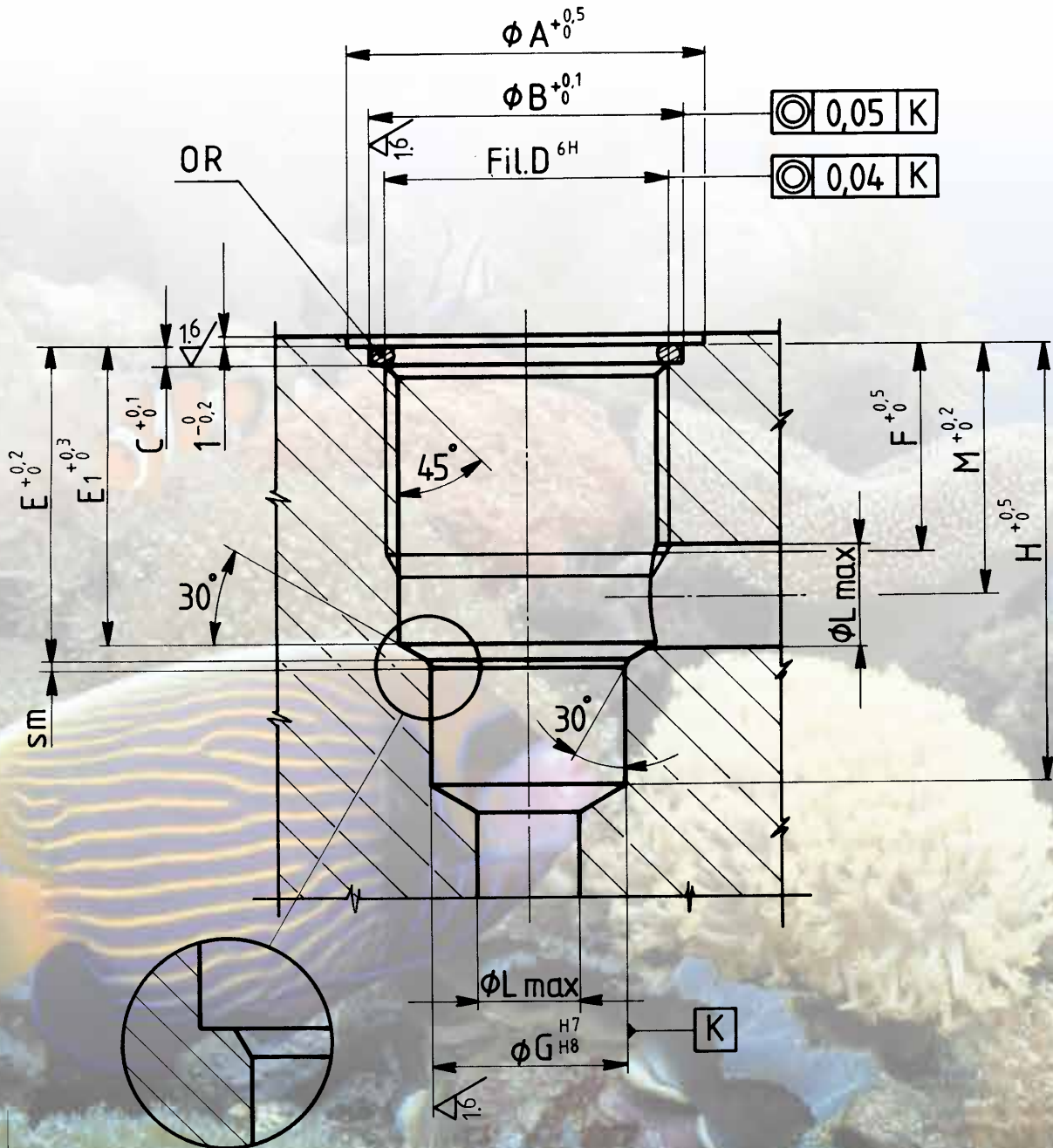
FLOW RATE CURVES



FT 267/2



Sealing realized with OR seals on flat seating



Manufacturing detail possible in alternative to the conic seat removing the quote E1

SEATING MACHINING DRAWINGS FOR THREADED CARTRIDGE MOUNTED VALVES



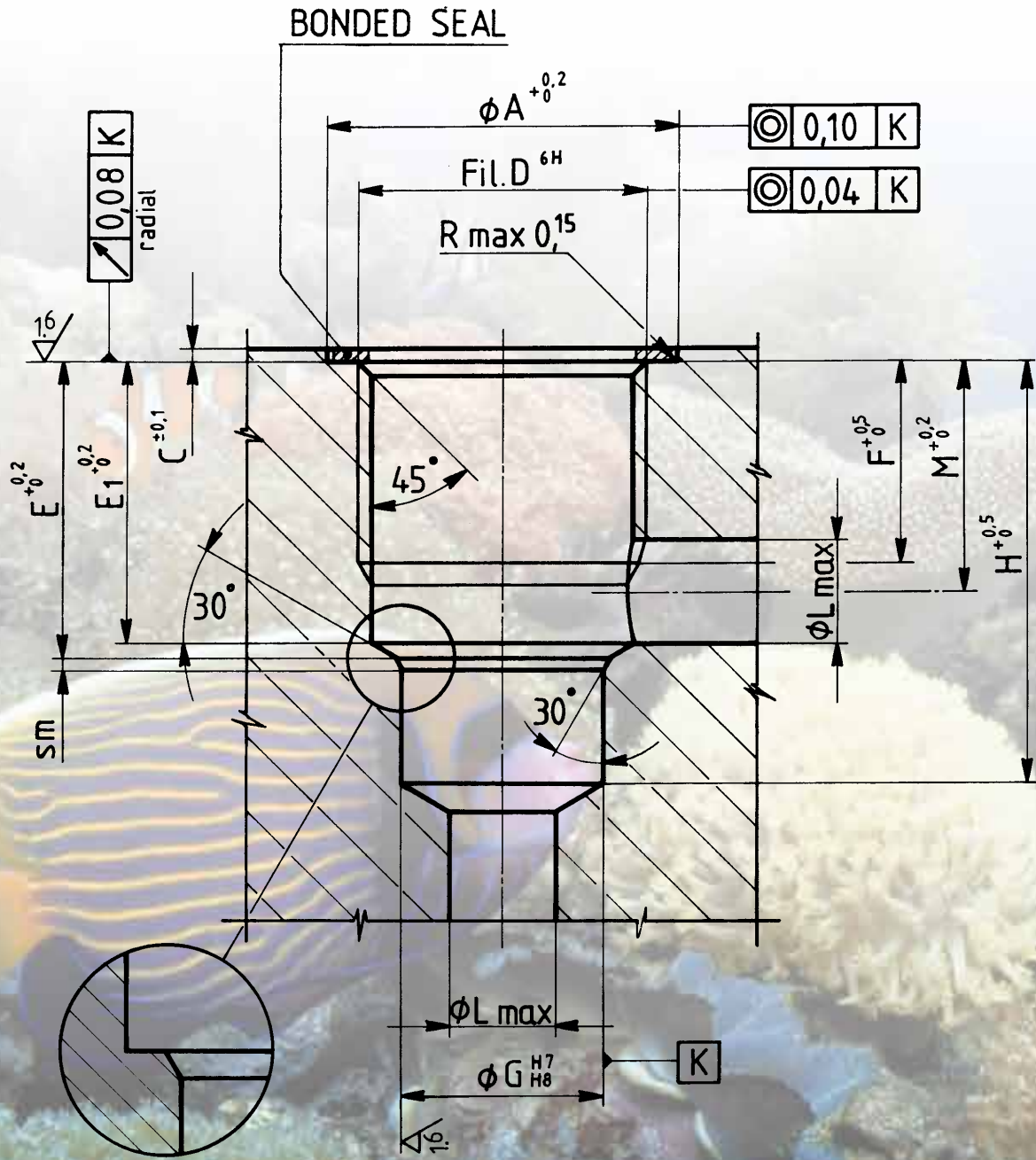
FT 247/2 - FT 267/2 - FT 267/5

FLAT SEATING FOR OR - FT 247/2 - 267/2

TYPE	ØA	ØB	C	D UNI 4534	E	E1	F	ØG	H	ØL	M	SM	OR
18	23	19	2	M15x1	14	13	11	12	21,5	4	11,5	0,5	3056
14	28	24	2	M20x1,5	17,5	16,5	13,5	14	28,5	5	14,5	1	3075
38	28	24	2	M20x1,5	21	20,5	13,5	16	33,5	8	16,2	1,2	3075
12	34	30	2	M27x2	30	28,5	20	19	43	10	24	1,2	3100
34	43	36	2	M33x2	32,5	32	20	27	47,5	13	25	1,2	3125
100	60	45	2	M42x2	38,5	37	23,5	35	57	16	30,5	1,5	3162

FLAT SEATING FOR OR - FT 267/5

TYPE	ØA	ØB	C	D UNI 4534	E	E1	F	ØG	H	ØL	M	SM	OR
14	28	24	2	M20x1,5	21	20,5	13,5	16	33,5	8	16,2	1	3075
38	34	30	2	M27x2	30	28,5	20	19	43	10	24	1,2	3100
12	43	36	2	M33x2	32,5	32	20	27	47,5	12	25,5	1,2	3125
34	60	45	2	M42x2	38,5	37	23,5	35	57	16	30,5	1,5	3162
100	61	55	2,2	M52x2	46	45	27	45	67,5	20	34,5	1,5	3200



Manufacturing detail possible in alternative to the conic seat removing the quote E1

SEATING MACHINING DRAWINGS FOR THREADED CARTRIDGE MOUNTED VALVES



FT 247/2 - FT 267/2 - FT 267/5

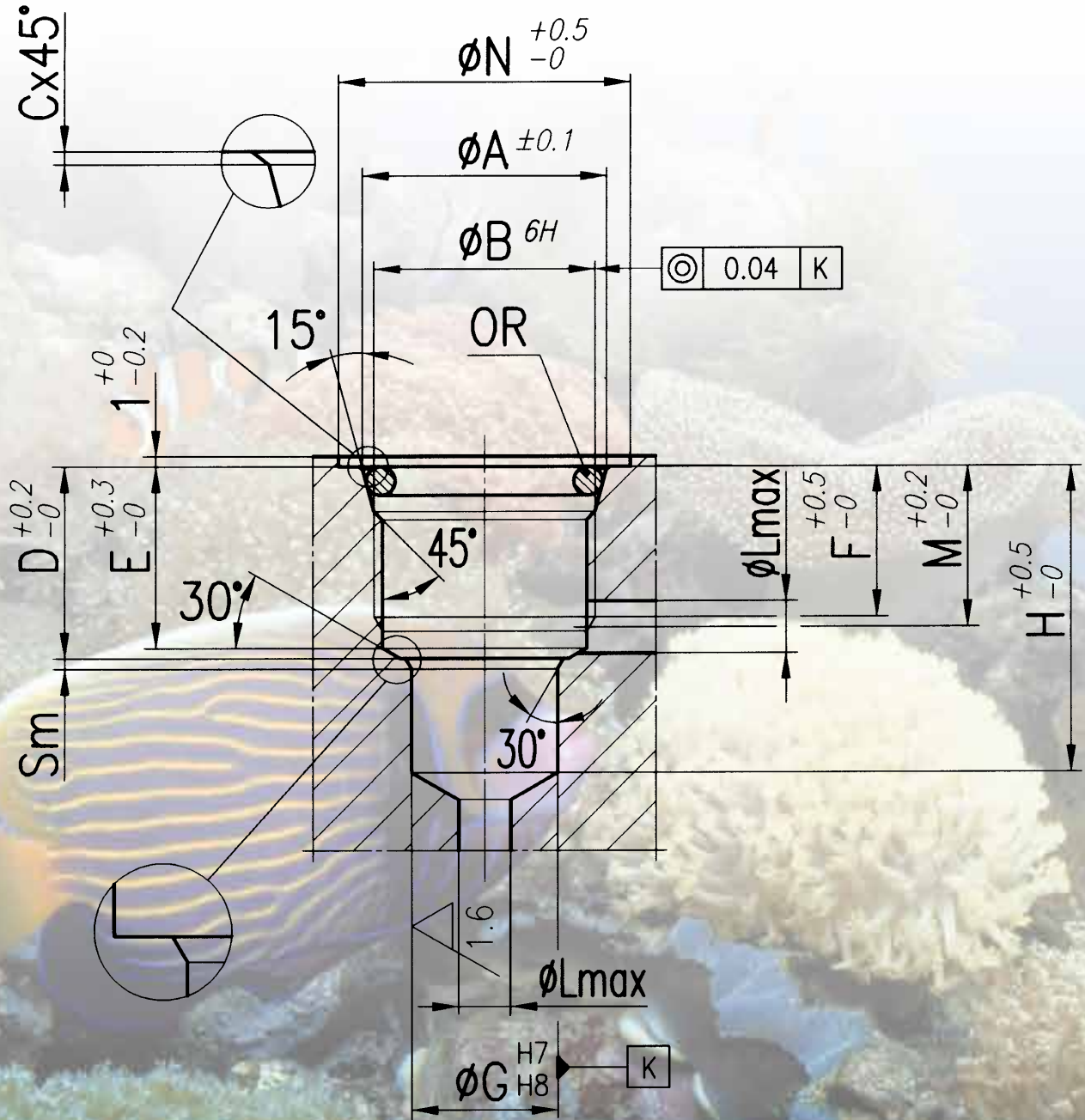
SEATING FOR BONDED SEAL - FT 247/2 - 267/2

TYPE	ØA	C	D UNI 4534	E	E1	F	ØG	H	ØL	M	SM	BONDED SEAL
18	23	1	M15x1	13	12	9	12	20	4	10,3	0,5	400-512
14	27	1	M20x1,5	16,5	15,5	12	14	27	5	13,3	1	400-513
38	27	1	M20x1,5	20	19,5	12	16	32	8	15,2	1,2	400-513
12	33	1,3	M27x2	28	26,5	18	19	41	10	22	1,2	400-520
34	40	1,3	M33x2	30,5	30	18	27	45,5	13	23	1,2	400-515
100	50	1,3	M42x2	36,5	35	21,5	35	55	16	28,5	1,5	400-516

SEATING FOR BONDED SEAL - FT 267/5

TYPE	ØA	C	D UNI 4534	E	E1	F	ØG	H	ØL	M	SM	BONDED SEAL
14	27	1	M20x1,5	20	19,5	12	16	32	8	15,2	1	400-513
38	33	1,3	M27x2	28	26,5	18	19	41	10	22	1,2	400-520
12	40	1,3	M33x2	30,5	30	18	27	45,5	12	23	1,2	400-515
34	50	1,3	M42x2	36,5	35	21,5	35	55	16	28,5	1,5	400-516

Sealing realized with OR seals on conical seating



Manufacturing detail possible in alternative to the conic seat removing the quote E

SEATING MACHINING DRAWINGS FOR THREADED CARTRIDGE MOUNTED VALVES



FT 247/2 - FT 267/2 - FT 267/5

CONICAL SEATING FOR OR - FT 247/2 - FT 267/2

TYPE	ØA	ØB UNI 4534	C	D	E	F	ØG	H	ØL	M	ØN	SM	OR
18	16,5	M15x1	0,25	14	13	11	12	21,5	4	11,5	23	0,5	2050
14	22,3	M20x1,5	0,25	17,5	16,5	13,5	14	28,5	5	14,5	28	1	3068
38	22,3	M20x1,5	0,25	21	20,5	13,5	16	33,5	8	16,2	28	1,2	3068
12	29,1	M27x2	0,3	30	28,5	20	19	43	10	24	34	1,2	132
34	36	M33x2	0,3	32,5	32	20	27	47,5	13	24	43	1,2	4112
100	45	M42x2	0,3	38,5	37	23,5	35	57	16	29	60	1,5	4150

CONICAL SEATING FOR OR - FT 267/5

TYPE	ØA	ØB UNI4534	C	D	E	F	ØG	H	ØL	M	ØN	SM	OR
14	22,3	M20x1,5	0,25	21	20,5	13,5	16	33,5	8	16,2	28	1,2	3068
38	29,1	M27x2	0,3	30	28,5	20	19	43	10	24	34	1,2	132
12	36	M33x2	0,3	32,5	32	20	27	47,5	13	25	43	1,2	4112
34	45	M42x2	0,3	38,5	37	23,5	35	57	16	29	60	1,5	4150
100	55	M52x2	0,3	46	45	27	45	67,5	20	34,5	61	1,5	4187