



FT 1247/2

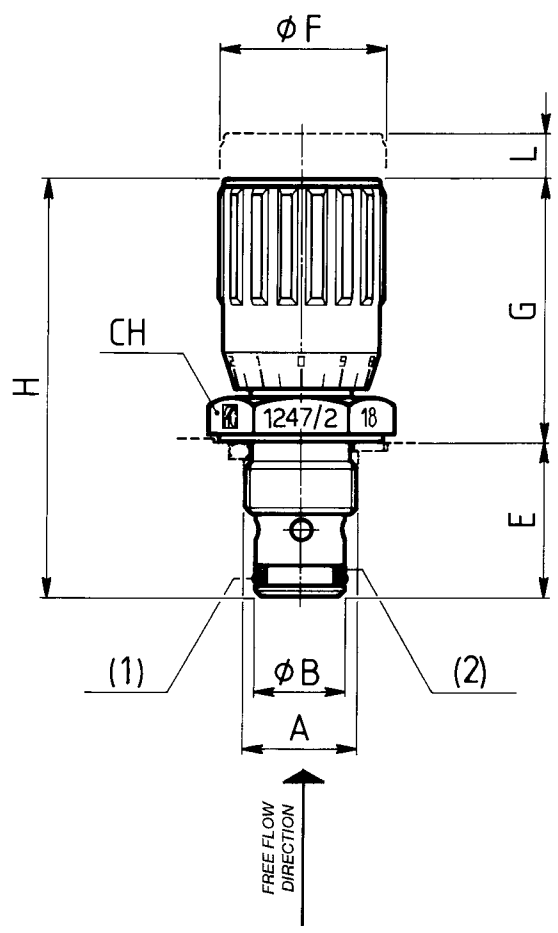


**MATERIALS**

BODY	DT 58 - UNI 5705 - BLACK CHROMIUM PLATING
NEEDLE	X 10 CR NI S 1809 - UNI EN 10088
OR	NITRILE
ANTIEXTRUSION RING	PTFE
KNOB	GD AL SI 12 - UNI EN AB 46100

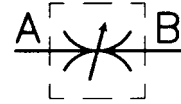
**EXAMPLE FOR ORDERING**

	CODE	TYPE	VITON SEAL
BRASS	FT 1247/2	18	V
STAINLESS STEEL	FT 2247/2	18	-



**DIMENSIONS**

TYPE	UNI <sup>A</sup> 4534	ØB	E	ØF	G	H	L	CH	WEIGHT KG	(1)OR	(2)BK
18	M15x1	12	20,5	22	34,5	55	8	22	0,069	108	108



# FT 1247/2

## DOUBLE-ACTING CARTRIDGE MOUNTED FINE CONTROL VALVES

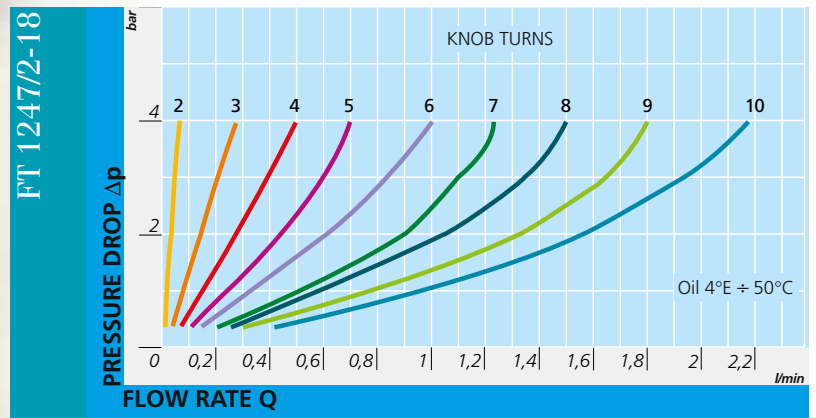
It is the solution for application requiring special adjustment of small flow rates. For both hydraulic-pneumatic applications with flow rate up to max. 3 l/min. They can be used also with fluids different from oil, such as: gas and liquids in general.

This version has the same characteristics as the series FT 1250 and it maintains its main characteristics:

- metallic sealing;
- provision for panel mounting;
- security against accidental needle withdrawal.

### On request

- Version AISI 316 Code FT 2247/2



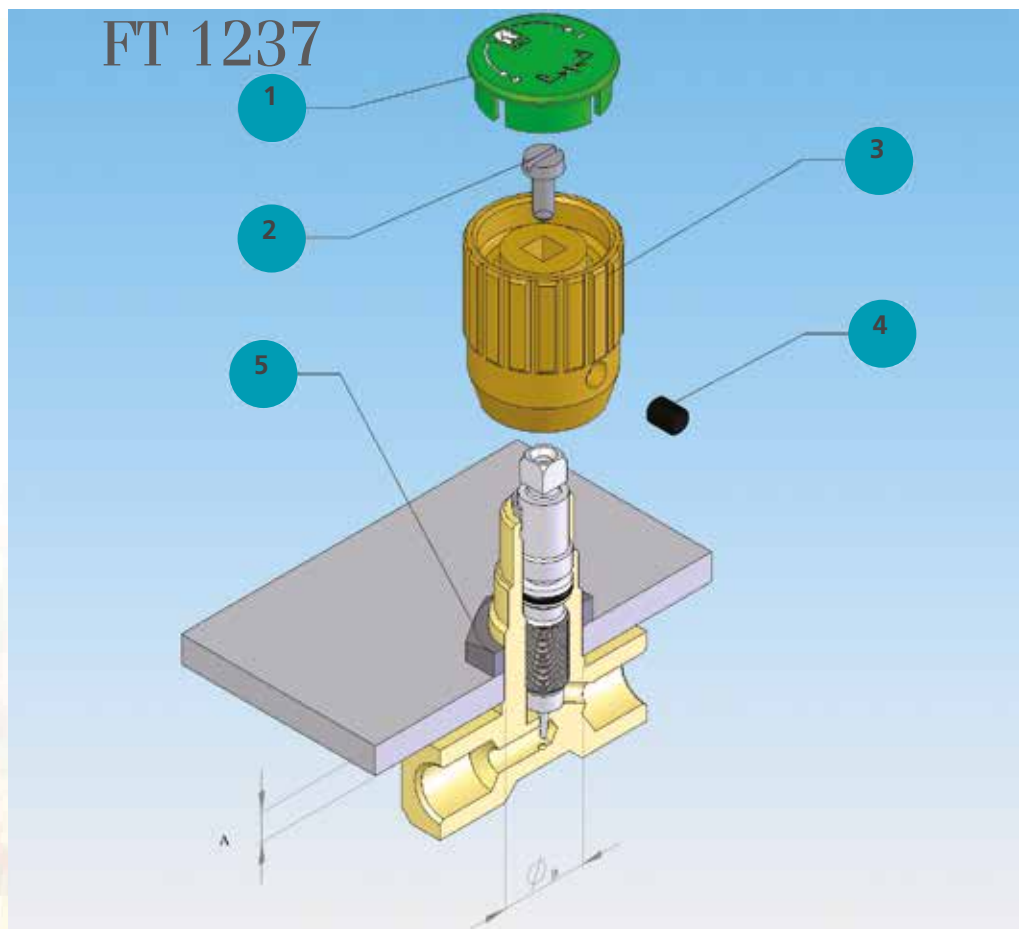
## TECHNICAL DATA

TYPE	FLOW SQ MM <sup>2</sup>	MAX WORKING PRESSURE BAR	WORKING TEMPERATURE °C	FILTRATION GRADE μM
18	3,14	210	-20°/+100°	25

# ASSEMBLY INSTRUCTIONS



FT 267/5



## PANEL MOUNTING

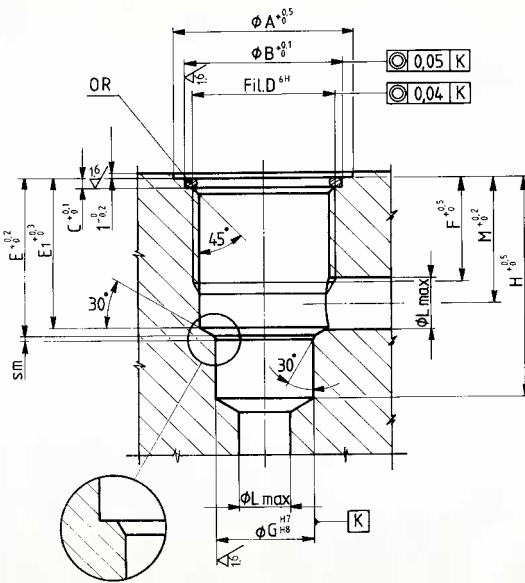
1°	UNSCREW THE LOCK SCREW (4)
2°	REMOVE COVER PLATE (1)
3°	REMOVE SCREW (2)
4°	PULL OFF KNOB (3)
5°	INSERT RING NUT (5), ON REQUEST IT IS SUPPLIED WITH THE VALVE

TYPE VALVE	THICKNESS PANEL A MAX	PANEL ORIFICE $\varnothing B$
18	5	16

# SEATING MACHINING DRAWINGS FOR FT 1247/2 CARTRIDGE VALVE

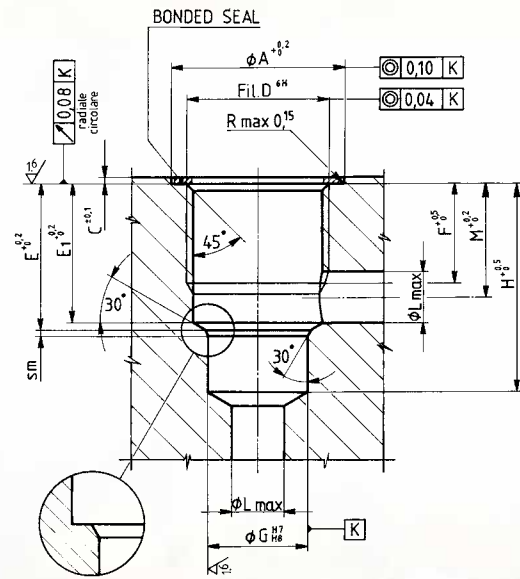


SERIE FT 1247/2



Detail of machining which may be executed in alternative to the conical one, eliminating dimension E1

**FLAT SEA**



Detail of machining which may be executed in alternative to the conical one, eliminating dimension E1

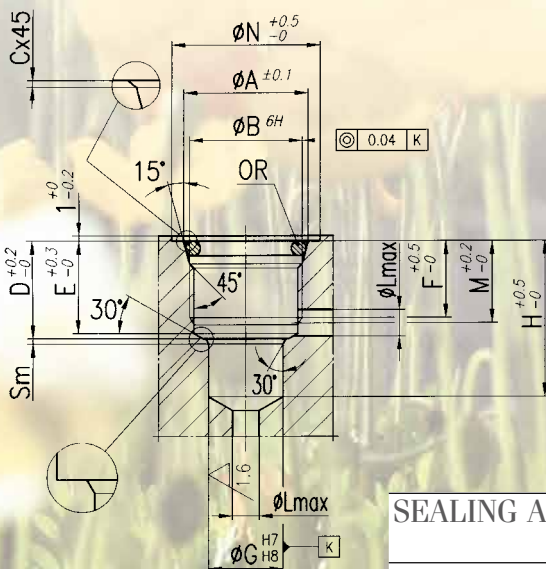
**BONDED SEAL**

## SEALING ACHIEVED WITH O-RING ON FLAT SEAT

TYPE	$\phi A$	$\phi B$	C	UNI D 4534	E	E1	F	$\phi G$	H	$\phi L$	M	SM	OR
18	23	19	2	M15x1	14	13	11	12	21,5	4	11,5	0,5	3056

## SEALING ACHIEVED BY BONDED SEALS

TYPE	$\phi A$	C	UNI D 4534	E	E1	F	$\phi G$	H	$\phi L$	M	SM	BONDED SEAL
18	23	1	M15x1	13	12	9	12	20	4	10,3	0,5	400-512



## SEALING ACHIEVED WITH O-RING ON CONICAL SEAT

TIPO	$\phi A$	UNI B 4534	C	D	E	F	$\phi G$	H	$\phi L$	M	SM	OR
18	16,2	M15x1	0,25	14	13	11	12	21,5	4	11,5	0,5	205

### CONICAL SEAT

Detail of machining which may be executed in alternative to the conical one, eliminating dimension E