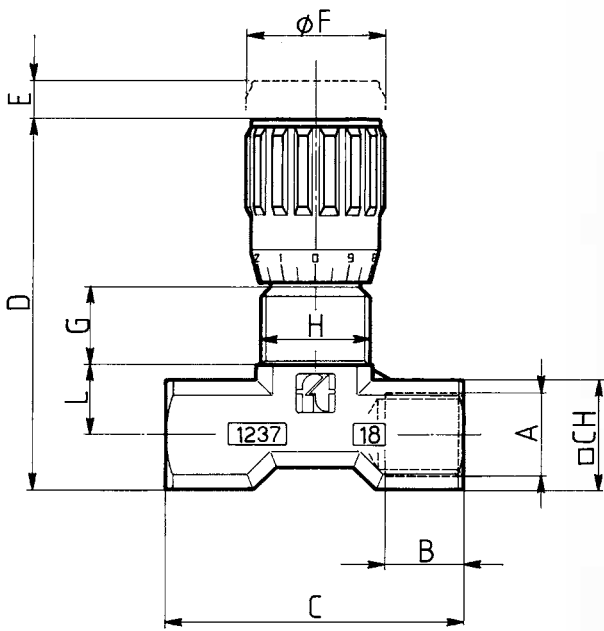



MATERIALS

| | |
|--------------------|---|
| BODY | OT 58 - UNI 5705 - BLACK CHROMIUM PLATING |
| NEEDLE | X 10 CR NI S 1809 - UNI EN 10088 |
| OR | NITRILE |
| ANTIEXTRUSION RING | PTFE |
| KNOB | GD AL SI 12 - UNI EN AB 46100 |

EXAMPLE FOR ORDERING

| | CODE | TYPE | PANEL RING NUT | VITON SEAL |
|-----------------|-----------|------|----------------|------------|
| BRASS | FT 1237/2 | 18 | G | V |
| STAINLESS STEEL | FT 2237/2 | 18 | G | - |


DIMENSIONS

| TYPE | A UNI 338 | B | C | D | E | ØF | G | H | L | □ CH | WEIGHT KG |
|------|--------------|---|----|----|---|----|----|-------|-----|------|--------------|
| 18 | 1/8" G | 8 | 40 | 55 | 4 | 22 | 12 | M15x1 | 9,5 | 15 | 0,105 |



DOUBLE-ACTING FINE CONTROL VALVES IN LINE

It is the solution for application requiring special adjustment of small flow rates. For both hydraulic-pneumatic applications with flow rate up to max. 3 l/min. They can be used also with fluids different from oil, such as: gas and liquids in general.

This version has the same characteristics as the series FT 1250 and it maintains its main characteristics:

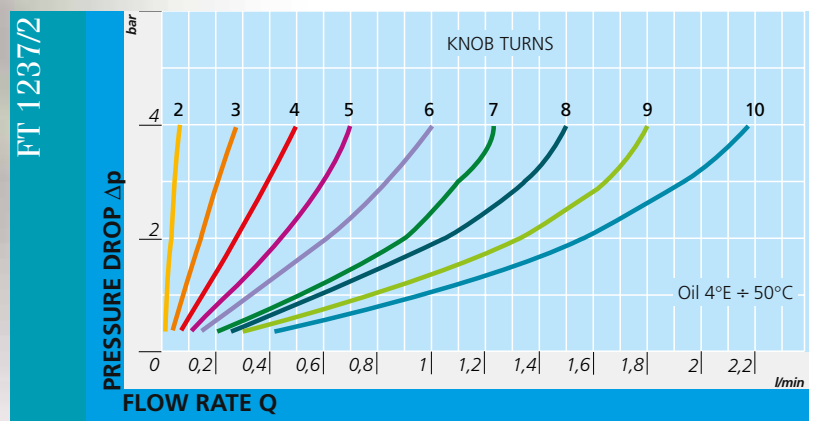
- metallic sealing;
- provision for panel mounting;
- security against accidental needle withdrawal.

On request

- NPT threads
- Viton (V) seals
- Version in AISI 316 FT 2237/2



FT 1237/2



TECHNICAL DATA

| TYPE | FLOW SQ MM ² | MAX WORKING PRESSURE BAR | WORKING TEMPERATURE °C | FILTRATION GRADE μM |
|------|-------------------------|--------------------------|------------------------|---------------------|
| 18 | 3,14 | 210 | -20°/+100° | 25 |