

FT2260/6



IN LINE SINGLE-ACTING VALVES (BALL)

They are inserted in branches of the circuit where the free flow in one direction is allowed and the return flow in the opposite direction is not possible. The single-acting valves (in line) are of ball type with alignment guide made of composite high resistance material which allows a total passage and a great breaking strength and wear resistance. All this has been confirmed by numerous tests. The soft seal implemented through a special material sealing eliminates every leakage with the use of gas or liquid in general.

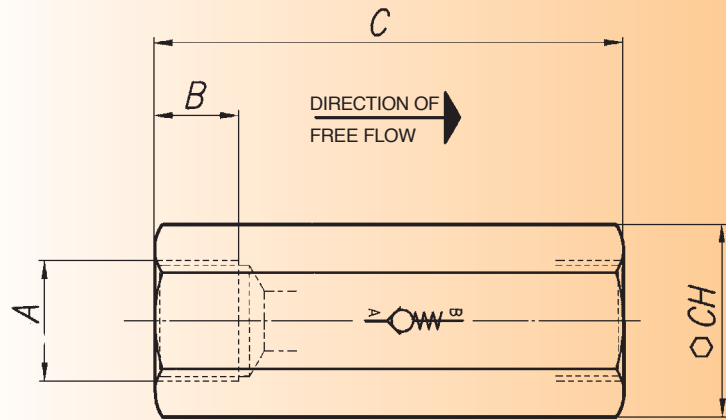
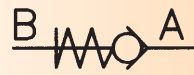


materials

Body	AISI 316 stainless steel
Spring	AISI 316 stainless steel
Ball	UNI 100 C 6
Ball guide	Nylon 66 + fibra carbonio
Soft seal	HPU

example for ordering

Code	Type
FT 2260/6	14

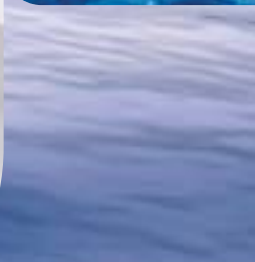


dimensions

Type	A UNI 338	B	C	CH	Weight kg
18	1/8"G	8,5	41	16	0,054
14	1/4"G	12,5	54	19	0,089
38	3/8"G	13	65	24	0,175
12	1/2"G	16	77	30	0,310
34	3/4"G	20	88	36	0,450
100	1"G	23	108,5	46	0,965

technical data

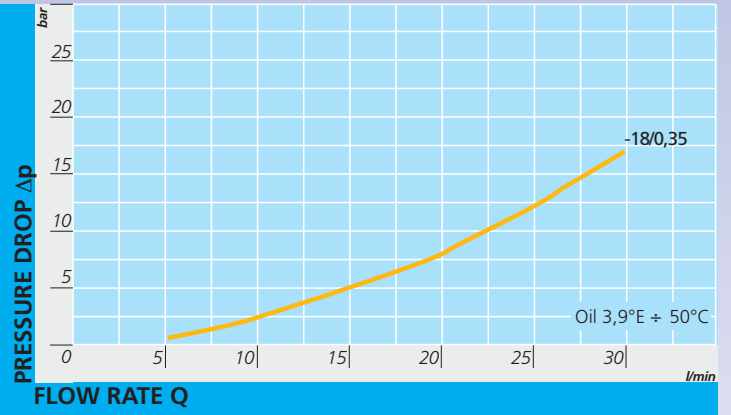
Type	Working pressure bar	Working temp. °C	Filtration grade µm absolute
18	350	-20° / +120°C	25
14	350	-20° / +120°C	25
38	350	-20° / +120°C	25
12	350	-20° / +120°C	25
34	350	-20° / +120°C	25
100	320	-20° / +120°C	25



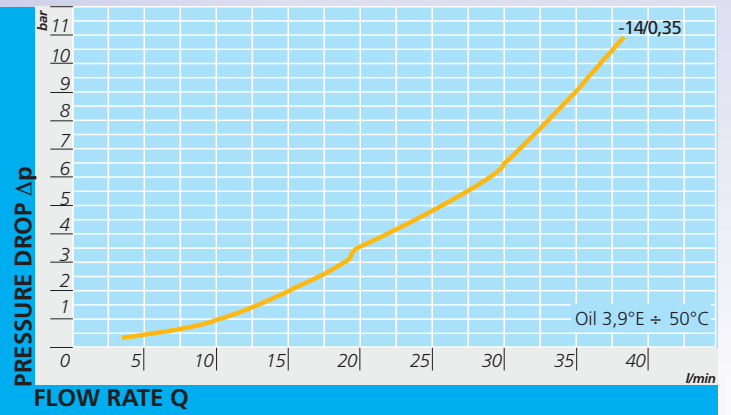
flowrate



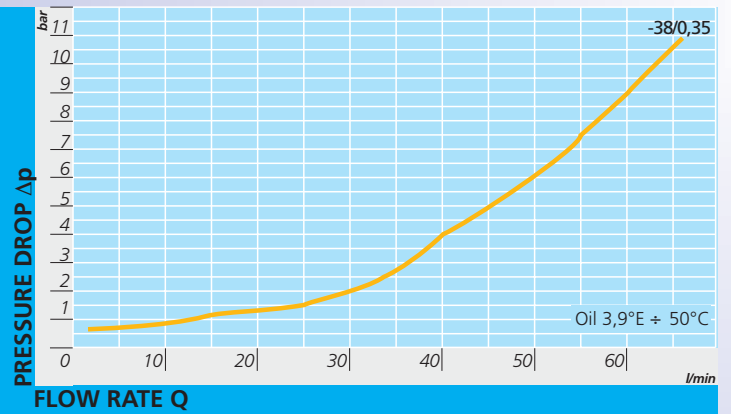
FT 2260/6 - 18



FT 2260/6 - 14

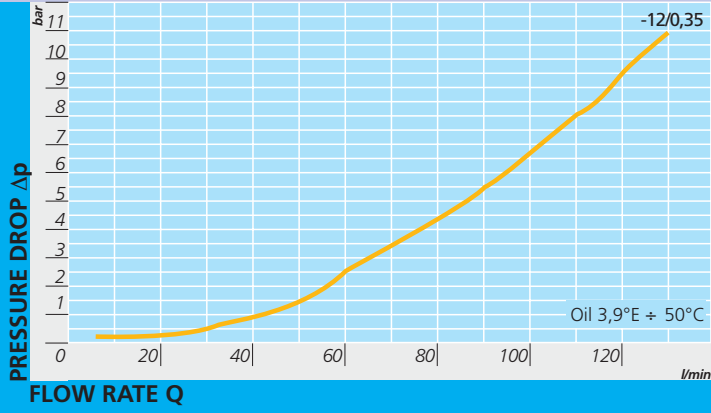


FT 2260/6 - 38

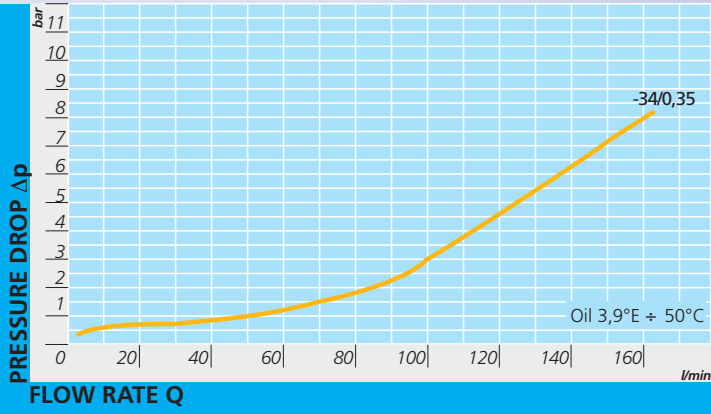


curves

FT 2260/6 - 12



FT 2260/6 - 34



FT 2260/6 - 100

