

FT2257/5



IN LINE SINGLE-ACTING CONTROL VALVES

Their function is to control and, if necessary, to shut-off the flow in one direction, allowing a free return flow in the opposite direction. Appreciated for their aesthetic characteristics, they are a reliable solution. The suitable dimensioning has made possible to obtain, in a little space, a great mechanic resistance of the components. The spring in high-resistance material is housed in such a way that it does not close as a pack during the opening of the single-acting conical valve poppet.

Like all the valves of the series FT 2257 they ensure:

- metallic seal;
 - flow linearity at the opening;
 - accurate control for a wide range of flow rate, thanks to the double reference system
 - wide range of the flow rate control;
 - impossibility for the needle to leave its seat even in the max. opening position;
 - stable positioning thanks to a dowel inside the knob;
 - quickness in the assembling of the panel (the ring nuts (G) are supplied on request).
- The check valve is calibrated at 0,5 bar.

On request

- NPT threads
- Equipped with ring nuts (G)
- Knob in ABS (mp)

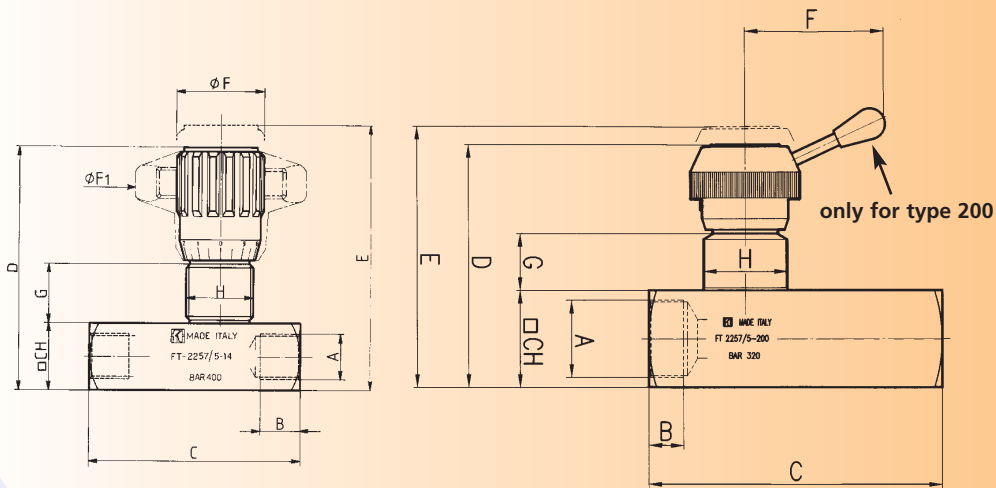
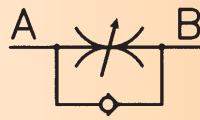


materials

Body	AISI 316 stainless steel
Needle	AISI 316 stainless steel
OR	Viton
Antiextrusion ring	PTFE
Check Valve	Acc. Inox AISI 316
Spring	Acc. Inox AISI 316
Threaded end-plate	Acc. Inox AISI 316
Handwheel	GD Al Si 12 - UNI 5706
Handwheel (mp)	ABS

example for ordering

Code	Type	Panel ring	Viton seal	Plastic handwheel
FT 2257/5	12	G	-	mp



dimensions

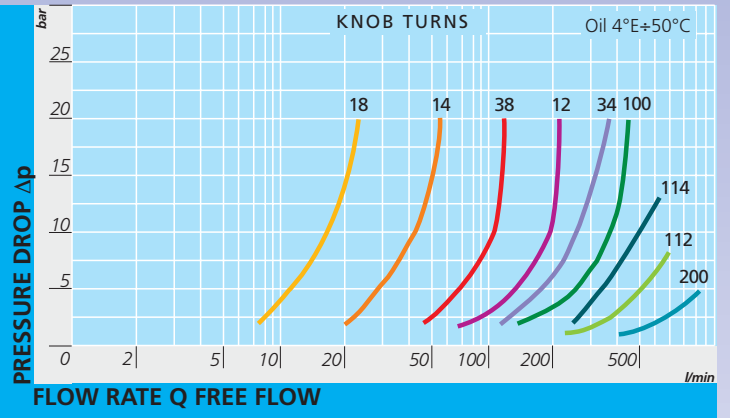
Type	A UNI 338	B	C	D	E	ϕF	$\phi F1$	G	H	CH	Weight kg
18	1/8"G	8,5	50	59	64	22	40	13,5	M17x1	16	0,130
14	1/4"G	12,5	66	71	78	27	50	17	M20x1	20	0,250
38	3/8"G	12,5	79	84	93	33	70	19,5	M25x1,5	25	0,500
12	1/2"G	15,5	94,5	97	107	38	80	21	M30x1,5	30	0,750
34	3/4"G	17	115	120,5	132,5	47	100	26,5	M40x1,5	40	1,600
100	1"G	20	138,5	151,5	167,5	58	120	35	M50x1,5	50	3,050
114	1 1/4"G	22	157	156,5	172,5	58	120	35	M50x1,5	55	3,750
112	1 1/2"G	24	190	167	181	58	120	35	M55x2	65	5,760
200	2"G	27	228	188	202	108	-	44	M65x2	75	10,000

technical data

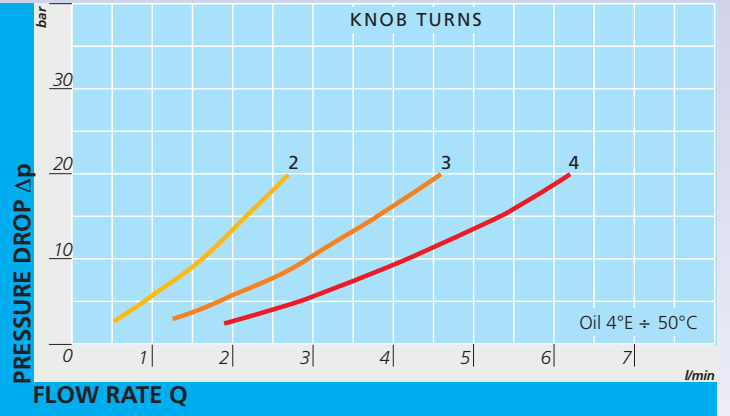
Type	Port section sq. cm ²	Working pressure bar	Min. burst. pressure bar	Working temp. °C	Filtration grade μm
18	0,12	400	1600	-20 / +130°C	25
14	0,19	400	1600	-20 / +130°C	25
38	0,39	400	1600	-20 / +130°C	25
12	0,68	400	1600	-20 / +130°C	25
34	1,13	400	1600	-20 / +130°C	25
100	2,09	320	1300	-20 / +130°C	25
114	2,09	320	1300	-20 / +130°C	25
112	3,14	320	1300	-20 / +130°C	25
200	4,91	320	1300	-20 / +130°C	25



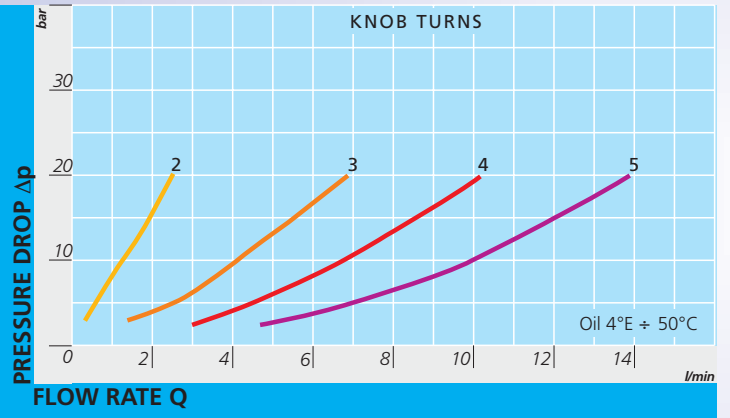
FT 2257/5



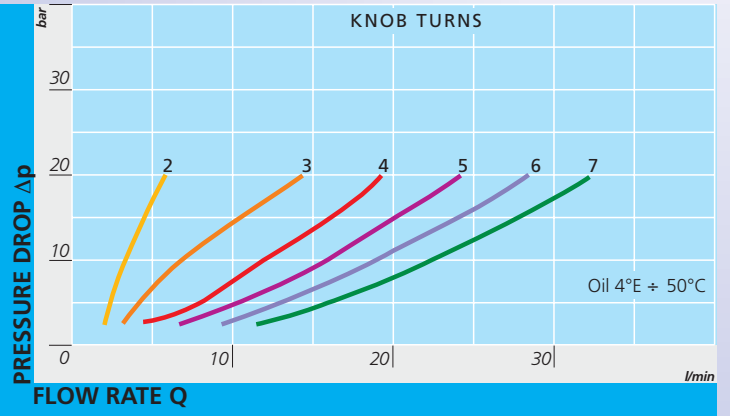
FT 2257/5-18



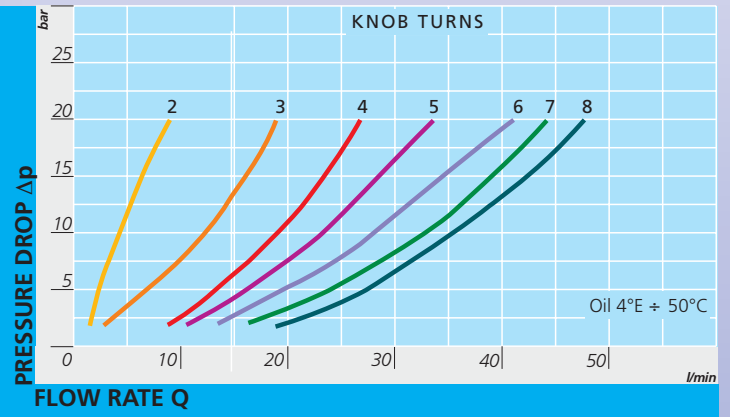
FT 257/5-14



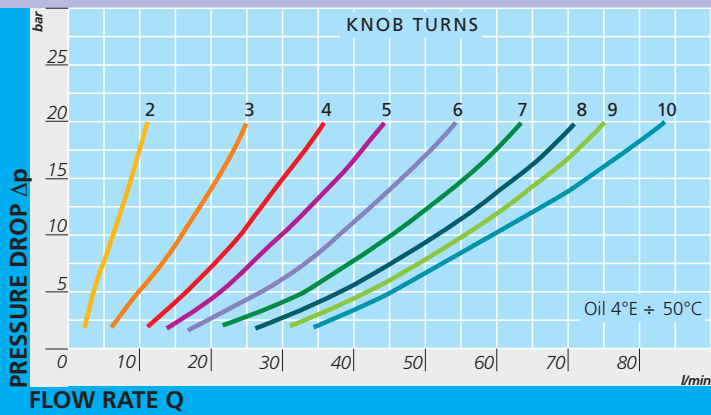
FT 257/5 - 38



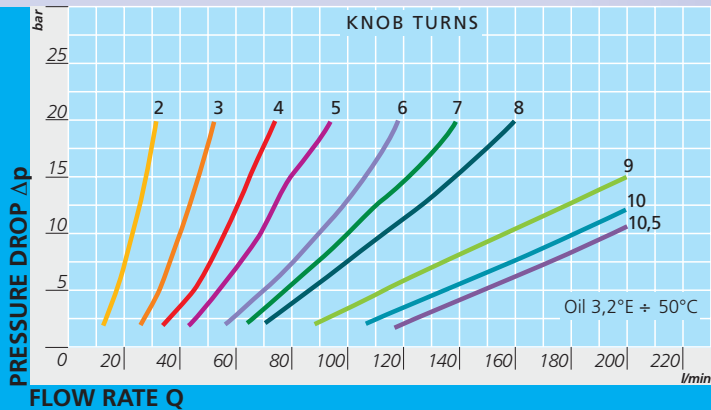
FT 2257/5 - 12



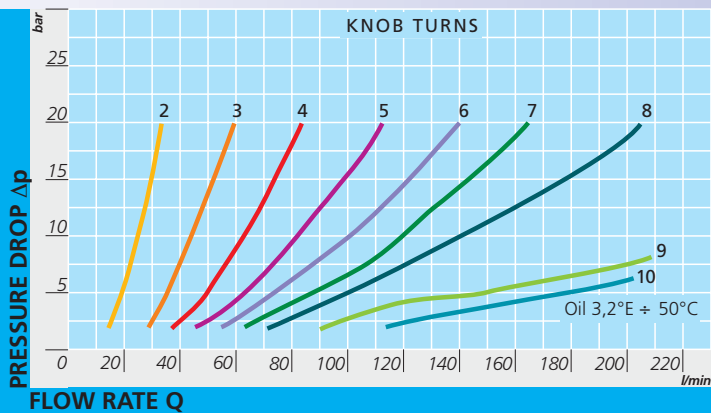
FT 2257/5 -84



FT 2257/5 -114



FT 257/5 -112



FT 2257/5 -200

