



VERTICAL STACKING ON VALVES KVM WITH STANDARD SANDWICH VALVES TO ISO 4401

- NG 6
- Up to 350 bar [5076 PSI]
- Up to 40l/min [10.57 GPM]

- Use standard components for vertical stacking.
- Threaded connections to ISO 9974 or ISO 1179.
- Possibility of stacking one or two standard components.



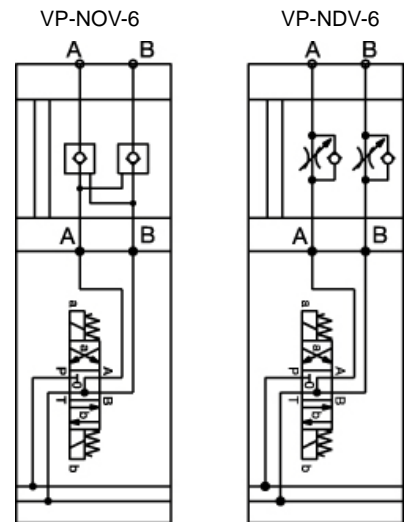
KVM-P-4/3-5KO-6 and VP-NOV-6 for stacking

Description

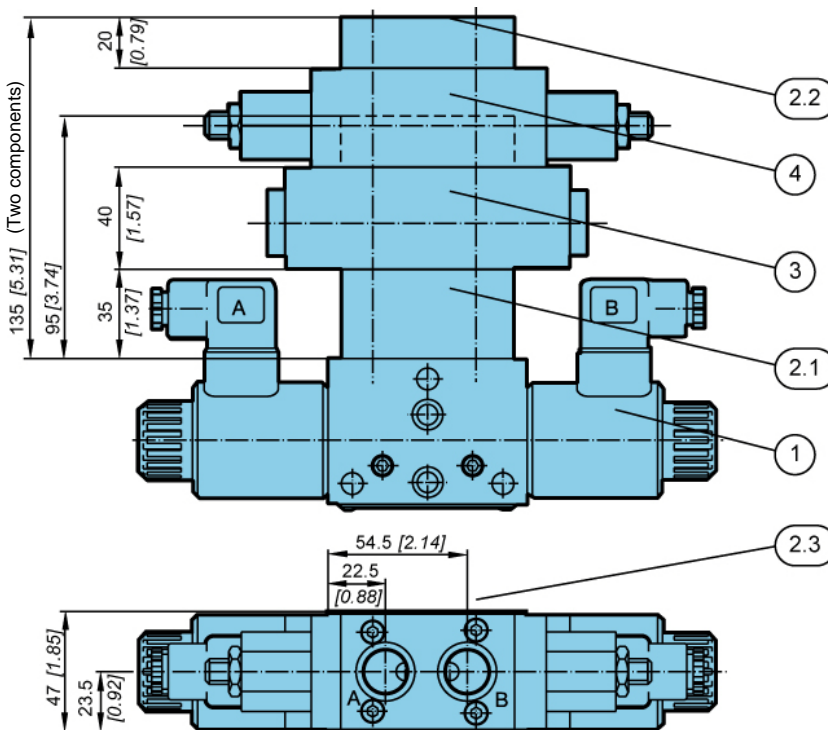
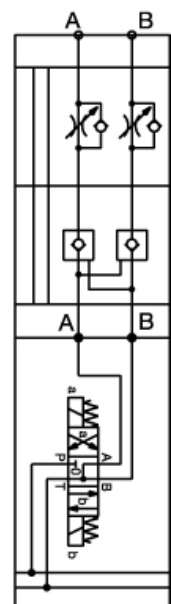
1. Bankable directional valve KVM-6
2. STACK-KVM-6 consist of:
 - 2.1 Adapter plate and two O-rings 18,77 x 1,78
 - 2.2 End plate and two O-rings 9,25 x 1,78
 - 2.3 Fixing screws M5x100 ISO 4762-10.9 (for one stacking component) or M5x140 ISO 4762-10.9 (for two stacking components)
3. First stacking component (standard VP-NOV-6 or VP-NDV-6)
4. Second stacking component (standard VP-NDV-6)

Hydraulic symbol

One standard component



Two standard components



Mtorque = max. 9Nm [79.6 in.lbf]

Mechanically operated

Hydraulically operated

Electrically operated



Model code

S T A C K - **K V M** - **6** - - - - *

Number of stacking components

One standard component

N1

Two standard components

N2

Threaded connections

G3/8 (ISO 1179)

3/8

M18 x 1,5 (ISO 9974)

No designation

Seal type

NBR seals for mineral oil HL, HLP to DIN 51524

No designation

FPM seals for HETG, HEES, HEPG to VDMA 24568 and ISO 15380

E

Special requirements to be briefly specified