

+ VU

2-WAY HIGH PRESSURE BALL VALVES



CARBON STEEL

- Type: check valve VU
- Body: exagone
- Material: 1,0737/1,4749
- Ball seats: from 1/4 to 2"
- Operating pressure: up to PN500
- Temp range: -20°C to +100°C depending on seal material selected



VU	G 1/2	CS	
Type and way of valve	GAS DIN/ISO 228 BSP	NPT ANSI/ASME B1.20.1	Material
VU check valves	G 1/4 G 3/8 G 1/2 G 3/4 G 1 G 1 1/4 G 1 1/2 G 2	N 1/4 N 3/8 N 1/2 N 3/4 N 1 N 1 1/4 N 1 1/2 N 2	CS carbon steel

STAINLESS STEEL

- Type: check valve VU
- Body: exagone
- Material: 1.4404/1.4404
- Ball seats: from 1/4 to 2"
- Operating pressure: up to PN500
- Temp range: -60°C to +230°C depending on seal material selected



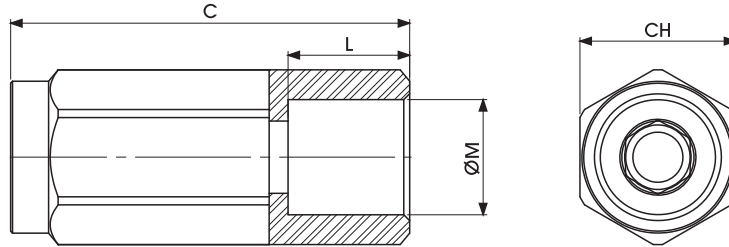
VU	G 1/2	SS	
Type and way of valve	GAS DIN/ISO 228 BSP	NPT ANSI/ASME B1.20.1	Material
VU check valves	G 1/4 G 3/8 G 1/2 G 3/4 G 1 G 1 1/4 G 1 1/2 G 2	N 1/4 N 3/8 N 1/2 N 3/4 N 1 N 1 1/4 N 1 1/2 N 2	SS stainless steel





2-WAY HIGH PRESSURE BALL VALVES

Specialist in Ball Valves

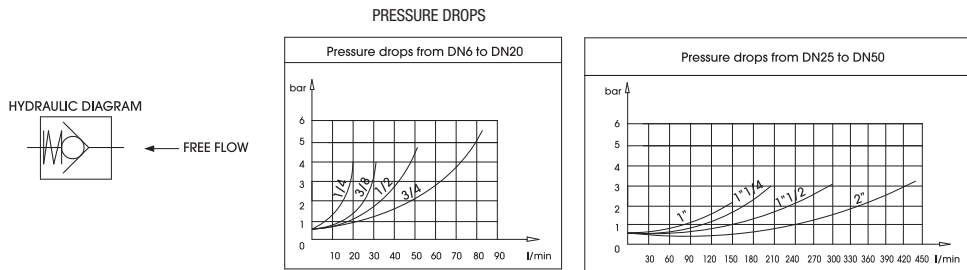


VU DIN ISO 228 BSP GAS

Standard

CARBON STEEL

TYPE	PN	DN	MAX FLOW L/m	CRACKING PRESSURE	C	L	ØM	CH	KG	ITEM CODE
VU G 1/4	40 MPa	6	15	0.4/0.7 BAR	62	15.5	G 1/4	19	0,11	GC2GGT140110000
VU G 3/8	40 MPa	10	30	0.4/0.7 BAR	68	15.5	G 3/8	24	0,2	GC2GGT250110000
VU G 1/2	40 MPa	13	50	0.4/0.7 BAR	77	17	G 1/2	30	0,35	GC2GGT350110000
VU G 3/4	40 MPa	20	90	0.4/0.7 BAR	88	21	G 3/4	36	0,53	GC2GGT440110000
VU G 1	35 MPa	25	150	0.4/0.7 BAR	105	24	G 1	41	0,75	GC2GGT530110000
VU G 1 1/4	35 MPa	32	200	0.4/0.7 BAR	135	24	G 1 1/4	55	1,81	GC2GGT630110000
VU G 1 1/2	35 MPa	40	300	0.4/0.7 BAR	145	24	G 1 1/2	60	2,2	GC2GGT730110000
VU G 2	25 MPa	50	430	0.4/0.7 BAR	175	27	G 2	75	4,17	GC2GGT830110000

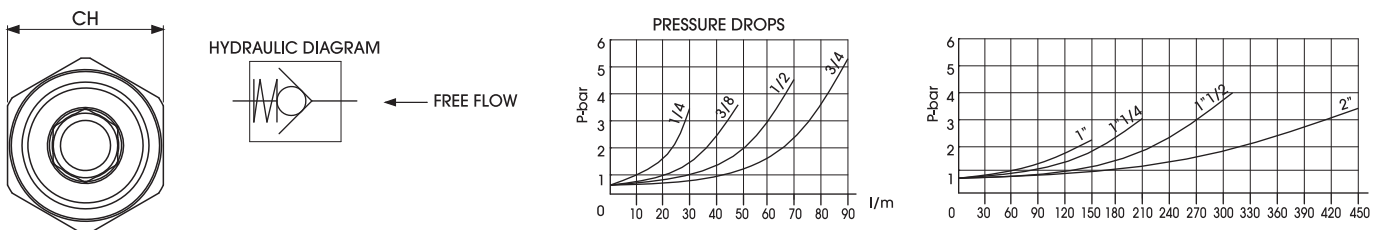


VU DIN ISO 228 BSP GAS

Standard

STAINLESS STEEL

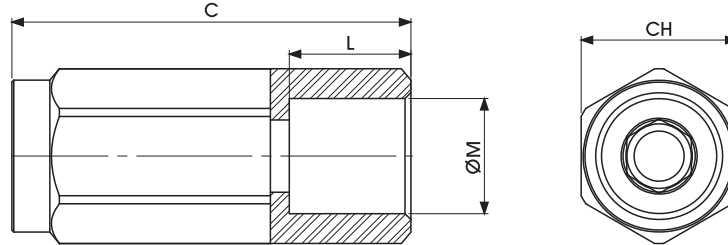
TYPE	PN	DN	MAX FLOW L/m	CV GPM	CRACKING PRESSURE	C	L	ØM	CH	KG	ITEM CODE
VU G 1/4	50 MPa	6	30	8	0.4/0.7 BAR	62	15.5	G 1/4	22	0,17	GC2GGT150440000
VU G 3/8	50 MPa	10	48	15	0.4/0.7 BAR	68	15.5	G 3/8	27	0,28	GC2GGT250440000
VU G 1/2	50 MPa	13	70	20	0.4/0.7 BAR	77	17	G 1/2	32	0,40	GC2GGT350440000
VU G 3/4	40 MPa	20	95	25	0.4/0.7 BAR	88	21	G 3/4	36	0,54	GC2GGT440440000
VU G 1	35 MPa	25	150	40	0.4/0.7 BAR	105	24	G 1	46	1,08	GC2GGT530440000
VU G 1 1/4	35 MPa	32	210	55	1 BAR	135	24	G 1 1/4	55	1,90	GC2GGT630440000
VU G 1 1/2	35 MPa	40	320	85	1 BAR	145	24	G 1 1/2	65	2,95	GC2GGT730440000
VU G 2	35 MPa	50	460	125	1 BAR	160	27	G 2	75	3,90	GC2GGT830440000



+ VU

2-WAY HIGH PRESSURE BALL VALVES

www.gemels.it



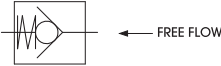
VU ANSI/ASME B1.20.1 NPT

Standard

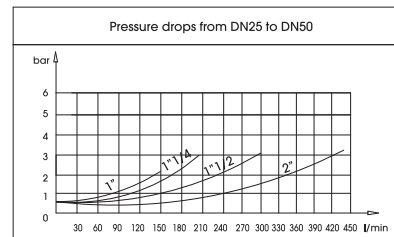
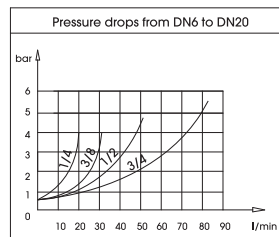
CARBON STEEL

TYPE	PN	DN	MAX FLOW L/m	CRACKING PRESSURE	C	L	ØM	CH	KG	ITEM CODE
VU N 1/4	40 MPa	6	15	0.4/0.7 BAR	62	15.5	N 1/4	19	0,11	GC2NNT140110000
VU N 3/8	40 MPa	10	30	0.4/0.7 BAR	68	15.5	N 3/8	24	0,2	GC2NNT250110000
VU N 1/2	40 MPa	13	50	0.4/0.7 BAR	77	17	N 1/2	30	0,35	GC2NNT350110000
VU N 3/4	40 MPa	20	90	0.4/0.7 BAR	88	21	N 3/4	36	0,53	GC2NNT440110000
VU N 1	35 MPa	25	150	0.4/0.7 BAR	105	24	N 1	41	0,75	GC2NNT530110000
VU N 1 1/4	35 MPa	32	200	0.4/0.7 BAR	135	24	N 1 1/4	55	1,81	GC2NNT630110000
VU N 1 1/2	35 MPa	40	300	0.4/0.7 BAR	145	24	N 1 1/2	60	2,2	GC2NNT730110000
VU N 2	25 MPa	50	430	0.4/0.7 BAR	175	27	N 2	75	4,17	GC2NNT830110000

HYDRAULIC DIAGRAM



PRESSURE DROPS

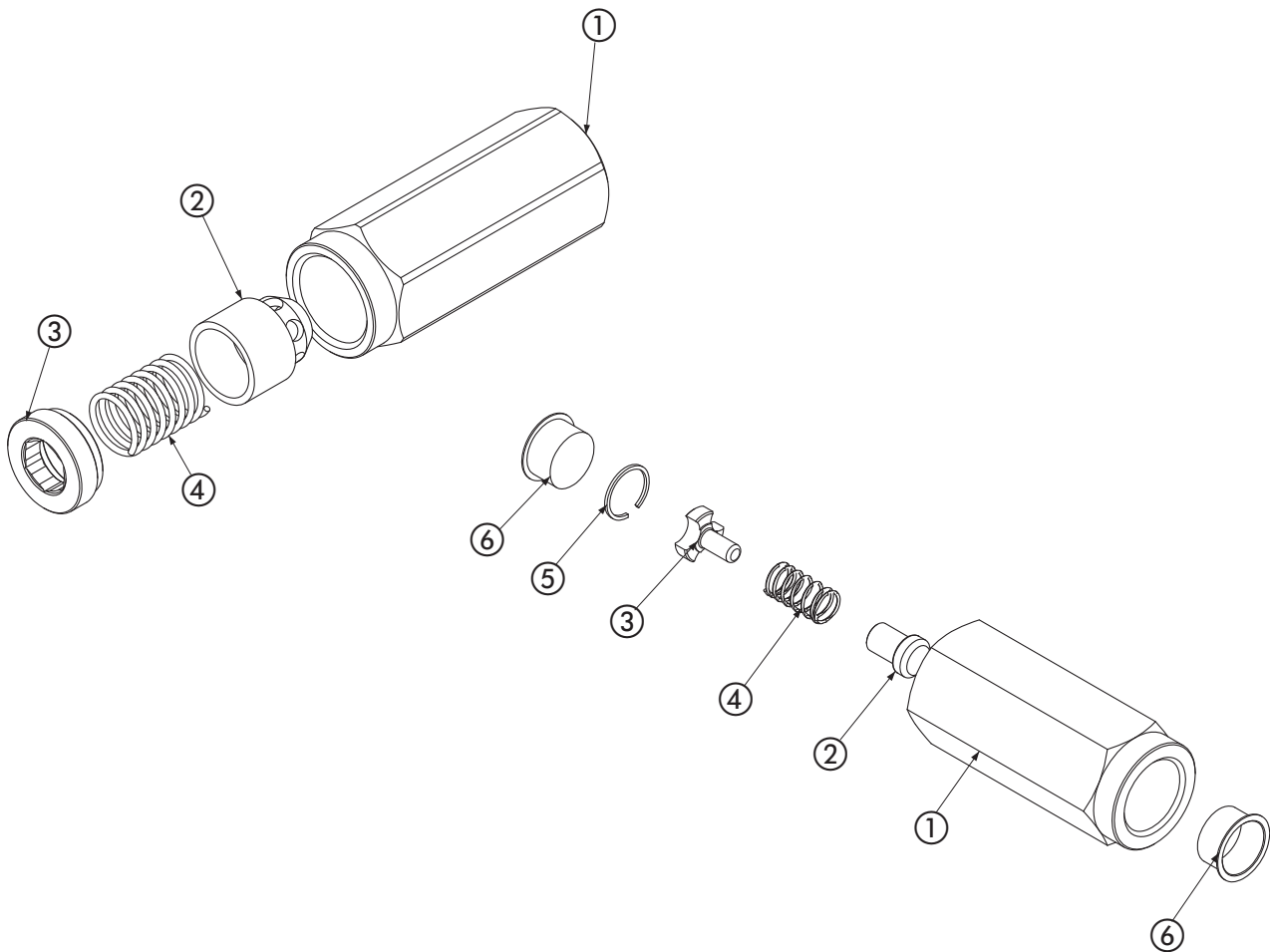


VU ANSI/ASME B1.20.1 NPT

Standard

STAINLESS STEEL

TYPE	PN	DN	MAX FLOW L/m	CV GPM	CRACKING PRESSURE	C	L	ØM	CH	KG	ITEM CODE
VU N 1/4	50 MPa	6	30	8	0.4/0.7 BAR	62	15.5	N 1/4	22	0,17	GC2NNT150440000
VU N 3/8	50 MPa	10	48	15	0.4/0.7 BAR	68	15.5	N 3/8	27	0,28	GC2NNT250440000
VU N 1/2	50 MPa	13	70	20	0.4/0.7 BAR	77	17	N 1/2	32	0,40	GC2NNT350440000
VU N 3/4	40 MPa	20	95	25	0.4/0.7 BAR	88	21	N 3/4	36	0,54	GC2NNT440440000
VU N 1	35 MPa	25	150	40	0.4/0.7 BAR	105	24	N 1	46	1,08	GC2NNT530440000
VU N 1 1/4	35 MPa	32	210	55	1 BAR	135	24	N 1 1/4	55	1,90	GC2NNT630440000
VU N 1 1/2	35 MPa	40	320	85	1 BAR	145	24	N 1 1/2	65	2,95	GC2NNT730440000
VU N 2	35 MPa	50	460	125	1 BAR	160	27	N 2	75	3,90	GC2NNT830440000



Carbon steel

Pos	Description	Material	Q.tà
1	Body	1,0737	1
2	Poppet	1,4749	1
3	Ring	1,0737	1
4	Spring	1,0116	1

- On request**
- Special threads
 - Pressure class up to PN500
 - Spring closed: 1BAR - 3BAR - 5BAR - 8BAR

For further special requests please consult our technical/commercial service

Stainless steel

Pos	Description	Material	Q.tà
1	Body	1,4404	1
2	Poppet	1,4404	1
3	Spring ring	1,4404	1
4	Spring	1,4310	1
5	Seeger	X 35 Cr Mo 17	1
6	Caps	PVC	2

- On request**
- Special threads
 - Pressure class up to PN500
 - Spring closed: 1BAR - 3BAR - 5BAR - 8BAR